

Introduction

The publication series Planning Statistics was established in 1986. Its main objective is to monitor the implementation of the Local Government (Planning and Development) Acts 1963 – 1999 and the Planning and Development Acts 2000 – 2002. Most of the statistics relate to development control procedures (planning applications, appeals, fees, enforcement, etc.) and provide an up-to-date picture of the current situation as well as the trends emerging in relation to the operation of the physical planning system as a whole.

The current edition takes 1997 as its starting point and refers the reader to earlier editions for information prior to that date. Table 1, which gives overall trends from 1991 to date, has been retained.

The Planning Statistics Quarterly has been available since the beginning of 1990. It provides a breakdown of basic information on planning applications, decisions, refusals and deferrals by individual authority. Since 1990, information (in particular, Tables 2 and 3) is presented in the Annual Statistics by Area, an Area being a county authority and all other authorities within that county but excluding Borough Councils.

Most of the figures presented here are based on information submitted by planning authorities either quarterly or annually to the Department of the Environment, Heritage and Local Government. The accuracy of the figures is dependent on the accuracy of the data submitted by each planning authority.

In calculating 'number of permissions', 'number of refusals', 'number of enforcement cases' and 'number of convictions' it should be borne in mind that the total number of refusals for one year could refer to applications from the previous year; similarly a period of more than one year could elapse between the initiation of an enforcement order and a possible conviction.

The tables have been grouped in four sections. The first two sections, 'Planning Applications' and 'Enforcement' deal with the development control system. The third section, 'Fees and Administration', covers the administrative aspects of the planning system, including staffing and resources, while the final section provides statistics on the use of various procedures in the Planning Acts.

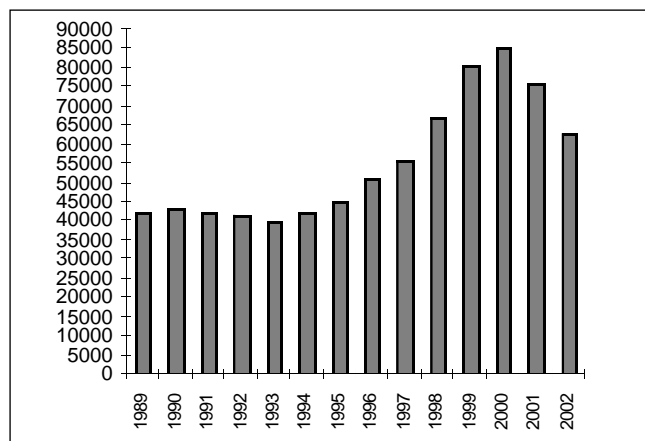
A short section of text precedes each table or set of tables. Deficiencies in the statistics that may affect the validity or interpretation are pointed out in these paragraphs. In addition, some interpretation of the data is provided where relevant. However, the main purpose of this publication is to provide a set of basic planning statistics.

Planning and Development Act 2000

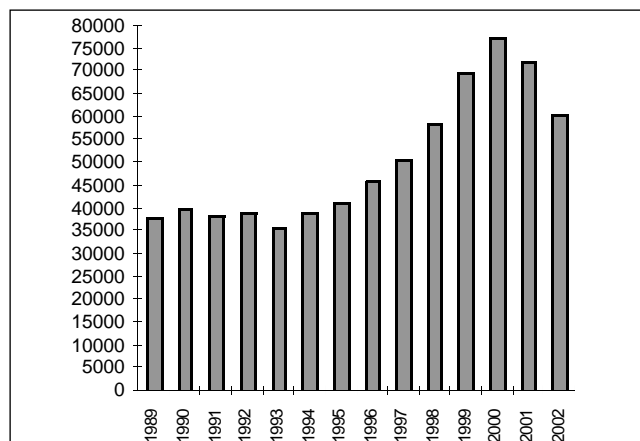
In August 2000, the Planning and Development Act, 2000 was enacted following detailed consideration of its provisions by the Oireachtas. This Act, which revises, extends and consolidates the legislative basis for the Irish planning system, introduced many significant changes and initiatives designed to introduce a sustainable development ethos into the Irish planning system, increase the efficiency of the system and ensure a strategic approach to land-use planning in Ireland.

The Act was brought into force in stages. Some priority provisions commenced by the end of 2000 including those on the supply of housing, on strategic development zones and on the transfer of the Minister's statutory functions to An Bord Pleanála. By 11 March, 2002 all parts of the Planning and Development Act, 2000 commenced.

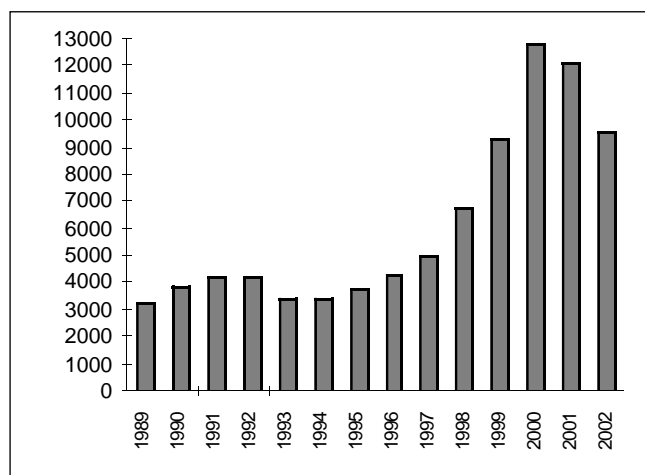
Figure 1: Planning Applications, Decisions, Refusals & Appeals



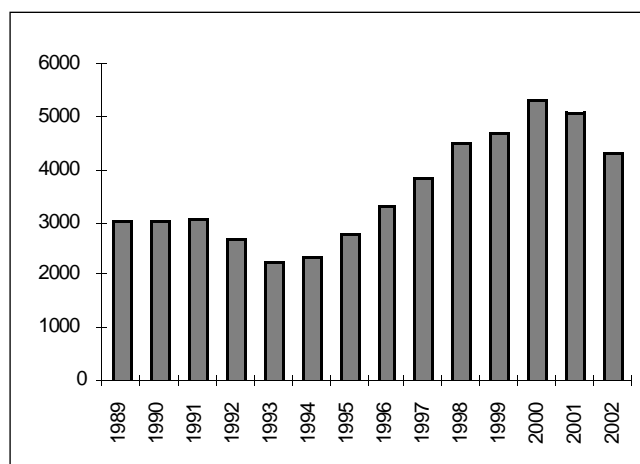
APPLICATIONS



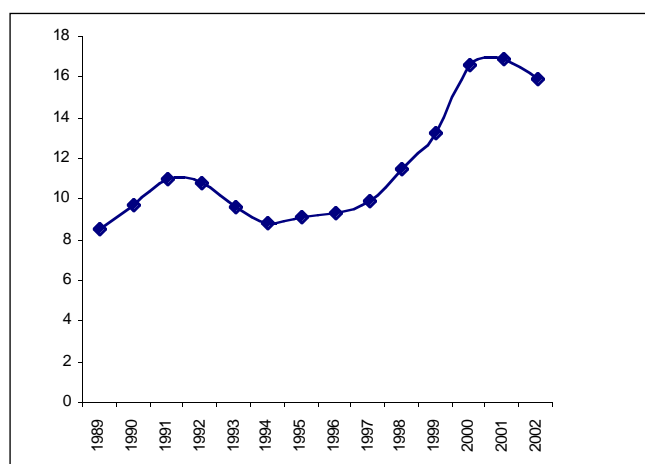
DECISIONS



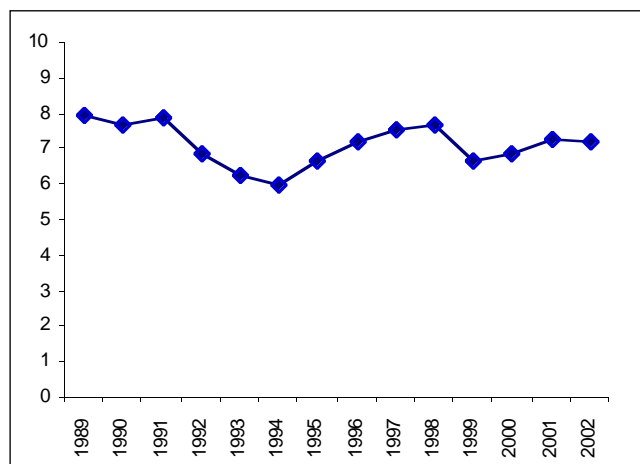
REFUSALS



APPEALS



REFUSAL RATE
(refusals as % of decisions)



APPEAL RATE
(appeals as % of decisions)

I Planning Applications

Tables 1, 2, 3 and 4

In the ten year period from 1991 to 2001 the number of planning applications made to local authorities increased by approximately 80%. The number of planning applications in 2002 was 62,810 which represented a reduction of 17% compared with 2001.

In the 1980s and early 1990s up to 1993 the applications for planning permission fluctuated between thirty three thousand and just over forty thousand. Between 1994 and 2000 there was a constant rise in the figures giving a cumulative increase of over 100% in the seven year period.

Table 4 gives the number of refusals and the 'refusal rates'. The percentage of planning decisions that consist of a refusal (the refusal rate) had shown a consistent decline from 15.1% in 1981 to 7.4 % in 1986. Between 1987 and 1997, apart from 1988, the rate fluctuated between 8 % and 11%. The rate for 2000 was 16.6% and rose slightly to 16.9 % in 2001. The refusal rate fell to 15.9 % in 2002.

The refusal rate is not an indicator of the proportion of applications that end up as refusals, nor should it be regarded as an indicator of the 'efficiency' or 'commitment' of any individual planning authority. Higher refusal rates might be expected, for example, in areas of high amenity value or in areas under intensive pressures for speculative development.

Some of the above trends are graphically presented in Figure 1.

Table 1: Planning Applications, Decisions and Refusals

Year	Planning applications	Planning decisions	Refusals	Refusal rate ¹
1991	41 996	38 450	4 234	11.0
1992	41 711	38 785	4 197	10.8
1993	39 486	35 539	3 428	9.6
1994	42 318	38 849	3 456	8.9
1995	45 261	41 282	3 773	9.1
1996	50 732	46 015	4 278	9.3
1997	55 929	50 427	5 008	9.9
1998	67 075	58 634	6 730	11.5
1999	80 261	69 869	9 274	13.3
2000	85 300	77 295	12 810	16.6
2001	75 786	71 890	12 128	16.9
2002	62 810	60 376	9 577	15.9

Note 1: Number of decisions to refuse permission as a percentage of the total number of decisions

Table 2: Planning Applications by area

Area	1997	1998	1999	2000	2001	2002	EIS ¹ (%) Change '01 to '02
Carlow	637	810	985	1 004	912	690	0 (32.2)
Cavan	991	1 293	1 696	2 311	1 835	1 573	8 (16.7)
Clare	1 957	2 342	2 842	2 954	2 449	2 536	6 3.4
Cork	5 572	6 227	7 717	11 558	8 152	5 806	30 (40.4)
Donegal	2 831	3 652	5 520	5 930	4 744	4 658	6 (1.8)
Dun Laoghaire/Rathdown	1 851	2 176	2 335	2 317	1 965	1 498	10 (31.2)
Fingal	1 815	2 088	2 520	2 284	2 201	1 900	13 (15.8)
Galway	3 833	4 886	5 588	6 195	5 549	5 241	4 (5.9)
Kerry	3 095	3 638	4 117	4 710	4 473	3 657	9 (22.3)
Kildare	2 060	2 574	2 618	2 768	2 548	1 900	13 (34.1)
Kilkenny	1 355	1 531	2 079	2 361	1 875	1 449	4 (29.4)
Laois	812	1 153	1 504	1 337	1 083	928	0 (16.7)
Leitrim	575	729	922	1 246	1 009	703	3 (43.5)
Limerick	1 899	2 133	2 639	2 924	2 629	1 980	6 (32.8)
Longford	498	557	813	940	955	650	0 (46.9)
Louth	1 592	1 897	2 395	2 259	1 864	1 618	5 (15.2)
Mayo	2 679	3 377	3 618	3 605	3 296	2 729	11 (20.8)
Meath	2 021	2 442	2 767	2 851	2 521	1 983	17 (27.1)
Monaghan	1 040	1 083	1 315	1 593	1 326	1 172	5 (13.1)
Offaly	979	1 195	1 678	1 558	1 374	1 229	5 (11.8)
Roscommon	986	1 258	1 479	2 023	1 772	1 366	5 (29.7)
Sligo	946	1 172	1 309	1 483	1 257	1 003	2 (25.3)
South Dublin	1 198	1 651	1 758	1 681	1 485	1 094	10 (35.7)
Tipperary NR	1 028	1 216	1 609	1 731	1 505	1 490	2 (1.0)
Tipperary SR	1 146	1 331	1 707	1 701	1 558	1 409	6 (10.6)
Waterford	1 053	1 302	1 496	1 650	1 551	1 275	2 (21.6)
Westmeath	1 339	1 532	1 895	1 867	1 467	1 121	2 (30.9)
Wexford	2 451	3 146	4 097	4 820	4 021	3 275	5 (22.8)
Wicklow	1 864	2 156	2 295	2 215	2 007	1 607	5 (24.9)
Sub(total)	50 106	60 547	73 313	81 876	69 383	57 540	194 (20.6)
Cork	891	982	1 055	1 071	928	805	3 (15.3)
Dublin	3 248	3 782	4 064	4 562	3 864	3 108	12 (24.3)
Galway	855	912	864	823	774	672	0 (15.2)
Limerick	431	463	452	446	422	334	1 (26.3)
Waterford	401	389	513	522	415	351	0 (18.2)
Sub(total)	5 826	6 528	6 948	7 424	6 403	5 270	16 (21.5)
Total	55 929	67 075	80 261	89 300	75 786	62 810	210 (20.7)

¹ Number of Planning Applications accompanied by an Environmental Impact Statement in 2002

Table 3: Planning Decisions by Area

Area	1997	1998	1999	2000	2001	2002	(%) Change '01 to '02
Carlow	591	680	862	939	922	716	(28.8)
Cavan	939	1 224	1482	2 087	2 054	1 639	(25.3)
Clare	1 658	1 914	2 356	2 675	2 352	2 000	(17.6)
Cork	5 113	5 391	6 736	7 297	7 075	6 041	(17.1)
Donegal	2 476	3 238	4 584	5 393	4 371	4 431	1.4
Dun Laoghaire/Rathdown	1 777	2 073	2 169	2 263	1 963	1 561	(25.8)
Fingal	1 673	2 003	2 382	2 211	2 124	1 805	(17.7)
Galway	3 371	4 471	4 750	5 351	4 844	3 372	(43.7)
Kerry	2 921	3 298	3 756	4 288	4 667	3 860	(20.9)
Kildare	1 727	1 917	2 264	2 451	2 257	1 946	(16.0)
Kilkenny	1 303	1 336	1 753	2 227	1 771	1 456	(21.6)
Laois	759	991	1 304	1 266	950	940	(1.1)
Leitrim	492	577	844	1 016	939	742	(26.5)
Limerick	1 703	1 859	2 327	2 373	2 493	2 092	(19.2)
Longford	482	476	637	846	853	686	(24.3)
Louth	1 425	1 552	1 941	1 972	2 169	1 874	(15.7)
Mayo	2 247	2 721	2 895	3 452	3 260	2 604	(25.2)
Meath	1 711	2 168	2 397	2 566	2 622	2 120	(23.7)
Monaghan	936	914	1 112	1 383	1 297	1 182	(9.7)
Offaly	851	963	1 412	1 422	1 343	1 207	(11.3)
Roscommon	846	1 047	1 250	1 673	1 564	1 438	(8.8)
Sligo	787	1 003	1 125	1 235	1 076	1 141	5.7
South Dublin	1 409	1 509	1 638	1 481	1 442	1 097	(31.4)
Tipperary NR	987	1 160	1 427	1 451	1 310	1 208	(8.4)
Tipperary SR	1 053	1 200	1 536	1 580	1 445	1 233	(17.2)
Waterford	978	1 184	1 319	1 471	1 480	1 323	(11.9)
Westmeath	1 192	1 354	1 627	1 692	1 523	1 147	(32.8)
Wexford	2 104	2 798	3 697	4 420	3 897	3 086	(26.3)
Wicklow	1 586	1 802	1 932	1 943	1 718	1 347	(27.5)
Sub(total)	45 097	52 823	63 514	70 424	65 781	55 294	(19.0)
Cork	808	911	970	1 004	859	783	(9.7)
Dublin	3 075	3 429	3 825	4 190	3 658	2 989	(22.4)
Galway	658	698	660	809	755	634	(19.1)
Limerick	406	397	448	410	414	334	(24.0)
Waterford	383	376	452	483	423	342	(23.7)
Sub(total)	5 330	5 811	6 355	6 896	6 109	5 082	(20.2)
Total	50 427	58 634	69 869	77 320	71 890	60 376	(19.1)

Table 4: Refusals and Refusal Rate by Area

Area	2000		2001		2002		Rate Change from 2001 to 2002
	Refusals	Rate	Refusals	Rate	Refusals	Rate	
Carlow	158	16.8	119	12.9	86	12.0	(0.9)
Cavan	230	11.0	278	13.5	152	9.3	(4.2)
Clare	454	17.0	329	14.0	370	18.5	4.5
Cork	1 378	18.9	1 503	21.2	1065	17.6	(3.6)
Donegal	929	17.2	614	14.0	652	14.7	0.7
Dun Laoghaire/Rathdown	344	15.2	320	16.3	246	15.8	(0.5)
Fingal	529	23.9	485	22.8	396	21.9	(0.9)
Galway	774	14.5	571	11.8	441	13.1	1.3
Kerry	817	19.1	934	20.0	690	17.9	(2.1)
Kildare	251	10.2	327	14.5	361	18.6	4.1
Kilkenny	442	19.8	370	20.9	262	18.0	(2.9)
Laois	258	20.4	233	24.5	134	14.3	(10.2)
Leitrim	86	8.5	89	9.5	100	13.5	4.0
Limerick	266	11.2	234	9.4	277	13.2	3.8
Longford	162	19.1	130	15.2	81	11.8	(3.4)
Louth	330	16.7	428	19.7	393	21.0	1.3
Mayo	428	12.4	291	8.9	338	13.0	4.1
Meath	633	24.7	591	22.5	489	23.1	0.6
Monaghan	226	16.3	241	18.5	169	14.3	(4.2)
Offaly	274	19.3	306	22.7	258	21.4	(1.3)
Roscommon	180	10.8	235	15.0	60	4.2	(10.8)
Sligo	206	16.7	217	20.2	217	19.0	(1.2)
South Dublin	328	22.1	263	18.2	185	16.9	(1.3)
Tipperary NR	177	12.2	130	9.9	109	9.0	(0.9)
Tipperary SR	138	8.7	216	14.9	158	12.8	(2.1)
Waterford	141	9.6	170	11.5	146	11.0	(0.5)
Westmeath	336	19.9	280	18.4	213	18.6	0.2
Wexford	937	21.2	978	25.1	667	21.6	(3.5)
Wicklow	412	21.2	381	22.2	256	19.0	(3.2)
Sub-total	11 824	16.8	11 263	17.1	8 971	16.2	(0.9)
Cork	163	16.2	85	9.9	88	11.2	1.3
Dublin	636	15.2	571	15.6	393	13.1	(2.5)
Galway	107	13.2	82	10.9	83	13.1	2.2
Limerick	41	10.0	59	14.3	14	4.2	(10.1)
Waterford	39	8.1	68	16.1	28	8.2	(7.9)
Sub-total	986	14.3	865	14.2	606	11.9	(2.3)
Total	12 810	16.6	12 128	16.9	9 577	15.9	(1.0)

Tables 5, 6, 7 and 8

In 2002, 4,324 planning decisions were the subject of an appeal to An Bord Pleanála - a decrease of 16% over the previous year. The figure does not include reactivated appeals. A small number of appeals - approximately 1% of the total - were disposed of without a formal decision (withdrawn, invalid, etc.). In 2002 the number of formal decisions amounted to 4,276.

Table 8 (which is obtained in full from the annual report of An Bord Pleanála) shows the breakdown of appeal decisions in three categories: reversed, varied and confirmed. Slightly less than one in three appeals leads to a reversal of the local authority decision. This information is not available for individual authorities.

Table 5: Planning Decisions and Appeals¹

Year	Planning decisions	Appeals made	Appeal decisions	Appeals made as percentage of planning decisions
1991	38 450	3 050	2 511	7.9
1992	38 785	2 671	2 473	6.9
1993	35 539	2 249	2 033	6.3
1994	38 849	2 331	1 802	6.0
1995	41 282	2 777	2 064	6.7
1996	46 015	3 319	2 540	7.2
1997	50 427	3 845	2 902	7.6
1998	58 634	4 533	3 154	7.7
1999	69 869	4 706	3 697	6.7
2000	77 320	5 306	3 801	6.9
2001	71 890	5 219	3 829	7.3
2002	60 376	4 324	4 276	7.2

Note 1: Source - An Bord Pleanála

Table 6: Planning Decisions and Appeals in 2002 by Area

Area	Planning Decisions	Appeals Made	Appeals made as % of Planning Decisions
Carlow	716	41	5.7
Cavan	1 639	77	4.7
Clare	2 000	150	7.5
Cork	6 041	344	5.7
Donegal	4 431	170	3.8
Dun Laoghaire /Rathdown	1 561	296	19.0
Fingal	1 805	259	14.3
Galway	3 372	154	4.6
Kerry	3 860	194	5.0
Kildare	1 946	226	11.6
Kilkenny	1 456	76	5.2
Laois	940	45	4.8
Leitrim	742	52	7.0
Limerick	2 092	111	5.3
Longford	686	43	6.3
Louth	1 874	125	6.7
Mayo	2 604	177	6.8
Meath	2 120	132	6.2
Monaghan	1 182	44	3.7
Offaly	1 207	60	5.0
Roscommon	1 438	74	5.1
Sligo	1 141	63	5.5
South Dublin	1 097	167	15.2
Tipperary N.R.	1 208	50	4.1
Tipperary S.R.	1 233	79	6.4
Waterford	1 323	78	5.9
Westmeath	1 147	74	6.5
Wexford	3 086	114	3.7
Wicklow	1 347	171	12.7
Sub-total	55 294	3 646	6.6
Cork	783	94	12.0
Dublin	2 989	445	14.9
Galway	634	70	11.0
Limerick	334	35	10.5
Waterford	342	34	9.9
Sub-total	5 082	678	13.3
Total	60 376	4324	7.2

Table 7: Appeals Made by Area

Area	1997	1998	1999	2000	2001	2002
Carlow	29	38	49	59	49	41
Cavan	35	54	50	72	85	77
Clare	97	105	107	176	156	150
Cork	327	387	431	510	508	344
Donegal	91	124	203	177	169	170
Dun Laoghaire/Rathdown	264	309	334	376	377	296
Fingal	229	281	296	318	317	259
Galway	166	224	197	191	185	154
Kerry	193	179	188	230	228	194
Kildare	134	144	158	176	205	226
Kilkenny	79	79	85	98	99	76
Laois	34	50	80	84	63	45
Leitrim	19	31	35	33	40	52
Limerick	78	96	123	132	96	111
Longford	28	34	27	55	34	43
Louth	100	106	103	142	126	125
Mayo	135	161	162	175	134	177
Meath	117	156	135	136	186	132
Monaghan	39	44	36	58	54	44
Offaly	36	51	65	86	84	60
Roscommon	45	53	56	63	99	74
Sligo	38	42	54	51	70	63
South Dublin	154	191	190	214	192	167
Tipperary NR	51	81	106	77	75	50
Tipperary SR	43	53	63	81	110	79
Waterford	47	65	47	92	99	78
Westmeath	74	71	65	84	72	74
Wexford	89	116	135	136	163	114
Wicklow	192	226	218	228	222	171
Sub-total	2 973	3551	3798	4 310	4 297	3 646
Cork	88	118	93	128	109	94
Dublin	612	662	618	654	662	445
Galway	106	139	128	129	96	70
Limerick	35	31	40	43	24	35
Waterford	31	32	29	42	31	34
Sub-total	872	982	908	996	922	678
Total	3 845	4533	4706	5 306	5 219	4 324

Source: An Bord Pleanála

Table 8: Consistency of Planning Decisions in Appeal Cases (S26 of 1963 Act and S37 of 2000 Act)¹

Year	Decision of Planning Authority		
	Reversed	Varied	Confirmed
	%	%	%
1991	615 (24.5)	762 (30.3)	1 134 (45.2)
1992	598 (24.2)	676 (27.3)	1 199 (48.5)
1993	496 (24.4)	675 (33.2)	862 (42.4)
1994	418 (23.2)	652 (36.2)	732 (40.6)
1995	478 (23.2)	746 (36.1)	840 (40.7)
1996	582 (22.9)	915 (38.0)	1 043 (41.1)
1997	659 (22.9)	992 (34.5)	1 222 (42.5)
1998	664 (21.5)	1 143 (37.1)	1 276 (41.4)
1999	895 (24.6)	1 212 (33.3)	1 530 (42.1)
2000	1 010 (27.1)	1 170 (31.4)	1 546 (41.5)
2001	1 123 (29.3)	1 158 (30.3)	1 547 (40.4)
2002 ¹	1 395 (32.6)	1 434 (33.5)	1 447 (33.9)

Source: An Bord Pleanála

¹ S37 of 2000 Act applies from 11 March 2002 onwards.

Tables 9, 10, 11 and 12

Since 1997 applications for outline permission accounted for about one in ten of all applications. In the years 1998 to 2001 this figure increased to 12% in 1998, and to 15% in 1999 and 2000 respectively. In 2001 these applications remained at 13% of the total and decreased to 9% of this level during 2002. It should be noted that the use of outline applications is relatively frequent in some authorities while the average for the 5 County Borough Councils is 1.3%. The ratio of applications for approval to those for outline permissions is approximately 1:4.

Table 12 shows that the 'refusal rate' for outline permissions - at approximately 35% - is more than twice the average rate. The refusal rate for approvals is approximately one fifth of the average rate. It should also be noted that while outline permissions deferred are 12% of all deferrals (Table 13), approximately 45% of all outline applications are deferred.

Table 9: Planning Applications by Type of Application

Year	Type of Application			Total
	Outline Perm	Approval	Permission	
1997	5 877 (10.5)	1 431 (2.6)	48 261 (86.9)	55 929
1998	8 068 (12.0)	1 932 (2.9)	57 075 (85.1)	67 075
1999	12 206 (15.2)	2 494 (3.1)	65 561 (81.7)	80 261
2000	13 690 (15.3)	3 179 (3.6)	72 431 (81.1)	89 300
2001	9 857 (12.7)	2 957 (3.8)	64 972 (83.5)	77 786
2002	5 590 (8.6)	2 829 (4.3)	56 854 (87.1)	65 273

Table 10: Planning Applications by Area and by Type 2002

Area	Outline	%	Approval	%	Perm'sn	%	Total
Carlow	22	3.2	13	1.9	655	94.9	690
Cavan	160	9.4	77	4.5	1 462	86.1	1 699
Clare	262	11.7	190	8.5	1 794	79.9	2 246
Cork	693	11.1	185	3.0	5 386	86.0	6 264
Donegal	678	14.3	331	7.0	3 732	78.7	4 741
Dun Laoghaire/Rathdown	17	1.2	9	0.7	1 348	98.1	1 374
Fingal	39	2.0	23	1.2	1 868	96.8	1 930
Galway	763	18.7	227	5.6	3 086	75.7	4 076
Kerry	665	17.4	397	10.4	2 751	72.1	3 813
Kildare	38	1.4	8	0.3	2 629	98.3	2 675
Kilkenny	96	6.2	69	4.5	1 378	89.3	1 543
Laois	69	7.6	34	3.7	808	88.7	911
Leitrim	82	11.5	62	8.7	570	79.8	714
Limerick	226	10.8	116	5.6	1 741	83.6	2 083
Longford	50	7.3	41	6.0	590	86.6	681
Louth	170	9.8	126	7.3	1 436	82.9	1 732
Mayo	242	8.4	150	5.2	2 496	86.4	2 888
Meath	26	1.0	15	0.6	2 444	98.4	2 485
Monaghan	122	10.0	9	0.7	1 085	89.2	1 216
Offaly	96	7.7	76	6.1	1 072	86.2	1 244
Roscommon	192	13.6	102	7.2	1 122	79.2	1 416
Sligo	69	6.7	21	2.0	941	91.3	1 031
South Dublin	33	2.5	8	0.6	1 284	96.9	1 325
Tipperary NR	208	15.5	110	8.2	1 020	76.2	1 338
Tipperary SR	89	6.9	64	5.0	1 129	88.1	1 282
Waterford	150	11.5	96	7.4	1 057	81.1	1 303
Westmeath	60	4.5	54	4.1	1 206	91.4	1 320
Wexford	130	3.9	194	5.8	3 005	90.3	3 329
Wicklow	57	3.6	2	0.1	1 515	96.3	1 574
Sub-total	5 504	9.3	2 809	4.8	50 610	85.9	58 923
Cork	13	1.6	3	0.4	815	98.1	831
Dublin	54	1.3	14	0.3	3 968	98.3	4 036
Galway	10	1.3	1	0.1	737	98.5	748
Limerick	6	1.7	0	0.0	356	98.3	362
Waterford	3	0.8	2	0.5	368	98.7	373
Subtotal	86	1.4	20	0.3	6 244	98.3	6 350
Total	5 590	8.6	2 829	4.3	56 854	87.1	65 273

Table 11: Planning Decisions by Type of Application

Year	Type of Application		Approval	Permission	Total		
	Outline Permission						
1991	3 842	(10.0)	664	(1.7)	33 942	(88.3)	38 448
1992	3 697	(9.5)	742	(1.9)	34 346	(88.6)	38 785
1993	3 299	(9.3)	681	(1.9)	31 559	(88.8)	35 539
1994	3 325	(8.6)	895	(2.3)	34 629	(89.1)	38 849
1995	3 539	(8.6)	942	(2.3)	36 801	(89.1)	41 282
1996	3 876	(8.4)	1 085	(2.4)	41 058	(89.2)	46 015
1997	4 741	(9.4)	1 295	(2.6)	44 390	(88.0)	50 426
1998	6 337	(10.8)	1 691	(2.9)	50 606	(86.3)	58 634
1999	9 512	(13.6)	2 190	(3.1)	58 167	(83.3)	69 869
2000	11 829	(15.3)	2 759	(3.7)	62 707	(81.1)	77 295
2001	9 223	(12.8)	2 719	(3.8)	59 948	(83.4)	71 890
2002	5 749	(9.5)	2 533	(4.2)	52 094	(86.3)	60 376

Table 12: Refusals as a Percentage of Decisions by Type of Application

Year	Type of Application		Permission	All Types
	Outline Permission	Approval		
1991	29.6	2.7	9.1	11.0
1992	30.9	2.3	8.8	10.8
1993	27.7	2.2	7.9	9.6
1994	23.4	2.9	7.5	8.9
1995	24.3	2.3	7.9	9.1
1996	24.0	2.7	8.1	9.3
1997	24.9	2.6	8.5	9.9
1998	26.2	1.1	13.3	11.5
1999	28.5	1.7	11.2	13.3
2000	32.6	2.8	17.9	16.6
2001	33.7	2.4	14.9	16.9
2002	35.4	3.2	14.5	15.9

Tables 13, 14 and 15

A decision on a planning application must be made by the planning authority within a period of eight weeks. This period can be extended in two ways. The first occurs when a planning authority requests additional information (S34(8)(b) of the 2000 Act, Art. 33 of the 2001 Regulations). A second procedure, requiring the written consent of the applicant, allows the planning authority to extend the eight-week period. This provision was introduced in the 1976 Act (Table 15) and is now provided under S34(9) of the 2000 Act.

Table 14 gives the total figures for both procedures. Table 15 gives the figures for the extension provision introduced in the 1976 Act.

From 1990 onwards deferred applications referred to those arising from 'request for further information' and to cases dealt with under this second procedure. Deferrals arising from the applicant's consent increased as a percentage of total deferrals in 1997, 1998 and 2000: -

1997:20%;1998:24%; 1999: 23%; 2000: 30%; 2001: 26%; 2002:23%.

Table 13: Applications Deferred by Type of Application

Year	Type of Application ¹						Total
	Outline Permission		Approval		Permission		
		%		%		%	
1991	1 786	(14.4)	155	(1.3)	10 444	(84.3)	12 798
1992	1 890	(15.2)	169	(1.4)	10 399	(83.5)	12 458
1993	1 651	(15.7)	218	(2.1)	8 651	(82.2)	10 520
1994	1 536	(13.6)	266	(2.4)	9 471	(84.0)	11 273
1995	1 628	(13.2)	239	(1.9)	10 432	(84.8)	12 299
1996	1 972	(13.3)	307	(2.1)	12 559	(84.6)	14 838
1997	2 438	(14.7)	351	(2.1)	13 816	(83.2)	16 605
1998	3 193	(15.4)	447	(2.2)	17 061	(82.4)	20 701
1999	5 179	(18.9)	660	(2.4)	21 613	(78.7)	27 452
2000	5 934	(19.9)	889	(3.0)	22 993	(77.1)	29 816
2001	4 742	(15.5)	1 041	(3.4)	24 853	(81.1)	30 636
2002	2 527	(11.6)	813	(3.7)	18 512	(84.7)	21 852

Note 1: *The figures for the categories outline permission, approval and permission for 1991 underestimated the real figures and did not add up to the total number of deferred applications because of data missing for certain planning authorities.*

Table 14: Applications Deferred as Percentage of Applications ¹

Area	Deferred total 2001	Deferral rate	Deferred total 2002	Deferral rate	Change in rate '01 to '02
Carlow	247	27.1	187	27.1	0.0
Cavan	584	31.8	340	21.6	(10.2)
Clare	1 187	48.5	753	29.7	(18.8)
Cork	4 313	52.9	3 190	54.9	2.0
Donegal	1 949	41.1	1 278	27.4	(13.7)
Dun Laoghaire/Rathdown	398	20.3	252	16.8	(3.5)
Fingal	632	28.7	245	12.9	(15.8)
Galway	1 867	33.6	1 476	28.2	(5.4)
Kerry	1 521	34.0	1 009	27.6	(6.4)
Kildare	1 324	52.0	1 075	56.6	4.6
Kilkenny	917	48.9	591	40.8	(8.1)
Laois	598	55.2	363	39.1	(16.1)
Leitrim	413	40.9	341	48.5	7.6
Limerick	1 451	55.2	753	38.0	(17.2)
Longford	308	32.3	193	29.7	(2.6)
Louth	830	44.5	424	26.2	(18.3)
Mayo	1 210	36.7	1 183	43.3	6.6
Meath	650	25.8	716	36.1	10.3
Monaghan	683	51.5	518	44.2	(7.3)
Offaly	713	51.9	409	33.3	(18.6)
Roscommon	1 150	64.9	742	54.3	(10.6)
Sligo	280	22.3	380	37.9	15.6
South Dublin	633	42.6	303	27.7	(14.9)
Tipperary NR	615	40.9	528	35.4	(5.5)
Tipperary SR	518	33.2	242	17.2	(16.0)
Waterford	631	40.7	405	31.8	(8.9)
Westmeath	610	41.6	357	31.8	(9.8)
Wexford	1 970	49.0	1 665	50.8	1.8
Wicklow	787	39.2	526	32.7	(6.5)
Sub(total)	28 989	41.8	20 444	35.5	(6.3)
Cork	249	26.8	301	37.4	10.6
Dublin	947	24.5	771	24.8	0.3
Galway	90	11.6	128	19.0	7.4
Limerick	212	50.2	106	31.7	(18.5)
Waterford	149	35.9	102	29.1	(6.8)
Sub(total)	1 647	25.7	1 408	26.7	1.0
Total	30 636	40.4	21 852	34.8	(5.6)

Note 1: See text in introduction to table. This table should be read in conjunction with the following Table 15. The data in Table 15 are incorporated in the figures in this table.

Table 15: Applications where Consideration Time has been Extended under S26(4A) of 1963 Act as amended or S34(9) of 2000 Act¹

Area	1997	1998	1999	2000	2001	2002
Carlow	2	4	18	33	67	63
Cavan	6	5	16	26	52	63
Clare	115	134	214	406	539	265
Cork	489	417	606	48	773	780
Donegal	110	173	179	201	221	204
Dun Laoghaire/Rathdown	54	49	27	32	8	18
Fingal	333	132	708	591	632	19
Galway	255	339	505	690	644	654
Kerry	467	74	221	502	742	483
Kildare	227	541	856	1 932	691	371
Kilkenny	80	87	189	153	219	117
Laois	24	11	28	15	26	9
Leitrim	2	4	6	24	29	19
Limerick	32	74	130	0	126	104
Longford	12	14	6	0	39	17
Louth	89	145	201	224	145	40
Mayo	98	248	139	365	437	207
Meath	41	100	331	401	375	95
Monaghan	9	8	9	21	21	8
Offaly	7	32	52	77	51	38
Roscommon	18	56	111	128	99	90
Sligo	30	134	78	126	183	86
South Dublin	11	193	187	199	352	141
Tipperary NR	33	60	133	313	326	204
Tipperary SR	11	20	53	69	23	18
Waterford	17	14	21	39	25	23
Westmeath	127	430	161	844	249	56
Wexford	21	75	20	12	13	41
Wicklow	81	217	361	797	360	222
Sub(total)	1854	4390	5566	8 268	7 467	4 455
Cork	113	63	47	0	0	86
Dublin	121	528	574	609	576	465
Galway	19	36	32	37	28	51
Limerick	12	11	17	25	21	20
Waterford	9	8	16	3	16	1
Sub(total)	274	646	686	674	641	623
Total	2128	5 036	6252	8 942	8 108	5 078

¹ Applies from 11 March 2002 onwards

Tables 16 and 17

Tables 16, 16A, 17 and 17A give information on the use of procedures through which elected representatives can influence the planning control process: S140 of the Local Government Act, 2001 (formerly S4 of the Local Government City and County Management (Amendment) Act, 1955) and the procedure of material contravention of the development plan, as provided for under S34 of the 2000 Act.

While only limited use is made of these procedures overall, some authorities do use them to a considerable extent. Table 16A shows that the S140 procedure was used in 5 authorities, i.e. 5 county authorities account for 100% of the total usage. Table 16 indicates that the number of such motions was 27 (58% reduction on 2001) the number passed by Council decreased to 23 (a 45% fall on 2001 figure). The number of material contraventions resulting from S140 and S4 motions in 2002 continued to fall by 50% on the 2001 figure to only 5 instances.

Tables 17 and 17A show the use of the procedure under S34 (6) of the Planning and Development Act, 2000 which provides that a development may materially contravene the Development Plan subject to certain procedures being complied with. In this instance a decision to grant planning permission requires the vote of not less than three quarters of the members of the Council in favour. The increase in the number of 'material contraventions' in 2002 was in the order of 20%. The overall number of material contraventions passed by local authorities in 2001 was 93. This represented a 30% decrease on the 132 material contraventions passed in 2000. In 2002, 112 material contraventions were passed by local authorities, i.e. a 20% increase on the 2001 figure.

Table 16: Applications where S140 (formally S4) procedure was followed

Procedure	1996	1997	1998	1999	2000	2001	2002
- S4/Section 140 Procedure							
• On Agenda	37	28	32	47	81	64	27
• Passed by Council	9	3	8	11	34	42	23
• Superseded by Material Contravention	18	18	20	22	28	10	5

Table 16A: Applications where Section 4 or Section 140 procedures were followed by County

Area	Agenda	Passed	Superseded by Material Contravention
Carlow	0	0	0
Cavan	0	0	0
Clare	0	0	0
Cork	0	0	0
Donegal	2	2	2
Dun Laoghaire/Rathdown	0	0	0
Fingal	0	0	0
Galway	0	0	0
Kerry	12	10	3
Kildare	0	0	0
Kilkenny	0	0	0
Laois	0	0	0
Leitrim	0	0	0
Limerick	0	0	0
Longford	0	0	0
Louth	1	1	0
Mayo	0	0	0
Meath	0	0	0
Monaghan	0	0	0
Offaly	0	0	0
Roscommon	0	0	0
Sligo	0	0	0
South Dublin	0	0	0
Tipperary NR	2	0	0
Tipperary SR	0	0	0
Waterford	0	0	0
Westmeath	0	0	0
Wexford	0	0	0
Wicklow	10	10	0
Subtotal	27	23	5
Cork	0	0	0
Dublin	0	0	0
Galway	0	0	0
Limerick	0	0	0
Waterford	0	0	0
Subtotal	0	0	0
Total	27	23	5

Table 17 Applications where Procedure for Material Contravention of the Development Plan was followed

Procedure	1996	1997	1998	1999	2000	2001	2002
- Material Contravention							
• Notice of Intention	95	106	142	156	141	108	131
• Passed by Council	82	88	122	138	132	93	112

Table 17A: Applications where Procedure for Material Contravention of the Development Plan was followed by County

Area	Agenda	Passed
Carlow	2	2
Cavan	0	0
Clare	4	0
Cork	5	4
Donegal	7	4
Dun Laoghaire	0	0
Fingal	0	0
Galway	8	8
Kerry	16	13
Kildare	6	5
Kilkenny	0	0
Laois	6	6
Leitrim	1	1
Limerick	0	0
Longford	1	1
Louth	9	9
Mayo	7	7
Meath	0	0
Monaghan	1	1
Offaly	2	2
Roscommon	11	10
Sligo	1	1
South Dublin	2	2
Tipperary NR	0	0
Tipperary SR	4	3
Waterford	5	4
Westmeath	10	10
Wexford	9	8
Wicklow	5	3
Subtotal	122	104
Cork I	5	4
Dublin	0	0
Galway	4	4
Limerick	0	0
Waterford	0	0
Subtotal	9	8
Total	131	112

Tables 18 and 19

Table 18 provides information on the type of development applied for in planning applications. It is derived from the information on planning fees and the land use categories that are defined in the Planning and Development Regulations, 2001.

Tables 18 and 19 provide data on the number of applications in each fee class. Small discrepancies may occur between the total number of applications in these tables and the actual number presented in Table 2. This can be for a number of reasons: certain applications are exempted from fees, other applications falling into different fee classes may have been

counted more than once, and applications received in the earlier part of the year may have been withdrawn by year end.

In 2002 almost eight out of every ten applications were for residential development (class 1 and class 2 - houses and domestic 'extensions').

For comparative purposes the classes of development for 1997(2001 have been converted from the classes as per the Local Government (Planning and Development) Regulations, 1994 to the classes at Schedule 9 of the Planning and Development Regulations, 2001, see Appendix A.

Table 18: Planning Applications by Class of Development

Year	1	2	3	4	5	6	7	8	9	10	11	12	13	Total
1997	27 642	14 826	1 684	8 503	8	58	163	201	652	103	34	14	2 323	56 211
%	49.2	26.4	3.0	15.1	0.0	0.1	0.3	0.4	1.2	0.2	0.1	0.0	4.1	100.0
1998	35 832	16 618	1 397	9 076	8	88	163	229	564	131	92	10	2 487	66 695
%	53.7	24.9	2.1	13.6	0.0	0.1	0.2	0.3	0.8	0.2	0.1	0.0	3.7	100.0
1999	46 804	18 841	1 606	8 865	3	51	211	225	503	80	26	9	2 469	79 693
%	58.7	23.6	2.0	11.1	0.0	0.1	0.3	0.3	0.6	0.1	0.0	0.0	3.1	100.0
2000	54 594	18 610	1 271	8 529	10	57	200	261	523	98	21	12	3 154	87 340
%	62.5	21.3	1.5	9.8	0.0	0.1	0.2	0.3	0.6	0.1	0.0	0.0	3.6	100.0
2001	42 361	17 846	2 056	8 116	20	80	164	217	789	125	28	10	3 688	75 500
%	56.1	23.6	2.7	10.7	0.0	0.1	0.2	0.3	1.0	0.2	0.0	0.0	4.9	100.0
2002	35 455	14 627	1 940	6 745	255	92	139	148	320	100	31	12	2 939	62 803
%	56.5	23.3	3.1	10.7	0.4	0.1	0.2	0.2	0.5	0.2	0.0	0.0	4.7	100.0

Table 19: Applications by Area and Class of Development 2002

Area	Class 1	Class 2	Class 3	Class 4	Class 5	Class 6	Class 7	Class 8
Carlow	368	166	32	89	0	1	0	3
Cavan	1 014	266	87	131	0	5	0	1
Clare	1 517	488	119	201	0	1	9	8
Cork	3 478	1 484	206	217	156	8	16	21
Donegal	3 179	786	81	358	23	5	18	6
Dun Laoghaire(Rathdown)	298	879	3	217	0	1	3	2
Fingal	682	749	22	258	0	1	10	12
Galway	4 254	325	94	445	0	0	0	0
Kerry	2 530	407	155	197	2	11	2	0
Kildare	1 063	386	105	214	0	1	2	2
Kilkenny	752	360	144	152	0	1	6	3
Laois	522	226	41	99	0	2	2	8
Leitrim	397	202	10	54	0	0	1	3
Limerick	1 167	441	69	127	0	1	3	1
Longford	394	123	35	58	0	0	1	1
Louth	918	379	33	194	0	0	4	2
Mayo	1 955	298	68	233	0	4	0	9
Meath	988	535	88	238	0	9	3	14
Monaghan	684	221	49	129	0	1	8	4
Offaly	813	217	26	92	1	8	0	4
Roscommon	938	216	50	86	0	6	0	0
Sligo	614	230	24	104	0	2	1	0
South Dublin	280	487	1	196	57	0	4	8
Tipperary NR	928	303	72	138	4	0	2	0
Tipperary SR	700	279	114	275	0	5	5	2
Waterford	687	367	54	103	0	1	6	2
Westmeath	532	321	36	132	2	6	0	2
Wexford	1 969	837	89	288	1	11	12	5
Wicklow	777	442	26	125	9	1	9	1
Sub(total)	34 398	12 420	1 933	5 150	255	92	127	124
Cork	162	346	0	243	0	0	1	1
Dublin	636	1296	0	996	0	0	5	18
Galway	114	300	6	188	0	0	5	1
Limerick	53	172	0	73	0	0	0	3
Waterford	92	93	1	95	0	0	1	1
Sub(total)	1 057	2207	7	1 595	0	0	12	24
Total	35 455	14 627	1 940	6 745	255	92	139	148

Table 19: Applications by Area and Class of Development (Continued)

Area	Class 9	Class 10	Class 11	Class 12	Class 13	Total
Carlow	1	0	0	0	30	690
Cavan	3	3	0	0	63	1 573
Clare	5	3	3	1	181	2 536
Cork	15	8	3	2	192	5 806
Donegal	10	5	3	1	183	4 658
Dun Laoghaire(Rathdown)	18	0	1	0	76	1 498
Fingal	26	3	1	0	136	1 900
Galway	4	1	0	0	118	5 241
Kerry	16	0	0	0	337	3 657
Kildare	7	4	0	0	116	1 900
Kilkenny	4	4	0	1	22	1 449
Laois	7	1	2	0	18	928
Leitrim	1	13	0	1	21	703
Limerick	6	2	0	0	163	1 980
Longford	0	0	1	0	37	650
Louth	15	1	1	0	71	1 618
Mayo	6	2	0	1	146	2 722
Meath	4	3	0	0	101	1 983
Monaghan	7	0	0	0	69	1 172
Offaly	0	3	0	0	65	1 229
Roscommon	0	6	1	0	63	1 366
Sligo	4	6	0	1	17	1 003
South Dublin	23	5	2	0	31	1 094
Tipperary NR	0	2	5	1	35	1 490
Tipperary SR	12	2	0	1	14	1 409
Waterford	8	1	0	0	46	1 275
Westmeath	0	10	0	0	80	1 121
Wexford	11	3	2	2	45	3 275
Wicklow	14	4	6	0	193	1 607
Sub(total)	227	95	31	12	2669	57 533
Cork	18	1	0	0	33	805
Dublin	1	4	0	0	152	3 108
Galway	40	0	0	0	18	672
Limerick	11	0	0	0	22	334
Waterford	23	0	0	0	45	351
Sub(total)	93	5	0	0	270	5 270
Total	320	100	31	12	2939	62 803

Tables 20 and 21

Tables 20 and 21 list the total amount of development contributions which planning authorities receive through the procedure of levying charges in planning conditions (Section 48 of the 2000 Act).

The amount received in contributions has continued to rise since 1987 with an exceptional decline of approximately 2.5% between 1992 and 1993. There was an increase of approximately 26% for 1997, 15% in 1998, 31% in 1999, 27% in 2000, 11% in 2001, and 24% in 2002. Increases or decreases in the figures, may be the result of a number of factors such as changes in the rates charged, size and type of developments carried out in a particular year, the overall level of implementation of planning permissions and perhaps increased enforcement of planning conditions.

Table 20: Development Contributions

Year	Total Sum Received €
1987	6 579 227
1988	8 190 698
1989	11 449 212
1990	13 574 626
1991	15 679 526
1992	20 182 736
1993	19 659 661
1994	26 086 143
1995	28 440 440
1996	45 939 121
1997	57 813 153
1998	66 326 093
1999	87 171 931
2000	110 380 157
2001	121 976 012
2002	150 995 463

Table 21: Development Contributions by Area

Area	Contributions	
	2001	2002
Carlow	721,492	527,526
Cavan	985,723	1,250,997
Clare	1,342,238	1,848,373
Cork	9,803,819	13,650,879
Donegal	3,011,577	2,886,599
Dun Laoghaire/Rathdown	6,067,832	7,761,776
Fingal	14,764,631	16,338,872
Galway	3,688,593	3,472,987
Kerry	1,902,843	3,540,009
Kildare	6,078,742	9,249,082
Kilkenny	2,949,594	3,242,523
Laois	1,511,250	2,531,622
Leitrim	427,771	763,472
Limerick	2,277,417	2,896,451
Longford	866,501	1,438,301
Louth	5,174,232	8,993,794
Mayo	1,301,687	786,940
Meath	12,861,534	9,506,636
Monaghan	1,039,145	1,021,967
Offaly	983,783	1,194,923
Roscommon	798,832	1,958,157
Sligo	1,286,519	2,416,388
South Dublin	10,704,857	11,243,420
Tipperary NR	1,092,348	1,014,080
Tipperary SR	1,204,065	2,003,725
Waterford	1,659,281	1,596,213
Westmeath	2,067,964	1,819,521
Wexford	5,096,974	6,507,272
Wicklow	5,236,242	7,929,194
Sub-total	106,907,486	129,391,699
Cork	1,820,076	3,094,378
Dublin	7,606,758	8,654,092
Galway	3,815,743	5,142,663
Limerick	1,214,372	2,493,006
Waterford	611,577	2,219,625
Sub-total	15,068,526	21,603,764
Total	121,976,012	150,995,463

II Enforcement

Tables 22, 23, 24, 25, 26 and 27

These tables give information on the number of enforcement cases. Enforcement cases are dealt with under three principal procedures under the 1963 Act (as amended):

- Prosecution under Section 24;
- Serving of an Enforcement Notice under Sections 31 and 35 as well as Sections 32, 36 and 37;
- Serving of a Warning Notice under Section 26 of the 1976 Act (as amended).

From 11 March 2002 onwards enforcement cases commenced under the 2000 Act come under three procedures as follows:

- Offences /Unauthorised development under Section 151,
- Serving of enforcement notices under Section 154,
- Serving of enforcement notices in cases of urgency Section 155.

Please note that the issuing of the notice and the compliance with it need not necessarily take place within the same reporting year these tables will be better evaluated in the light of next year's returns.

Table 24 gives information on enforcement cases initiated and convicted by area under the 1963 and 1976 Planning Acts. Table 25 gives information on enforcement cases initiated and convicted by area and procedure under the 2000 Act. It also shows the number of enforcement notices complied with.

The fourth principal enforcement procedure is based on the jurisdiction of the High Court and the Circuit Court to grant injunctions where unauthorised development is taking place. Not only the planning authority but any member of the public can make an application to the Court under Section 160 of the 2000 Act (prior to 11 March 2002 Section 27 of the 1976 Act (as amended)). The use of this procedure has therefore been separated into two categories: initiation by the planning authority and initiation by 'other bodies or individuals' and is set out at Tables 26 and 27.

As both statistics are based on figures provided by the planning authorities, the second category may be underestimated because the planning authority need not necessarily be aware of applications by third parties.

Table 22: Enforcement Cases Initiated, by Procedure

Enforcement procedure	1997	1998	1999	2000	2001	2002
S24 1963 Act	20	6	27	59	32	5
S31 1963 Act	874	952	1 070	1 173	1 530	253
S32 1963 Act	1	6	14	12	26	4
S35 1963 Act	85	61	51	29	12	15
S36 1963 Act	0	0	0	0	0	0
S37 1963 Act	0	0	0	0	0	0
S26 1976 Act	293	272	234	381	244	50
S151 2000 Act	—	—	—	—	—	532
S154 2000 Act	—	—	—	—	—	542
S155 2000 Act	—	—	—	—	—	13
Total	1 273	1 297	1 396	1 654	1 844	1 414

Table 23: Enforcement Cases Convicted, by Procedure

Enforcement procedure	1997	1998	1999	2000	2001	2002
S24 1963 Act	3	3	2	22	4	0
S31 1963 Act	189	203	185	226	321	38
S32 1963 Act	0	0	0	0	6	2
S35 1963 Act	8	10	18	2	0	0
S36 1963 Act ¹	-	-	-	0	0	0
S37 1963 Act	0	0	0	0	0	0
S26 1976 Act	20	33	5	2	2	10
S151 2000 Act	—	—	—	—	—	4
S154 2000 Act	—	—	—	—	—	44
S155 2000 Act	—	—	—	—	—	13
Total	220	249	210	252	333	111

Note 1: S36 makes no provision for conviction

Table 24: Enforcement Cases by Area and Procedure in 2002 under the Local Government (Planning and Development) Acts 1963 and 1976

	Section 24 of 1963			Section 26 of 1976			Section 31 of 1963			Section 32 of 1963			Section 35 of 1963		
	Initiated	Convicted	Initiated Convicted	Initiated	Convicted	Initiated Convicted	No. of Notices Issued	No. of Notices Complied with	Prosecutions Initiated	No. of Notices Issued	No. of Notices Complied with	Prosecutions Initiated	No. of Notices Issued	No. of Notices Complied with	Prosecutions Initiated
Carlow	0	0	0	0	0	0	0	0	0	0	0	0	0	0	0
Cavan	0	0	0	1	0	0	1	0	0	0	0	0	0	0	0
Clare	0	0	0	0	0	0	0	0	0	0	0	0	0	0	0
Cork	0	0	0	0	0	0	0	0	0	0	0	0	0	0	0
Donegal	0	0	0	0	0	0	4	0	0	0	0	0	1	0	0
Dun Laoghaire -Rathdown	0	0	0	0	0	0	0	0	0	0	0	0	0	0	0
Fingal	0	0	0	1	0	0	27	14	11	0	0	0	0	0	0
Galway	0	0	0	9	2	0	37	22	12	0	0	0	0	0	0
Kerry	0	0	0	1	0	0	28	1	0	0	0	0	0	0	0
Kildare	5	0	0	1	0	0	11	5	0	0	0	0	0	0	0
Kilkenny	0	0	0	0	0	0	1	0	0	0	0	0	0	0	0
Laois	0	0	0	0	0	0	31	11	8	0	0	0	0	0	0
Leitrim	0	0	0	0	0	0	0	0	0	0	0	0	0	0	0
Limerick	0	0	0	0	0	0	0	0	0	0	0	0	0	0	0
Longford	0	0	0	0	0	0	3	0	0	0	0	0	0	0	0
Louth	0	0	0	8	1	0	30	15	4	0	0	0	11	5	0
Mayo	0	0	0	23	1	0	0	0	0	0	0	0	0	0	0
Meath	0	0	0	0	0	0	0	0	0	0	0	0	0	0	0
Monaghan	0	0	0	4	0	0	0	0	0	0	0	0	0	0	0
Offaly	0	0	0	0	0	0	0	0	0	0	0	0	0	0	0
Roscommon	0	0	0	0	0	0	0	0	0	0	0	0	0	0	0
Sligo	0	0	0	0	0	0	6	4	2	0	0	0	2	2	0
South Dublin	0	0	0	0	0	0	0	0	0	0	0	0	0	0	0
Tipperary NR	0	0	0	0	0	0	1	0	0	0	0	0	0	0	0
Tipperary SR	0	0	0	0	0	0	11	11	0	0	0	0	0	0	0
Waterford	0	0	0	0	0	0	0	0	0	0	0	0	0	0	0
Westmeath	0	0	0	0	0	0	0	0	0	0	0	0	0	0	0
Wexford	0	0	0	0	0	0	43	0	0	0	0	0	0	0	0
Wicklow	0	0	0	2	6	0	8	0	0	0	0	0	1	0	0
Sub Total	5	0	0	50	10	0	242	83	37	0	0	0	15	7	0
Cork	0	0	0	0	0	0	0	0	0	0	0	0	0	0	0
Dublin	0	0	0	0	0	0	0	0	0	0	0	0	0	0	0
Galway	0	0	0	0	0	0	0	0	0	0	0	0	0	0	0
Limerick	0	0	0	0	0	0	0	0	0	0	0	0	0	0	0
Waterford	0	0	0	0	0	0	11	3	1	1	2	0	0	0	0
Sub - Total	0	0	0	0	0	0	11	3	1	1	2	0	0	0	0
Total	5	0	0	50	10	0	253	86	38	4	1	2	15	7	0

Table 25: Enforcement Cases by Area and Procedure under the Planning and Development Act 2000 for 2002

	Section 151			Section 154 of 2000 Act				Section 155 of 2000 Act			
	Initiated	Convicted		No. of Notices Issued	No. of Notices Complied with	Prosecutions Initiated	Convicted	No. of Notices Issued	No. of Notices Complied with	Prosecutions Initiated	Convicted
Carlow	3	0		23	20	1	0	0	0	0	0
Cavan	0	0		5	1	1	0	0	0	0	0
Clare	18	0		118	61	21	9	5	3	0	0
Cork	0	0		9	0	0	0	9	1	1	0
Donegal	2	0		30	7	15	0	3	1	0	0
Dun Laoghaire /Rathdown	0	0		56	0	27	4	0	0	0	0
Fingal	0	0		35	18	7	0	0	0	0	0
Galway	0	0		70	41	10	2	41	21	10	2
Kerry	10	2		132	79	15	2	16	13	0	0
Kildare	2	0		47	9	9	0	0	0	0	0
Kilkenny	2	1		26	2	1	0	0	0	0	0
Laois	0	0		42	6	3	0	0	0	0	0
Leitrim	0	0		0	0	0	0	0	0	0	0
Limerick	129	0		69	8	27	0	3	1	2	0
Longford	84	0		12	7	3	0	0	0	0	0
Louth	0	0		109	35	44	7	1	1	0	0
Mayo	0	0		126	0	117	13	0	0	0	0
Meath	0	0		0	0	0	0	0	0	0	0
Monaghan	67	0		31	1	5	0	0	0	0	0
Offaly	0	0		0	7	0	0	0	0	0	0
Roscommon	78	0		38	3	8	0	0	0	0	0
Sligo	3	1		15	5	0	0	0	0	0	0
South Dublin	0	0		189	41	48	1	0	0	0	0
Tipperary NR	0	0		22	6	4	0	0	0	0	0
Tipperary SR	14	0		32	22	2	0	0	0	0	0
Waterford	44	0		61	40	11	0	0	0	0	0
Westmeath	0	0		30	0	4	0	0	0	0	0
Wexford	76	0		134	7	84	3	0	0	0	0
Wicklow	0	0		105	0	11	3	2	2	0	0
Sub Total	532	4		1566	426	478	44	80	43	13	2
Cork	0	0		1	0	0	0	0	0	0	0
Dublin	0	0		8	6	0	0	18	15	0	0
Galway	0	0		98	4	60	0	0	0	0	0
Limerick	0	0		2	0	2	0	0	0	0	0
Waterford	0	0		35	0	2	0	0	0	0	0
Sub - Total	0	0		144	10	64	0	18	15	0	0
Total	532	4		1710	436	542	44	98	58	13	2

Table 26: Applications for Injunction Order to High Court S27 of 1976 Act
(as amended) and S160 of 2000 Act¹

Year	Applications by Planning Authority		Applications by Others	
	Number of applications	Number granted	Number of applications	Number granted
1994	35	15	3	1
1995	66	20	2	2
1996	42	27	2	1
1997	29	17	0	0
1998	51	25	1	0
1999	53	26	1	1
2000	60	29	2	1
2001	146	68	5	1
2002	35	20	1	0

Table 27: Applications for Injunction Order to Circuit Court S27 of 1976 Act
(as amended) and S160 of 2000 Act¹

Year	Applications by Planning Authority		Applications by Others	
	Number of applications	Number granted	Number of applications	Number granted
1994	30	16	2	2
1995	21	8	0	0
1996	37	17	2	2
1997	37	13	2	2
1998	52	31	2	0
1999	71	23	3	3
2000	66	27	5	4
2001	89	15	4	2
2002	144	37	2	0

¹ Applies from 11 March 2002 onwards

III Fees and Administration

Tables 28, 29, 30, 31 and 32

The changes in fee class classification are noted in the introduction to Tables 18 and 19, the revised fee classes under the Planning and Development Regulations, 2001 are set out at Appendix A. Tables 28, 29 and 30 deal with planning application fees. As in previous years, planning fees for Class 4 applications continued to be quite high. Class 4 continues to account for almost 60% of fees. Table 30 gives a detailed account of the fees received in each area specified by class of development (see Appendix A).

Table 31 gives the fees received under a number of categories other than for planning application fees. Table 32 gives the overall amounts for each category of fees.

Table 28: Total Amount Received in Application Fees by Class of Development - with Percentage Breakdown

2002	€s	Percentage	2002	€s	Percentage
Class 1	6 750 767	25.07	Class 8	134 214	0.50
Class 2	929 690	3.45	Class 9	97 771	0.36
Class 3	605 026	2.25	Class 10	26 630	0.10
Class 4	15 220 846	56.53	Class 11	32 863	0.12
Class 5	115 775	0.43	Class 12	1 628	0.01
Class 6	365 154	1.36	Class 13	2 591 046	9.62
Class 7	54 116	0.20			
Total				26 925 526	100

Table 29: Total Amount Received in Application Fees by Class of Development

Class of Development	1999	2000	2001	2002
1	10 042 124	11 998 112	8 630 268	6 750 767
2	821 495	1 276 870	1 078 767	929 690
3	424 810	607 967	1 004 086	605 026
4	17 283 474	18 183 683	18 058 364	15 220 846
5	698	15 276	8 967	115 775
6	189 976	109 858	345 445	365 154
7	166 087	84 294	110 258	54 116
8	60 843	73 809	76 056	134 214
9	157 947	135 499	500 623	97 771
10	16 833	23 621	25 969	26 630
11	52 044	9 013	19 338	32 863
12	1 036	1 282	1 745	1 628
13	1 266 438	1 689 185	2 231 169	2 591 046
Total	30 483 805	34 208 468	32 091 053	26 925 526

Table 30: Amount Received in Application Fees by Area and Class of Development

Area	Class 1	Class 2	Class 3	Class 4	Class 5	Class 6	Class 7	Class 8
Carlow	62 698	5 621	5 843	168 054	0	2 635	0	724
Cavan	169 735	9 778	33 660	180 323	0	46 546	0	1 470
Clare	191 320	32 483	143 148	153 434	0	2 056	468	12 167
Cork	553 700	87 711	56 745	452 027	0	54 933	5 915	19 285
Donegal	402 205	43 604	17 733	696 133	1 840	20 364	11 661	10 146
Dun Laoghaire-Rathdown	116 350	39 987	372	840 767	0	6 000	257	280
Fingal	795 020	68 068	4 969	1 170 768	0	445	5 566	13 326
Galway	614 294	22 408	13 339	294 506	0	0	93	0
Kerry	309 734	21 084	21 558	368 846	0	26 431	10 487	1 202
Kildare	296 736	18 753	16 219	1 012 297	0	16 200	437	252
Kilkenny	163 281	16 681	30 611	278 457	0	10 600	1 538	1 570
Laois	91 927	13 910	5 962	237 642	0	5 022	1 030	1 382
Leitrim	48 851	15 941	1 679	89 103	0	0	80	856
Limerick	158 404	23 843	28 624	252 392	0	2 557	97	181
Longford	49 109	9 708	8 354	118 120	0	0	0	274
Louth	180 086	31 927	38 317	609 137	0	0	549	830
Mayo	149 765	13 013	11 671	440 371	0	4 203	0	742
Meath	312 244	32 168	32 406	645 658	0	34 006	693	10 097
Monaghan	85 470	21 672	6 784	317 926	0	0	4 644	1 975
Offaly	166 990	22 983	6 254	133 843	80	36 267	0	1 376
Roscommon	149 481	22 923	5 966	155 125	0	3 361	0	1 368
Sligo	105 719	10 965	4 384	198 216	0	39 568	74	0
South Dublin	168 117	16 023	265	863 288	98 033	0	393	1 466
Tipperary NR	135 340	10 356	12 400	284 917	4 196	0	0	0
Tipperary SR	134 376	19 811	27 039	356 888	0	8 543	539	834
Waterford	86 352	15 217	13 721	164 623	0	1 220	298	7 703
Westmeath	80 881	30 445	29 147	165 997	10 192	10 549	0	74
Wexford	256 376	29 939	15 220	446 451	629	31 748	5 388	1 660
Wicklow	120 628	23 655	10 986	199 596	805	1 900	1 182	7 086
Sub-total	6 155 189	730 677	603 376	11 294 905	115 775	365 154	51 389	98 326
Cork	97 598	59 995	0	315 338	0	0	480	200
Dublin	359 586	106 352	0	2 578 352	0	0	583	4 686
Galway	18 335	17 445	430	485 714	0	0	746	30 389
Limerick	36 929	8 904	0	228 885	0	0	0	413
Waterford	83 130	6 317	1 220	317 652	0	0	918	200
Sub-total	595 578	199 013	1 650	3 925 941	0	0	2727	35 888
Total	6 750 767	929 690	605 026	15 220 846	115 775	365 154	54 116	134 214

Table 30: Amount Received in Application Fees by Area and Class of Development (Continued)

Area	Class 9	Class 10	Class 11	Class 12	Class 13	Fees Total
Carlow	80	0	0	0	6 246	251 901
Cavan	440	545	0	0	111 189	553 686
Clare	896	234	1 140	200	143 099	680 645
Cork	4 543	2 652	3 971	146	36 474	1 278 102
Donegal	3 598	313	5 021	200	139 447	1 352 265
Dun Laoghaire-Rathdown	6 063	0	80	0	83 855	1 094 011
Fingal	25 545	405	6 978	0	88 814	2 17 9904
Galway	849	49	0	0	144 130	1 089 668
Kerry	257	4 415	0	0	374 900	1 138 914
Kildare	260	360	0	0	55 616	1 417 130
Kilkenny	1 990	0	0	200	6 534	511 462
Laois	1 643	200	1 430	0	26 977	387 125
Leitrim	0	5 200	0	0	10 226	171 936
Limerick	4 756	224	0	0	164 918	635 996
Longford	0	0	20	0	2 124	187 709
Louth	8 204	104	108	0	57 316	926 578
Mayo	532	1 047	0	73	224 724	846 141
Meath	2 582	847	0	0	32 398	1 103 099
Monaghan	984	0	0	0	30 757	470 212
Offaly	0	859	0	0	134 465	503 117
Roscommon	0	463	1 177	0	59 202	399 066
Sligo	2 101	2 317	0	200	5 973	369 517
South Dublin	5 957	458	1 871	0	3 372	1 159 243
Tipperary NR	0	160	1 099	185	9 989	458 642
Tipperary SR	799	371	0	200	1 661	551 061
Waterford	779	100	0	0	33 420	323 433
Westmeath	0	2 488	0	0	29 217	358 990
Wexford	1 766	1 250	180	224	5 654	796 485
Wicklow	2 744	853	9 788	0	421 770	800 993
Sub-total	77 368	25 914	32 863	1 628	2 444 467	21 997 031
Cork	8 376	80	0	0	25 290	507 357
Dublin	146	636	0	0	85 337	3 135 678
Galway	7 503	0	0	0	20 591	581 153
Limerick	3 384	0	0	0	9 846	288 361
Waterford	994	0	0	0	5 515	415 946
Sub-total	20 403	716	0	0	146 579	4 928 495
Total	97 771	26 630	32 863	1 628	2 591 046	26 925 526

Table 31: Fees Received Other than Application Fees by Area and by Type of Fee

Area	Extension	Register	Licence	Exemption	Compliance	Miscellaneous	Submissions & Observations	Outdoor Events	Total
Carlow	0	157	10 528	230	750	4 698	1 720	0	18 083
Cavan	114	0	183	0	0	7 820	3 040	0	11 157
Clare	434	0	2 040	80	0	38 467	7 100	0	48 121
Cork	1 010	80	25 288	6940	57 731	33 750	14 600	635	140 034
Donegal	1 353	0	6 372	80	896	77 189	8 972	0	94 862
Dun Laoghaire- Rathdown	124	0	0	1600	457	13 410	30 240	2000	47 831
Fingal	248	10 846	0	560	2 966	32 611	7 997	0	55 228
Galway	774	0	40	0	0	33 764	4 478	0	39 056
Kerry	186	0	19 037	960	1 954	31 636	17 712	7500	78 985
Kildare	371	305	25 671	80	675	41 148	14 600	2500	85 350
Kilkenny	62	1 767	902	640	3 154	11 373	3 540	2500	23 938
Laois	0	2 670	970	80	0	111 554	1 460	0	116 734
Leitrim	62	1 084	459	0	1 481	744	1 270	0	5 100
Limerick	2 067	4 430	2 510	517	0	40 265	5 630	0	55 419
Longford	114	0	25	80	0	3 580	4 794	0	8 593
Louth	178	112	5 157	316	122	36 672	10 160	0	52 717
Mayo	1 297	97	737	0	250	24 552	4 000	0	30 933
Meath	186	1 925	0	1200	2 914	10 611	14 797	2500	34 133
Monaghan	0	0	3 828	1845	560	4 345	2 160	0	12 738
Offaly	0	63	75	160	1 441	1 765	2 130	0	5 634
Roscommon	248	0	0	240	0	8 043	2 760	0	11 291
Sligo	114	2 062	454	560	1 270	11 869	2 300	0	18 629
South Dublin	228	0	0	800	0	17 878	24 556	0	43 462
Tipperary NR	1 219	2 340	8 853	33	499	11 011	2 360	0	26 315
Tipperary SR	278	1 751	10 489	240	175	875	3 980	0	17 788
Waterford	248	0	8 604	1200	1 740	4 086	2 360	0	18 238
Westmeath	0	0	5 257	0	0	37 709	2 911	0	45 877
Wexford	62	0	4 940	1230	1 088	64 375	4 360	0	76 055
Wicklow	62	0	393	3685	56 723	115 976	6 360	0	183 199
Sub-total	11 039	29 689	142 812	23356	136 846	831 776	212 347	17635	1 405 500
Cork	186	100	675	2000	9 862	6 064	8 020	5000	31 907
Dublin	372	10 758	0	5040	0	20 458	24 540	10000	71 168
Galway	0	0	11 971	960	0	1 535	3 080	0	17 546
Limerick	2 028	0	11 562	720	3 392	2 765	2 520	0	22 987
Waterford	0	851	1 554	0	7 616	2 484	1 690	0	14 195
Sub-total	2 586	11 709	25 762	8720	20 870	33 306	39850	15 000	157 803
Total	13 625	41 398	168 574	32076	157 716	865 082	252197	32 635	1 563 303

Table 32: Total Amount Received in Fees by Type of Fee

Type of fee	1999	2000	2001	2002
Application fees, gross	30 572 686	32 638 620	32 091 052	26 925 526
Application fees, refunds	714 537	537 387	956 796	681 349
Application fees, net	29 858 149	32 101 233	31 134 256	26 244 177
Other fees total	769 268	871 927	1 582 659	2 442 787
Total	30 627 417	32 973 160	32 716 915	28 686 964

Tables 33 and 34

Tables 33 and 34 give a breakdown of staff by full/part time and technical / administrative. The category 'part time' includes part time employees as well as full time employees who are involved in planning work for only part of their time. The total staff complement has been calculated as the sum of technical and administrative staff. Technical staff include fire officers, health officers, etc., who are for part of their time involved with planning control duties.

Over three-quarters of staff involved in planning in the local authorities are full time. Reporting on the category "part-time" has been uneven and the category may not be correctly interpreted by all authorities.

Table 33: Staff

Year	Full time	Part time	Technical	Administrative	Total
1997	759	355	579	535	1 114
1998	810	304	589	525	1 114
1999	955	334	661	628	1 289
2000	1 000	333	733.5	599.5	1 333
2001	1 185	355	798.5	741.5	1 540
2002	1 376.5	317.5	845	849	1 694

Table 34: Staff by Area

Area	Technical		Administrative		Total
	Full time	Part time	Full time	Part time	
Carlow	7	6	10	8	31
Cavan	8	19	10	8	45
Clare	23	8	27	2	60
Cork	50	27	80	22	179
Donegal	22	20	23	5	70
Dun Laoghaire-Rathdown	20	0	34	0	54
Fingal	45	1	55	0	101
Galway	30	1	15.5	0	46.5
Kerry	28	3	29	4	64
Kildare	20	12	31	4	67
Kilkenny	17	0	14	2	33
Laois	7	0	11	0	18
Leitrim	5	1	9	0	15
Limerick	20	0	19	0	39
Longford	4	7	6	1	18
Louth	18	11	18	5	52
Mayo	9	4	17	4	34
Meath	14	8.5	28.5	4.5	55.5
Monaghan	6	11	10	4	31
Offaly	13	8	13	2	36
Roscommon	12	4.5	16	0	32.5
Sligo	13	17	17	0	47
South Dublin	31	4.5	40	0.5	76
Tipperary NR	7.5	0	12	3	22.5
Tipperary SR	17	3	14	8	42
Waterford	12.5	0	11	0	23.5
Westmeath	16	7	18	8	49
Wexford	21	3	30	1	55
Wicklow	18	8	20.5	4	50.5
Sub-total	514	194.5	638.5	100	1 447
Cork	16	7	12	3	38
Dublin	77.5	0	68	0	145.5
Galway	13	1	14	0	28
Limerick	6	8	6	3	23
Waterford	7	1	4.5	0	12.5
Sub-total	119.5	17	104.5	6	247
Total	633.5	211.5	743	106	1 694

IV Other

Table 35

The Local Government (Planning and Development) Act 1990, which consolidated and amended the law on planning compensation, took effect from June 10, 1990. Since 2002 planning compensation is provided for by Part XII of the Planning and Development Act, 2000. Table 35 provides a summary from the year 1995 onwards and gives additional information on the number and cost of claims which were 'otherwise disposed of'. In 2002, 5 claims were made to the value of €28.6m.

Table 35 : Claims for Compensation¹

Year	Claims		Number Paid	Amount Paid €	'Disposed'	
	No	Amount €			No	Value €
1995	4	983 412	0	0	1	14 602
1996	0	0	1	33 286	0	0
1997	5	2 945 792	0	0	5	2 945 792
1998	7	12 798 960	0	0	3	7 364 481
1999	0	0	0	0	0	0
2000	9	42 216 886	0	0	1	0
2001	0	0	0	0	0	0
2002	5	28 642 705	1	380 921	0	0

¹ Local Government (Planning and Development) Act 1990 and Planning and Development Act 2000 - from 11/03/2002

Tables 36, 37, 38, 39, and 40

Table 36 gives the number of agreements made under S47 of the 2000 Planning Act. These are formal agreements (covenants) between the planning authority and the landowner. The use of this provision varies widely between planning authorities.

Table 37 shows the number of Tree Preservation Orders in force by the end of the years 2000, 2001 and 2002 by area.

The use of S42 of the 2000 Act, which allows an extension of the five-year validity period of a permission where development is under construction, is recorded in Table 38. Table 39 records the applications made for licences of appliances and cables along a public road under S254 of the Planning and Development Act, 2000.

Table 40 records the levels of use of various sections of the Planning Acts.

Table 36: Agreements under S38 of the 1963 Planning Act and S47 of the 2000 Planning Act

	1997	1998	1999	2000	2001	2002
Carlow	10	35	22	46	9	0
Cavan	0	0	0	0	0	0
Clare	28	27	57	0	6	16
Cork	160	143	304	651	817	804
Donegal	8	22	26	7	22	22
Dun Laoghaire/Rathdown	3	7	0	3	4	0
Fingal	12	0	0	0	1	0
Galway	150	0	0	0	0	0
Kerry	2	0	18	16	0	9
Kildare	115	121	81	44	56	0
Kilkenny	6	0	0	20	10	26
Laois	7	19	37	59	59	77
Leitrim	0	0	0	0	0	0
Limerick	14	8	3	1	0	0
Longford	0	0	0	0	0	0
Louth	0	0	19	2	201	0
Mayo	0	0	0	15	0	0
Meath	30	23	19	8	9	0
Monaghan	1	2	15	10	6	7
Offaly	5	3	2	1	0	13
Roscommon	8	3	4	0	5	29
Sligo	2	13	24	19	26	40
South Dublin	0	0	0	1	0	0
Tipperary NR	5	1	1	0	3	5
Tipperary SR	3	2	6	12	8	8
Waterford	3	4	7	5	2	5
Westmeath	15	19	15	5	9	0
Wexford	1	0	7	3	11	75
Wicklow	67	87	76	54	24	25
Sub-total	655	539	743	982	1 288	1 161
Cork	1	0	0	1	1	1
Dublin	0	0	0	0	1	0
Galway	0	0	0	0	0	0
Limerick	0	0	0	0	0	0
Waterford	0	0	0	1	0	0
Sub-total	1	0	0	2	2	1
Total	656	539	743	984	1 290	1 162

Table 37: Tree Preservation Orders by Area

	No. of orders in force at end of 2000	No. of orders in force at end of 2001	No. of orders in force at end of 2002
Carlow	3	1	0
Cavan	0	0	0
Clare	1	0	0
Cork	8	0	0
Donegal	3	0	0
Dun Laoghaire/Rathdown	8	0	9
Fingal	3	0	0
Galway	1	0	0
Kerry	0	0	0
Kildare	4	0	0
Kilkenny	5	3	0
Laois	0	0	0
Leitrim	2	0	0
Limerick	2	2	0
Longford	0	0	0
Louth	4	4	4
Mayo	9	0	0
Meath	6	7	0
Monaghan	1	0	0
Offaly	14	0	7
Roscommon	3	0	0
Sligo	1	1	2
South Dublin	3	0	0
Tipperary NR	3	3	3
Tipperary SR	6	0	0
Waterford	24	24	24
Westmeath	17	17	17
Wexford	1	0	0
Wicklow	49	46	45
Sub-total	181	108	111
Cork	11	9	0
Dublin	2	0	0
Galway	0	0	0
Limerick	3	0	2
Waterford	2	0	2
Sub-total	18	9	4
Total	199	117	115

Table 38: Extension of Duration of Permission for Substantially Completed Development
(S4 1982 Act\S42 2000 Act)¹

Year	Applied	Extensions Granted	Refused
1993	96	74	16
1994	124	98	12
1995	142	112	19
1996	152	113	28
1997	134	106	20
1998	112	79	20
1999	80	60	10
2000	138	117	45
2001	103	69	22
2002	173	112	43

¹ Applies from 11 March 2002 onwards

Table 39: S89 of 1963 Act or S254 of 2000 Act Licence Applications

Area	Applications	Granted	Refused
Carlow	11	11	0
Cavan	7	7	0
Clare	24	24	0
Cork	51	48	3
Donegal	37	33	4
Dun Laoghaire/Rathdown	0	0	0
Fingal	0	0	0
Galway	23	2	0
Kerry	127	126	1
Kildare	8	8	0
Kilkenny	13	11	1
Laois	8	3	2
Leitrim	11	9	2
Limerick	0	0	0
Longford	1	1	0
Louth	35	34	1
Mayo	8	8	0
Meath	11	5	0
Monaghan	1	1	0
Offaly	2	1	0
Roscommon	0	0	0
Sligo	4	4	0
South Dublin	0	0	0
North Tipperary	5	2	4
South Tipperary	92	81	0
Waterford	235	234	1
Westmeath	19	17	2
Wexford	44	40	4
Wicklow	22	8	10
Sub-total	799	718	35
Cork	19	9	10
Dublin	7	30	2
Galway	70	68	2
Limerick	35	32	0
Waterford	5	3	2
Sub-total	136	142	16
Total	935	860	51

Table 40: Use of Miscellaneous Sections of the 1963 and 2000 Planning Acts¹

Section	1997	1998	1999	2000	2001	2002
S30 1963 Act/S44 2000 Act	10	0	3	0	0	0
S44 1963 Act/S46 2000 Act	0	0	0	33	79	0
S47 1963 Act/S206 2000 Act	0	0	0	1	0	1
S48 1963 Act/S207 2000 Act	0	0	0	0	0	0
S54 1963 Act/S209 2000 Act	0	1	0	0	0	0
S85 1963 Act/S182 2000 Act	44	36	30	26	11	25

¹ See Appendix D for titles of these sections

Appendix A

- Planning Fee Classes of Development

Planning and Development Regulations, 2001		Local Government (Planning and Development) Regulations, 1994
Class of Development	Title of Class of Development	Class of Development
1	Houses	1 ["Dwellings"]
2	Domestic extensions etc.	2
3	Agricultural buildings and structures, buildings for keeping greyhounds	3 and 4
4	Other Buildings (other than classes 1, 2 or 3)	5
5	Intensive agriculture, afforestation, peat extraction	6
6	Use of land for mining or for dumping	7
7	Use of land for caravanning, parking of vehicles or open storage	8
8	Provision of plant and machinery, or of storage tank or structures	9
9	Advertisements	11
10	Electricity lines or overhead telecommunications lines	12
11	Use of land as a golf course or as a pitch and putt course	13
12	Use of land as a burial ground	14
13	Development not coming within any of the foregoing classes	10 and 15

Appendix B

- Enactments and Regulations relating to Physical Planning (to end 2002)

Planning and Development Acts

Local Government (Planning and Development) Act, 1963 (No. 28 of 1963)
Local Government (Planning and Development) Act, 1976 (No. 20 of 1976)
Local Government (Planning and Development) Act, 1982 (No. 21 of 1982)
Local Government (Planning and Development) Act, 1983 (No. 28 of 1983)
Local Government (Planning and Development) Act, 1990 (No. 11 of 1990)
Local Government Act, 1991 (Sections 44 and 45) (No. 11 of 1991)
Local Government (Planning and Development) Act, 1992 (No. 14 of 1992)
Local Government (Planning and Development) Act, 1993 (No. 12 of 1993)
Local Government (Planning and Development) Act, 1998 (No. 9 of 1998)
Local Government (Planning and Development) Act, 1999 (No. 17 of 1999)
Planning and Development Act, 2000 (No. 30 of 2000)
Planning and Development (Amendment) Act, 2002 (No. 32 of 2002)

Planning and Development Regulations

European Communities (Environmental Impact Assessment) Regulations, 1989 (S.I. No. 349 of 1989)
European Communities (Environmental Impact Assessment) (Amendment) Regulations, 1994. (S.I. 84 of 1994)
Local Government (Planning and Development) Regulations, 1994 (S.I. No. 86 of 1994)
Local Government (Planning and Development) Regulations, 1995 (S.I. No. 69 of 1995)
Local Government (Planning and Development) Regulations, 1995 (S.I. No. 75 of 1995)
Local Government (Planning and Development) Regulations, 1996 (S.I. No. 100 of 1996)
Local Government (Planning and Development) Regulations, 1996 (S.I. No. 101 of 1996)
Local Government (Planning and Development) Regulations, 1997 (S.I. No. 78 of 1997)
Local Government (Planning and Development) Regulations, (No.2) 1997 (S.I. No. 121 of 1997)
Local Government (Planning and Development) (No.3) Regulations, 1997 (S.I. No. 261 of 1997)
Local Government (Planning and Development) (Fees) (Amendment) Regulations 1998 (S.I. No. 119 of 1998)
Local Government (Planning and Development) Regulations, 1998 (S.I. No. 124 of 1998)
Local Government (Planning and Development) (fees) (Amendment) (No. 2) Regulations, 1998 (S.I. No. 128 of 1998)
Local Government (Planning and Development) (No. 2) Regulations, 1998 (S.I. No. 194 of 1998)
Local Government (Planning and Development) Regulations, 1999 (S.I. No. 92 of 1999)
European Communities (Environmental Impact Assessment) (Amendment) Regulations, 1999. (S.I. No. 93 of 1999)
Local Government (Planning and Development) (No.2) Regulations, 1999. (S.I. No. 431 of 1999)
Local Government (Planning and Development) Regulations, 2000 (S.I. No. 181 of 2000)
Planning and Development Act, 2000 (Commencement) Order, 2000 (S.I. No. 349 of 2000)
Local Government (Planning and Development) Regulations, 2000 (S.I. No. 350 of 2000)
Planning and Development Act, 2000 (Commencement) (No. 2) Order, 2000 (S.I. No. 449 of 2000)
European Communities (Environmental Impact Assessment) (Amendment) Regulations, 2000 (S.I. No. 450 of 2000)
Local Government (Planning and Development) (No. 2) Regulations, 2000 (S.I. No. 457 of 2000)
Local Government (Planning and Development) (No. 2) Regulations, 2000 (S.I. No. 458 of 2000)

Planning and Development Act, 2000 (Commencement) Order, 2001 (S.I. No. 153 of 2001)
Planning and Development (Licensing of Outdoor Events) Regulations, 2001 (S.I. No. 154 of 2001)
Planning and Development Act, 2000 (Commencement)(No. 2) Order, 2001 (S.I. No. 335 of 2001)
Planning and Development (Appointment of Chairperson and Ordinary Members of An Bord Pleanála) Regulations, 2001 (S.I. No. 336 of 2001)
Local Government (Planning and Development) (Fees) Regulations, 2001 (S.I. No. 525 of 2001)
Local Government (Planning and Development) (Amendment) Regulations, 2001 (S.I. No. 539 of 2001)
Planning and Development Act, 2000 (Commencement) (No. 3) Order, 2001 (S.I. No. 599 of 2001)
Planning and Development Regulations, 2001 (S.I. No. 600 of 2001)
Planning and Development Regulations, 2002 (S.I. No. 70 of 2002)
Planning and Development (No. 2) Regulations, 2002 (S.I. No. 149 of 2002)

Planning and Development General Policy Directives

Local Government (Planning and Development) General Policy Directive, 1982 (S.I. No. 264 of 1982)
Local Government (Planning and Development) General Policy Directive, 1988 (S.I. No. 317 of 1988)
Local Government (Planning and Development) General Policy Directive, (Shopping), 1998 (Revocation Order), 2001 (S.I. No. 1 of 2001)

Appendix C:

- Other Publications

Other publications dealing with planning statistics include:

- Planning Statistics (Quarterly), Department of the Environment, Heritage and Local Government
- Statistical Release - Planning Permissions (Quarterly), Central Statistics Office
- Environment Bulletin (Quarterly), Department of the Environment, Heritage and Local Government
- An Bord Pleanála Annual Report

Appendix D:

- *Miscellaneous Sections of the 1963 and 2000 Planning Acts*

Description of Provision	Local Government (Planning and Development) Act, 1963	Planning and Development Act, 2000
Revocation and modification of permission Requiring removal or alteration of a structure or discontinuance of use	S30 S44 ¹	S44 S46
Creation of public rights of way pursuant to agreement	S47	S206
Compulsory powers for creation of public rights of way	S48	S207
Repair and tidying of advertisement structures and advertisements	S54	S209
Placing of cables, wires and pipelines by planning authority	S85	S182

¹ S. 44 of the 1963 Planning Act refers to alteration of a hedge.