

Introduction

The publication series Planning Statistics was established in 1986. Its main objective is to monitor the implementation of the Local Government (Planning and Development) Acts 1963 - 1999. Most of the statistics relate to development control procedures (planning applications, appeals, fees, enforcement, etc.) and provide an up-to-date picture of the current situation as well as the trends emerging in relation to the operation of the physical planning system as a whole.

The current edition takes 1995 as its starting point and refers the reader to earlier editions for information prior to that date. Table 1, which gives overall trends from 1977 to date, has been retained.

The Planning Statistics Quarterly has been available since the beginning of 1990. It provides a breakdown of basic information on planning applications, decisions, refusals and deferrals by individual authority. Since 1990, information (in particular, Tables 2 and 3) is presented in the Annual Statistics by Area, an Area being a county authority and all other authorities within that county but excluding Borough Councils.

Most of the figures presented here are based on information submitted by planning authorities either quarterly or annually to the Department of the Environment. The accuracy of the figures is dependent on the accuracy of the data submitted by each planning authority. Where discrepancies were noted (for example, in comparing aggregated quarterly returns with annual returns) these were resolved, where possible, by further communication with the relevant authorities. Minor discrepancies, where they remain unresolved, have been noted in individual tables.

In calculating 'number of permissions', 'number of refusals', 'number of enforcement cases' and 'number of convictions' it should be borne in mind that the total number of refusals for one year could refer to applications from the previous year; similarly a period of more than one year could elapse between the initiation of an enforcement order and a possible conviction. In making comparisons between the 'deferral rate' for 1991 and subsequent years and years prior to 1991, it should be noted that since 1990 the 'deferral rate' includes those cases deferred with the written consent of the applicant. In years prior to 1990 only cases arising from requests for additional information were taken into account.

The tables have been grouped in four sections. The first two sections, 'Planning Applications' and 'Enforcement' deal with the development control system. The third section, 'Fees and Administration', covers the administrative aspects of the planning system, including staffing and resources, while the final section provides statistics on the use of various procedures in the Planning Acts.

A short section of text precedes each table or set of tables. Deficiencies in the statistics that may affect the validity or interpretation are pointed out in these paragraphs. In addition, some interpretation of the data is provided where relevant. However, the main purpose of this publication is to provide a set of basic planning statistics.

Planning and Development Act 2000

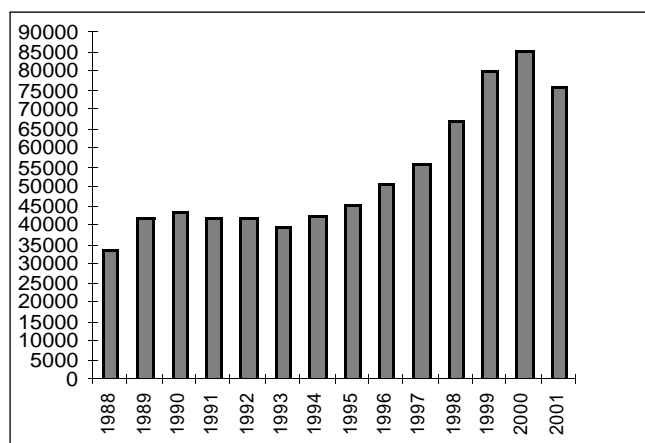
In August 2000, the Planning and Development Act, 2000 was enacted following detailed consideration of its provisions by the Oireachtas. This Act, which revises, extends and consolidates the legislative basis for the Irish planning system, introduced many significant changes and initiatives designed to introduce a sustainable development ethos into the Irish planning system, increase the efficiency of the system and ensure a strategic approach to land-use planning in Ireland.

Important changes introduced by the Act include new streamlined procedures for the making of development plans at county and local level within a regional planning framework. Procedures for dealing with planning applications and enforcement have been simplified and public involvement in these procedures strengthened. The Act contains innovative proposals for the establishment of strategic development zones to facilitate the provision of housing and important new industries. The statutory functions of the Minister in relation to compulsory acquisitions by local authorities and environment impact assessment of local authority development were transferred to An Bord Pleanála. This change was designed to update the decision making process for major infrastructural developments, including roads, under the National Development Plan 2000 - 2006.

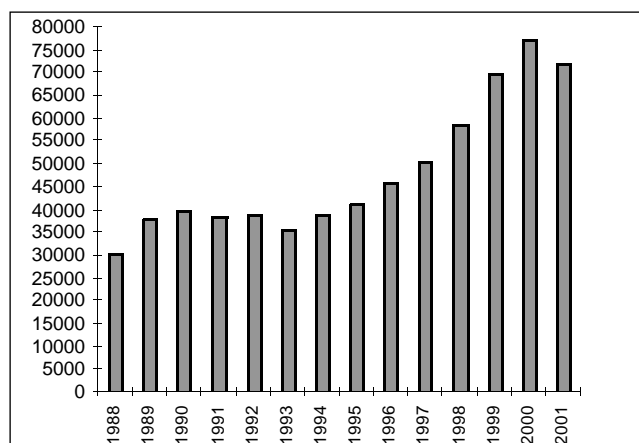
In addition, the Act contains radical measures to enhance the role of planning authorities in the provision of housing. Housing strategies must now be prepared for all local authority areas. These will provide an estimate of the need for all types of housing, including social and affordable housing, for the population in each area. Having estimated local needs for housing, a proportion, up to a maximum of 20%, of residentially zoned land in each area must be reserved by the local authority for the provision of social and affordable housing. This part of the Act was referred to the Supreme Court to determine its constitutionality, which was upheld in August 2000.

The Act is being brought into force in stages. Some priority provisions commenced by the end of 2000 include those on the supply of housing, on strategic development zones and on the transfer of the Minister's statutory functions to An Bord Pleanála.

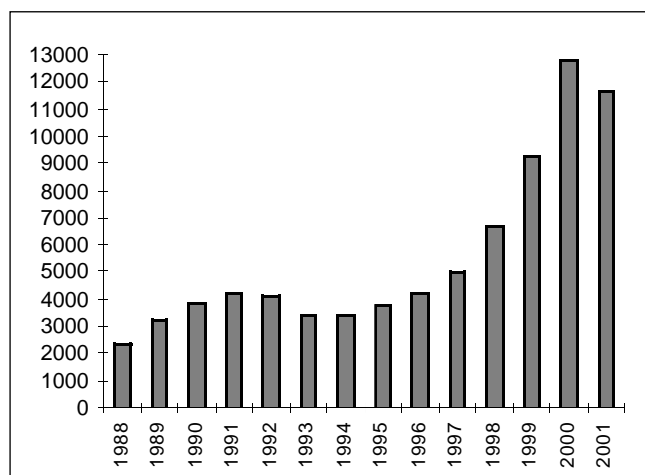
Figure 1: Planning Applications, Decisions, Refusals & Appeals



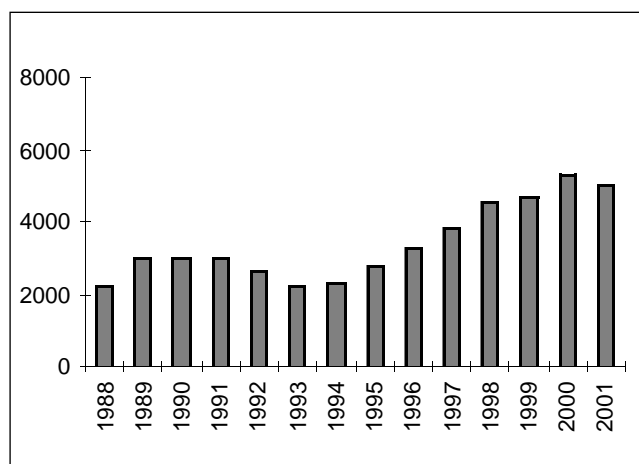
APPLICATIONS



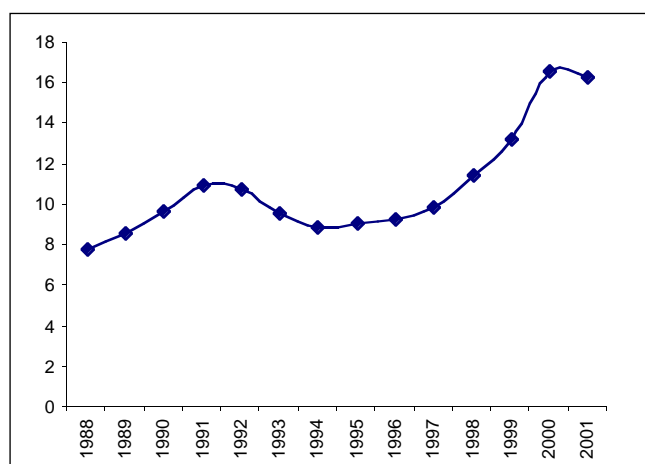
DECISIONS



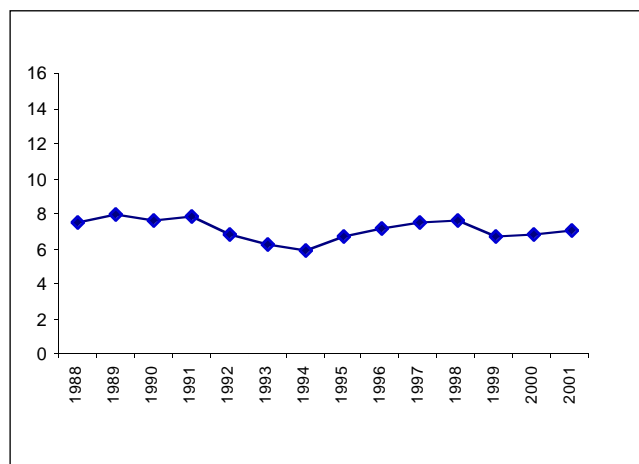
REFUSALS



APPEALS



REFUSAL RATE
(refusals as % of decisions)



APPEAL RATE
(appeals as % of decisions)

I Planning Applications

Tables 1, 2, 3 and 4

In the ten year period from 1990 to 2000 the number of planning applications made to local authorities almost doubled. The number of planning applications in 2001 was 75,786 which represented a reduction of 12.6% compared with 2000.

Since 1982, permissions for which development had not taken place within five years become invalid. This probably had the effect of reducing the number of 'speculative' (and perhaps not genuine) applications. There was a further structural change during 1983 when planning fees were introduced for the first time.

In the subsequent years up to 1993 the figures fluctuated between thirty three thousand and just over forty thousand. Between 1994 and 2000 there was a constant rise in the figures giving a cumulative increase of over one hundred per cent in the seven year period.

Table 4 gives the number of refusals and the (so-called) 'refusal rates'. The percentage of planning decisions that consist of a refusal (the refusal rate) had shown a consistent decline from 15.1 per cent in 1981 to 7.4 per cent in 1986. Between 1987 and 1997, apart from 1988, the rate fluctuated between 8 and 11 per cent. The rate for 1998 was 11.5 per cent, in 1999 the rate increased to 13.3 per cent, and in 2000 it further increased to 16.6 per cent. The refusal rate rose slightly to 16.9 per cent in 2001.

The refusal rate is not an indicator of the proportion of applications that end up as refusals, nor should it be regarded as an indicator of the 'efficiency' or 'commitment' of any individual planning authority. Higher refusal rates might be expected, for example, in areas of high amenity value or in areas under intensive pressures for speculative development.

Some of the above trends are graphically presented in Figure 1.

Table 1: Planning Applications, Decisions and Refusals

Year	Planning applications	Planning decisions	Refusals	Refusal rate ¹
1977	44 691	40 873	4 673	11.4
1978	54 223	46 655	5 636	12.1
1979	57 060	55 062	6 872	12.5
1980	50 138	47 207	6 162	13.1
1981	53 890	48 367	7 318	15.1
1982	48 855	48 234	7 242	15.0
1983	39 569	37 290	4 890	13.1
1984	33 018	31 145	3 117	10.0
1985	33 649	31 264	2 992	9.6
1986	38 971	35 447	2 624	7.4
1987	33 472	31 988	2 742	8.6
1988	33 564	30 305	2 350	7.8
1989	41 924	38 018	3 293	8.6
1990	43 378	39 698	3 866	9.7
1991	41 996	38 450	4 234	11.0
1992	41 711	38 785	4 197	10.8
1993	39 486	35 539	3 428	9.6
1994	42 318	38 849	3 456	8.9
1995	45 261	41 282	3 773	9.1
1996	50 732	46 015	4 278	9.3
1997	55 929	50 427	5 008	9.9
1998	67 075	58 634	6 730	11.5
1999	80 261	69 869	9 274	13.3
2000	85 300	77 295	12 810	16.6
2001	75 786	71 890	12 128	16.9

Note 1: Number of decisions to refuse permission as a percentage of the total number of decisions

Table 2: Planning Applications by area

Area	1996	1997	1998	1999	2000	2001	(%) Change '00 to '01
Carlow	623	637	810	985	1 004	912	(10.0)
Cavan	903	991	1 293	1 696	2 311	1 835	(12.2)
Clare	1 831	1 957	2 342	2 842	2 954	2 449	(14.3)
Cork	5 227	5 572	6 227	7 717	11 558	8 152	(11.1)
Donegal	2 520	2 831	3 652	5 520	5 930	4 744	(24.7)
Dun Laoghaire/Rathdown	1 683	1 851	2 176	2 335	2 317	1 965	(17.9)
Fingal	1 633	1 815	2 088	2 520	2 284	2 201	(2.2)
Galway	3 160	3 833	4 886	5 588	6 195	5 549	(11.0)
Kerry	2 811	3 095	3 638	4 117	4 710	4 473	(2.0)
Kildare	1 882	2 060	2 574	2 618	2 768	2 548	(8.5)
Kilkenny	1 277	1 355	1 531	2 079	2 361	1 875	(16.6)
Laois	814	812	1 153	1 504	1 337	1 083	(24.8)
Leitrim	427	575	729	922	1 246	1 009	(23.0)
Limerick	1 794	1 899	2 133	2 639	2 924	2 629	(8.1)
Longford	524	498	557	813	940	955	5.0
Louth	1543	1 592	1 897	2 395	2 259	1 864	(18.0)
Mayo	2 409	2 679	3 377	3 618	3 605	3 296	(9.2)
Meath	1 654	2 021	2 442	2 767	2 851	2 521	(10.9)
Monaghan	925	1 040	1 083	1 315	1 593	1 326	(17.2)
Offaly	864	979	1 195	1 678	1 558	1 374	(12.7)
Roscommon	885	986	1 258	1 479	2 023	1 772	(14.3)
Sligo	942	946	1 172	1 309	1 483	1 257	(17.3)
South Dublin	1 249	1 198	1 651	1 758	1 681	1 485	(10.8)
Tipperary NR	900	1 028	1 216	1 609	1 731	1 505	(9.6)
Tipperary SR	1 070	1 146	1 331	1 707	1 701	1 558	(9.3)
Waterford	898	1 053	1 302	1 496	1 650	1 551	(8.4)
Westmeath	1 135	1 339	1 532	1 895	1 867	1 467	(24.7)
Wexford	2 207	2 451	3 146	4 097	4 820	4 021	(18.6)
Wicklow	1 541	1 864	2 156	2 295	2 215	2 007	(11.4)
Sub-total	45 331	50 106	60547	73 313	81 876	69 383	(12.6)
Cork	796	891	982	1 055	1 071	928	(12.1)
Dublin	2 945	3 248	3 782	4 064	4 562	3 864	(10.9)
Galway	851	855	912	864	823	774	(16.0)
Limerick	408	431	463	452	446	422	(4.5)
Waterford	401	401	389	513	522	415	(21.4)
Sub-total	5 401	5 826	6 528	6 948	7 424	6 403	(11.9)
Total	50 732	55 929	67 075	80 261	89 300	75 786	(12.6)

Table 3: Planning Decisions by Area

Area	1996	1997	1998	1999	2000	2001	% Change '00 to '01
Carlow	578	591	680	862	939	922	-1.8
Cavan	860	939	1 224	1482	2 087	2 054	-1.6
Clare	1 516	1 658	1 914	2 356	2 675	2 352	-13.7
Cork	4 870	5 113	5 391	6 736	7 297	7 075	-3.1
Donegal	2 320	2 476	3 238	4 584	5 393	4 371	-23.4
Dun Laoghaire/Rathdown	1 544	1 777	2 073	2 169	2 263	1 963	-15.3
Fingal	1 486	1 673	2 003	2 382	2 211	2 124	-4.1
Galway	2 969	3 371	4 471	4 750	5 351	4 844	-10.5
Kerry	2 668	2 921	3 298	3 756	4 288	4 667	8.1
Kildare	1 612	1 727	1 917	2 264	2 451	2 257	-8.6
Kilkenny	1 100	1 303	1 336	1 753	2 227	1 771	-25.7
Laois	725	759	991	1 304	1 266	950	-33.3
Leitrim	451	492	577	844	1 016	939	-8.2
Limerick	1 605	1 703	1 859	2 327	2 373	2 493	4.8
Longford	443	482	476	637	846	853	0.8
Louth	1 310	1 425	1 552	1 941	1 972	2 169	9.1
Mayo	2 010	2 247	2 721	2 895	3 452	3 260	-5.9
Meath	1 507	1 711	2 168	2 397	2 566	2 622	2.1
Monaghan	833	936	914	1 112	1 383	1 297	-6.6
Offaly	715	851	963	1 412	1 422	1 343	-5.9
Roscommon	750	846	1 047	1 250	1 673	1 564	-7.0
Sligo	798	787	1 003	1 125	1 235	1 076	-14.8
South Dublin	1 160	1 409	1 509	1 638	1 481	1 442	-2.7
Tipperary NR	852	987	1 160	1 427	1 451	1 310	-10.8
Tipperary SR	1 008	1 053	1 200	1 536	1 580	1 445	-9.3
Waterford	834	978	1 184	1 319	1 471	1 480	0.6
Westmeath	1 057	1 192	1 354	1 627	1 692	1 523	-11.1
Wexford	2 025	2 104	2 798	3 697	4 420	3 897	-13.4
Wicklow	1 382	1 586	1 802	1 932	1 943	1 718	-13.1
Sub-total	40 988	45 097	52 823	63 514	70 424	65 781	-7.1
Cork	781	808	911	970	1 004	859	-16.9
Dublin	2 634	3 075	3 429	3 825	4 190	3 658	-14.5
Galway	844	658	698	660	809	755	-7.2
Limerick	407	406	397	448	410	414	1.0
Waterford	361	383	376	452	483	423	-14.2
Sub-total	5 027	5 330	5 811	6 355	6 896	6 109	-12.9
Total	46 015	50 427	58 634	69 869	77 320	71 890	-7.6

Table 4: Refusals and Refusal Rate by Area

Area	1999		2000		2001		Rate Change from 2000 to 2001
	Refusals	Rate	Refusals	Rate	Refusals	Rate	
Carlow	72	8.4	158	16.8	119	12.9	(3.9)
Cavan	87	5.9	230	11.0	278	13.5	2.5
Clare	105	4.5	454	17.0	329	14.0	(3.0)
Cork	889	13.2	1 378	18.9	1 503	21.2	2.3
Donegal	792	17.3	929	17.2	614	14.0	(3.2)
Dun Laoghaire/Rathdown	382	17.6	344	15.2	320	16.3	1.1
Fingal	538	22.6	529	23.9	485	22.8	(1.1)
Galway	607	12.8	774	14.5	571	11.8	(2.7)
Kerry	438	11.7	817	19.1	934	20.0	0.9
Kildare	258	11.4	251	10.2	327	14.5	4.3
Kilkenny	232	13.2	442	19.8	370	20.9	1.1
Laois	244	18.7	258	20.4	233	24.5	4.1
Leitrim	61	7.2	86	8.5	89	9.5	1.0
Limerick	251	10.8	266	11.2	234	9.4	(1.8)
Longford	68	10.7	162	19.1	130	15.2	(3.9)
Louth	134	6.9	330	16.7	428	19.7	3.0
Mayo	331	11.4	428	12.4	291	8.9	(3.5)
Meath	551	23.0	633	24.7	591	22.5	(2.2)
Monaghan	101	9.1	226	16.3	241	18.5	2.2
Offaly	243	17.2	274	19.3	306	22.7	3.4
Roscommon	113	9.0	180	10.8	235	15.0	4.2
Sligo	100	8.9	206	16.7	217	20.2	3.5
South Dublin	334	20.4	328	22.1	263	18.2	(3.9)
Tipperary NR	175	12.3	177	12.2	130	9.9	(2.3)
Tipperary SR	95	6.2	138	8.7	216	14.9	6.2
Waterford	107	8.1	141	9.6	170	11.5	1.9
Westmeath	202	12.4	336	19.9	280	18.4	(1.5)
Wexford	603	16.3	937	21.2	978	25.1	3.9
Wicklow	357	18.5	412	21.2	381	22.2	1.0
Sub-total	8 470	13.3	11 824	16.8	11 263	17.1	0.3
Cork	129	13.3	163	16.2	85	9.9	(6.3)
Dublin	496	13.0	636	15.2	571	15.6	0.4
Galway	95	14.4	107	13.2	82	10.9	(2.3)
Limerick	43	9.6	41	10.0	59	14.3	4.3
Waterford	41	9.1	39	8.1	68	16.1	8.0
Sub-total	804	12.7	986	14.3	865	14.2	(0.1)
Total	9 274	13.3	12 810	16.6	12 128	16.9	(0.3)

Tables 5, 6, 7 and 8

In 2001, 5,219 planning decisions were the subject of an appeal to An Bord Pleanála - a decrease of 1.6% over the previous year. The figure does not include reactivated appeals. A considerable number of appeals - approximately 27% of the total - were disposed of without a formal decision (withdrawn, invalid, etc.). In 2001 the number of formal decisions amounted to 3,829.

Table 8 (which is obtained in full from the annual report of An Bord Pleanála) shows the breakdown of appeal decisions in three categories: reversed, varied and confirmed. Slightly more than one in four appeals leads to a reversal of the local authority decision. This information is not available for individual authorities.

Table 5: Planning Decisions and Appeals¹

Year	Planning decisions	Appeals made	Appeal decisions	Appeals made as percentage of planning decisions
1988	30 305	2 257	1 955	7.5
1989	38 018	3 043	1 811	8.0
1990	39 698	3 038	2 732	7.7
1991	38 450	3 050	2 511	7.9
1992	38 785	2 671	2 473	6.9
1993	35 539	2 249	2 033	6.3
1994	38 849	2 331	1 802	6.0
1995	41 282	2 777	2 064	6.7
1996	46 015	3 319	2 540	7.2
1997	50 427	3 845	2 902	7.6
1998	58 634	4 533	3 154	7.7
1999	69 869	4 706	3 697	6.7
2000	77 320	5 306	3 801	6.9
2001	71 890	5 219	3 829	7.3

Note 1: Source - An Bord Pleanála

Table 6: Planning Decisions and Appeals in 2001 by Area

Area	Planning Decisions	Appeals Made	Appeals made as % of Planning Decisions
Carlow	922	49	5.3
Cavan	2 054	85	4.1
Clare	2 352	156	6.6
Cork	7 075	508	7.2
Donegal	4 371	169	3.9
Dun Laoghaire -Rathdown	1 963	377	19.2
Fingal	2 124	317	14.9
Galway	4 844	185	3.8
Kerry	4 667	228	4.9
Kildare	2 257	205	9.1
Kilkenny	1 771	99	5.6
Laois	950	63	6.6
Leitrim	939	40	4.3
Limerick	2 493	96	3.9
Longford	853	34	4.0
Louth	2 169	126	5.8
Mayo	3 260	134	4.1
Meath	2 622	186	7.1
Monaghan	1 297	54	4.2
Offaly	1 343	84	6.3
Roscommon	1 564	99	6.3
Sligo	1 076	70	6.5
South Dublin	1 442	192	13.3
Tipperary N.R.	1 310	75	5.7
Tipperary S.R.	1 445	110	7.6
Waterford	1 480	99	6.7
Westmeath	1 523	72	4.7
Wexford	3 897	163	4.2
Wicklow	1 718	222	12.9
Sub-total	65 781	4 297	6.5
Cork	859	109	12.7
Dublin	3 658	662	18.1
Galway	755	96	12.7
Limerick	414	24	5.8
Waterford	423	31	7.3
Sub-total	6 109	922	15.1
Total	71 890	5 219	7.3

Table 7: Appeals Made by Area

Area	1996	1997	1998	1999	2000	2001
Carlow	13	29	38	49	59	49
Cavan	25	35	54	50	72	85
Clare	60	97	105	107	176	156
Cork	299	327	387	431	510	508
Donegal	81	91	124	203	177	169
Dun Laoghaire/Rathdown	236	264	309	334	376	377
Fingal	253	229	281	296	318	317
Galway	154	166	224	197	191	185
Kerry	148	193	179	188	230	228
Kildare	135	134	144	158	176	205
Kilkenny	66	79	79	85	98	99
Laois	29	34	50	80	84	63
Leitrim	12	19	31	35	33	40
Limerick	47	78	96	123	132	96
Longford	15	28	34	27	55	34
Louth	90	100	106	103	142	126
Mayo	94	135	161	162	175	134
Meath	102	117	156	135	136	186
Monaghan	43	39	44	36	58	54
Offaly	34	36	51	65	86	84
Roscommon	35	45	53	56	63	99
Sligo	41	38	42	54	51	70
South Dublin	140	154	191	190	214	192
Tipperary NR	38	51	81	106	77	75
Tipperary SR	35	43	53	63	81	110
Waterford	30	47	65	47	92	99
Westmeath	51	74	71	65	84	72
Wexford	89	89	116	135	136	163
Wicklow	161	192	226	218	228	222
Sub-total	2 556	2 973	3551	3798	4 310	4 297
Cork	74	88	118	93	128	109
Dublin	526	612	662	618	654	662
Galway	110	106	139	128	129	96
Limerick	31	35	31	40	43	24
Waterford	22	31	32	29	42	31
Sub-total	763	872	982	908	996	922
Total	3 319	3 845	4533	4706	5 306	5 219

Source: An Bord Pleanála

Table 8: Consistency of Planning Decisions in Appeal Cases (Section 26)

Year	Decision of Planning Authority		
	Reversed	Varied	Confirmed
	%	%	%
1991	615 (24.5)	762 (30.3)	1 134 (45.2)
1992	598 (24.2)	676 (27.3)	1 199 (48.5)
1993	496 (24.4)	675 (33.2)	862 (42.4)
1994	418 (23.2)	652 (36.2)	732 (40.6)
1995	478 (23.2)	746 (36.1)	840 (40.7)
1996	582 (22.9)	915 (38.0)	1 043 (41.1)
1997	659 (22.9)	992 (34.5)	1 222 (42.5)
1998	664 (21.5)	1 143 (37.1)	1 276 (41.4)
1999	895 (24.6)	1 212 (33.3)	1 530 (42.1)
2000	1 010 (27.1)	1 170 (31.4)	1 546 (41.5)
2001	1 123 (29.3)	1 158 (30.3)	1 547 (40.4)

Source: An Bord Pleanála

Tables 9, 10, 11 and 12

Over ten years applications for outline permission accounted for about one in ten of all applications. In 2000 these applications remained at just over 15% of the total and decreased to 13% of this level during 2001. It should be noted that the use of outline applications is relatively frequent in some authorities while the average for the 5 County Borough Councils is 2.4%. The ratio of applications for approval to those for outline permissions is approximately 1:5. This would appear to indicate that little use is made of the provision in the Planning Act which enables an applicant who has obtained an outline permission to make that permission operational by the granting of an approval. It therefore appears likely that most outlines are followed up by an application for permission (rather than approval) or that they are not followed up at all.

Table 12 shows that the 'refusal rate' for outline permissions - at approximately 33% - is almost twice the average rate. The refusal rate for approvals is approximately one sixth of the average rate. It should also be noted that while outline permissions deferred are 20% of all deferrals (Table 13), more than 50% of all outline applications are deferred.

Table 9: Planning Applications by Type of Application

Year	Type of Application			Total
	Outline Perm	Approval	Permission	
1991	4 486 (10.7)	773 (1.8)	36 737 (87.5)	41 996
1992	4 510 (10.8)	799 (1.9)	36 402 (87.3)	41 711
1993	4 048 (10.3)	822 (2.0)	34 616 (87.7)	39 486
1994	3 910 (9.2)	1 023 (2.4)	37 394 (88.4)	42 318
1995	4 225 (9.3)	1 052 (2.3)	39 984 (88.3)	45 261
1996	4 556 (9.0)	1 228 (2.4)	44 948 (88.6)	50 732
1997	5 877 (10.5)	1 431 (2.6)	48 261 (86.9)	55 929
1998	8 068 (12.0)	1 932 (2.9)	57 075 (85.1)	67 075
1999	12 206 (15.2)	2 494 (3.1)	65 561 (81.7)	80 261
2000	13 690 (15.3)	3 179 (3.6)	72 431 (81.1)	89 300
2001	9 857 (12.7)	2 957 (3.8)	64 972 (83.5)	77 786

Table 10: Planning Applications by Area and by Type 2001

Area	Outline	%	Approval	%	Perm'sn	%	Total
Carlow	41	4.4	42	4.5	856	91.2	939
Cavan	316	16.0	68	3.4	1 591	80.6	1 975
Clare	393	15.1	168	6.4	2 047	78.5	2 608
Cork	1 147	15.2	182	2.4	6 222	82.4	7 551
Donegal	905	18.9	324	6.8	3 562	74.3	4 791
Dun Laoghaire/Rathdown	64	3.2	11	0.5	1 937	96.3	2 012
Fingal	70	3.2	19	0.9	2 111	96.0	2 200
Galway	1 077	19.7	230	4.2	4 149	76.0	5 456
Kerry	1 170	24.2	390	8.1	3 266	67.7	4 826
Kildare	73	2.8	21	0.8	2 488	96.4	2 582
Kilkenny	231	11.8	62	3.2	1 659	85.0	1 952
Laois	138	12.2	62	5.5	929	82.3	1 129
Leitrim	229	22.9	37	3.7	736	73.5	1 002
Limerick	398	14.6	105	3.9	2 224	81.6	2 727
Longford	158	16.8	37	3.9	746	79.3	941
Louth	320	14.3	152	6.8	1 768	78.9	2 240
Mayo	508	12.0	182	4.3	3 555	83.7	4 245
Meath	58	2.1	15	0.6	2 636	97.3	2 709
Monaghan	233	17.6	32	2.4	1 061	80.0	1 326
Offaly	198	13.3	104	7.0	1 184	79.7	1 486
Roscommon	383	21.9	113	6.5	1 253	71.6	1 749
Sligo	183	14.3	41	3.2	1 052	82.4	1 276
South Dublin	55	3.5	9	0.6	1 503	95.9	1 567
Tipperary NR	341	22.7	100	6.6	1 064	70.7	1 505
Tipperary SR	229	14.7	91	5.9	1 233	79.4	1 553
Waterford	305	19.5	73	4.7	1 189	75.9	1 567
Westmeath	105	7.0	81	5.4	1 305	87.5	1 491
Wexford	320	7.9	165	4.1	3 568	88.0	4 053
Wicklow	72	3.6	14	0.7	1 898	95.7	1 984
Sub-total	9 720	13.6	2 930	4.1	58 792	82.3	71 442
Cork	20	2.1	2	0.2	929	97.7	951
Dublin	78	2.0	16	0.4	3 744	97.6	3 838
Galway	13	1.9	2	0.3	678	97.8	693
Limerick	5	1.2	3	0.7	414	98.1	422
Waterford	21	4.8	4	0.9	415	94.3	440
Subtotal	137	2.2	27	0.4	6 180	97.4	6 344
Total	9 857	12.7	2 957	3.8	64 972	83.5	77 786

Table 11: Planning Decisions by Type of Application

Year	Type of Application		Approval	Permission	Total		
	Outline Permission						
1991	3 842	(10.0)	664	(1.7)	33 942	(88.3)	38 448
1992	3 697	(9.5)	742	(1.9)	34 346	(88.6)	38 785
1993	3 299	(9.3)	681	(1.9)	31 559	(88.8)	35 539
1994	3 325	(8.6)	895	(2.3)	34 629	(89.1)	38 849
1995	3 539	(8.6)	942	(2.3)	36 801	(89.1)	41 282
1996	3 876	(8.4)	1 085	(2.4)	41 058	(89.2)	46 015
1997	4 741	(9.4)	1 295	(2.6)	44 390	(88.0)	50 426
1998	6 337	(10.8)	1 691	(2.9)	50 606	(86.3)	58 634
1999	9 512	(13.6)	2 190	(3.1)	58 167	(83.3)	69 869
2000	11 829	(15.3)	2 759	(3.7)	62 707	(81.1)	77 295
2001	9 223	(12.8)	2 719	(3.8)	59 948	(83.4)	71 890

Table 12: Refusals as a Percentage of Decisions by Type of Application

Year	Type of Application		Permission	All Types
	Outline Permission	Approval		
1991	29.6	2.7	9.1	11.0
1992	30.9	2.3	8.8	10.8
1993	27.7	2.2	7.9	9.6
1994	23.4	2.9	7.5	8.9
1995	24.3	2.3	7.9	9.1
1996	24.0	2.7	8.1	9.3
1997	24.9	2.6	8.5	9.9
1998	26.2	1.1	13.3	11.5
1999	28.5	1.7	11.2	13.3
2000	32.6	2.8	17.9	16.6
2001	33.7	2.4	14.9	16.9

Tables 13, 14 and 15

A decision on a planning application must be made by the planning authority within a period of two months. This period can be extended in two ways.

The first occurs when a planning authority requests additional information (S26 of the 1963 Act, Art. 33 of the 1994 Regulations). A second procedure, requiring the written consent of the applicant, allows the planning authority to extend the two-month period. This provision was introduced in the 1976 Act (Table 15).

Table 14 gives the total figures for both procedures. Table 15 gives the figures for the extension provision introduced in the 1976 Act.

In 1989 and in previous years deferred applications referred only to those arising from 'request for further information'. From 1990 onwards 'deferrals' also include cases dealt with under this second procedure.

Deferrals arising from the 1976 Act are increasing as a percentage of total deferrals: 1996: 14%; 1997:20%; 1998:24%; 1999: 23%; 2000: 30%; 2001: 26%

Table 13: Applications Deferred by Type of Application

Year	Type of Application ¹						Total
	Outline Permission		Approval		Permission		
		%		%		%	
1991	1 786	(14.4)	155	(1.3)	10 444	(84.3)	12 798
1992	1 890	(15.2)	169	(1.4)	10 399	(83.5)	12 458
1993	1 651	(15.7)	218	(2.1)	8 651	(82.2)	10 520
1994	1 536	(13.6)	266	(2.4)	9 471	(84.0)	11 273
1995	1 628	(13.2)	239	(1.9)	10 432	(84.8)	12 299
1996	1 972	(13.3)	307	(2.1)	12 559	(84.6)	14 838
1997	2 438	(14.7)	351	(2.1)	13 816	(83.2)	16 605
1998	3 193	(15.4)	447	(2.2)	17 061	(82.4)	20 701
1999	5 179	(18.9)	660	(2.4)	21 613	(78.7)	27 452
2000	5 934	(19.9)	889	(3.0)	22 993	(77.1)	29 816
2001	4 742	(15.5)	1 041	(3.4)	24 853	(81.1)	30 636

Note 1: *The figures for the categories outline permission, approval and permission for 1991 underestimated the real figures and did not add up to the total number of deferred applications because of data missing for certain planning authorities.*

Table 14: Applications Deferred as Percentage of Applications ¹

Area	Deferred total 2000	Deferral rate	Deferred total 2001	Deferral rate	Change in rate '00 to '01
Carlow	400	39.9	247	27.1	(12.8)
Cavan	735	35.7	584	31.8	(3.9)
Clare	1 172	41.9	1 187	48.5	6.6
Cork	2 305	25.4	4 313	52.9	27.5
Donegal	1 976	33.4	1 949	41.1	7.7
Dun Laoghaire/Rathdown	458	19.8	398	20.3	(0.5)
Fingal	591	26.3	632	28.7	2.4
Galway	2 215	36.0	1 867	33.6	(2.4)
Kerry	1 477	32.4	1 521	34.0	1.6
Kildare	1 337	48.4	1 324	52.0	3.6
Kilkenny	947	43.3	917	48.9	5.6
Laois	600	44.4	598	55.2	10.8
Leitrim	411	33.1	413	40.9	7.8
Limerick	1 478	52.0	1 451	55.2	3.2
Longford	310	34.2	308	32.3	(1.9)
Louth	933	42.4	830	44.5	2.1
Mayo	1 525	42.4	1 210	36.7	(5.7)
Meath	841	30.1	650	25.8	(4.3)
Monaghan	778	50.1	683	51.5	1.4
Offaly	734	47.4	713	51.9	4.5
Roscommon	718	35.4	1 150	64.9	29.5
Sligo	310	21.0	280	22.3	1.3
South Dublin	591	35.9	633	42.6	6.7
Tipperary NR	674	40.8	615	40.9	0.1
Tipperary SR	451	26.5	518	33.2	6.7
Waterford	566	33.7	631	40.7	7.0
Westmeath	861	47.0	610	41.6	(5.4)
Wexford	1 795	37.6	1 970	49.0	11.4
Wicklow	954	41.7	787	39.2	(2.5)
Sub-total	28 143	36.0	28 989	41.8	5.8
Cork	165	15.9	249	26.8	10.9
Dublin	681	15.9	947	24.5	8.6
Galway	198	22.0	90	11.6	(10.4)
Limerick	144	32.7	212	50.2	17.5
Waterford	102	20.2	149	35.9	15.7
Sub-total	1 290	18.0	1 647	25.7	7.7
Total	29 433	34.5	30 636	40.4	6.0

Note 1: See text in introduction to table. This table should be read in conjunction with the following Table 15. The data in Table 15 are incorporated in the figures in this table.

Table 15: Applications where Consideration Time has been Extended (S26(4A) of 1963 Act as amended)

Area	1996	1997	1998	1999	2000	2001
Carlow	3	2	4	18	33	67
Cavan	6	6	5	16	26	52
Clare	148	115	134	214	406	539
Cork	428	489	417	606	48	773
Donegal	109	110	173	179	201	221
Dun Laoghaire/Rathdown	32	54	49	27	32	8
Fingal	103	333	132	708	591	632
Galway	142	255	339	505	690	644
Kerry	75	467	74	221	502	742
Kildare	54	227	541	856	1 932	691
Kilkenny	84	80	87	189	153	219
Laois	11	24	11	28	15	26
Leitrim	0	2	4	6	24	29
Limerick	54	32	74	130	0	126
Longford	2	12	14	6	0	39
Louth	62	89	145	201	224	145
Mayo	68	98	248	139	365	437
Meath	42	41	100	331	401	375
Monaghan	8	9	8	9	21	21
Offaly	9	7	32	52	77	51
Roscommon	8	18	56	111	128	99
Sligo	39	30	134	78	126	183
South Dublin	15	11	193	187	199	352
Tipperary NR	27	33	60	133	313	326
Tipperary SR	18	11	20	53	69	23
Waterford	7	17	14	21	39	25
Westmeath	12	127	430	161	844	249
Wexford	15	21	75	20	12	13
Wicklow	222	81	217	361	797	360
Sub-total	1 615	1854	4390	5566	8 268	7 467
Cork	51	113	63	47	0	0
Dublin	173	121	528	574	609	576
Galway	11	19	36	32	37	28
Limerick	10	12	11	17	25	21
Waterford	26	9	8	16	3	16
Sub-total	271	274	646	686	674	641
Total	1 886	2128	5 036	6252	8 942	8 108

Tables 16 and 17

Tables 16 and 17 give information on the use of procedures through which elected representatives can influence the planning control process: S4 of the City and County Management (Amendment) Act, 1955, and the procedure of material contravention of the development plan, as provided for in the 1976 Act.

While only limited use is made of these procedures overall, some authorities do use them to a considerable extent. The S4 procedure was used in 7 authorities. Five county authorities account for 96.9% of the total usage.

By virtue of section 26(3)(c) of the 1963 Act, a section 4 motion which, if passed, would result in a material contravention of the development plan, lapses and the material contravention procedures come into operation. Accordingly, those section 4 motions which have been superseded by the material contravention procedures are now listed separately. They then appear on the Council agenda as material contraventions.

Sections 44 and 45 of the Local Government Act, 1991 introduced changes in both procedures from 7 June 1991. In both cases a decision to grant planning permission requires the vote of not less than three quarters of the members of the Council in favour. 1995's figures for 'S4 Motions' showed an unprecedented reduction of 58.5 per cent, and this figures did not change substantially in 1996. There were only minor changes in the numbers of S4 on the agenda during 1997 and 1998. There was however an increase of over 50% (15 instances) in 1999. The increase in the number of 'material contraventions' was in the order of ten per cent. A dramatic increase (72% or 34 instances) in the number of S4 on the agenda was evident in 2000. This fell significantly (by 21% or 17 instances) to 64 cases in 2001. However, the increase in the number of 'material contraventions' resulting from Section 4 motions in 2000 was 27% or 6 instances (i.e. a total of 28 material contraventions in 2000). This fell significantly to only 10 material contraventions resulting from Section 4 motions in 2001. The overall number of material contraventions passed by local authorities in 2000 was 132. This represented a 4.3% decrease on the 138 material contraventions passed in 1999. In 2001 93 material contraventions were passed by local authorities, i.e. a 30% reduction on the 2000 figure.

Table 16 Applications where either S4 Procedure or the Procedure for Material Contravention of the Development Plan was followed

Procedure	1995	1996	1997	1998	1999	2000	2001
- S4 Procedure							
• On Agenda	39	37	28	32	47	81	64
• Passed by Council	12	9	3	8	11	34	42
• Superseded by Material Contravention	16	18	18	20	22	28	10
- Material Contravention							
• Notice of Intention	84	95	106	142	156	141	108
• Passed by Council	74	82	88	122	138	132	93

Table 17: Applications where either S4 or Material Contravention Procedures were used

Area	SECTION 4 MOTIONS			MATERIAL CONTRAVENTIONS	
	Agenda	Passed	Superseded by Material Contravention	Agenda	Passed
Carlow	0	0	0	1	1
Cavan	0	0	0	0	0
Clare	0	0	0	4	3
Cork	0	0	0	7	0
Donegal	15	12	0	18	16
Dun Laoghaire/Rathdown	0	0	0	0	0
Fingal	0	0	0	0	0
Galway	0	0	0	16	16
Kerry	8	1	0	6	1
Kildare	0	0	0	7	7
Kilkenny	0	0	0	5	5
Laois	0	0	0	2	2
Leitrim	0	0	0	1	1
Limerick	0	0	0	1	1
Longford	0	0	0	0	0
Louth	6	1	4	2	2
Mayo	0	0	0	2	2
Meath	0	0	0	2	2
Monaghan	0	0	0	0	0
Offaly	0	0	0	1	1
Roscommon	0	0	0	3	3
Sligo	0	0	0	1	1
South Dublin	0	0	0	1	1
Tipperary Nr	1	0	1	1	1
Tipperary Sr	0	0	0	4	5
Waterford	0	0	0	1	1
Westmeath	0	0	0	18	18
Wexford	6	0	6	6	6
Wicklow	29	28	0	5	4
Subtotal	64	42	10	99	84
Cork	0	0	0	4	4
Dublin	0	0	0	0	0
Galway	0	0	0	3	3
Limerick	0	0	0	0	0
Waterford	0	0	0	2	2
Subtotal	0	0	0	9	9
Total	64	42	10	108	93

Tables 18 and 19

Table 18 provides information on the type of development applied for in planning applications. It is derived from the information on planning fees and the land use categories that are defined in the Local Government (Planning & Development) Regulations, 1994.

Tables 18 and 19 provide data on the number of applications in each fee class. Small discrepancies may occur between the total number of applications in these tables and the actual number presented in Table 2. This can be for a number of

reasons: certain applications are exempted from fees, other applications falling into different fee classes may have been counted more than once, and applications received in the earlier part of the year may have been withdrawn by year end.

In 2001 almost eight out of every ten applications were for residential development (class 1 and class 2 - dwelling houses and 'extensions').

Table 18: Planning Applications by Class of Development

Year	Class of development ¹															Total
	1	2	3	4	5	6	7	8	9	10	11	12	13	14	15	
1997	27 642	14 826	1 564	120	8 503	8	58	163	201	163	652	103	34	14	2 160	56 649
%	48.8	26.2	2.8	0.2	15.0	0.0	0.1	0.3	0.4	0.3	1.2	0.2	0.1	0.0	3.8	100.0
1998	35 832	16 618	1 178	219	9 076	8	88	163	229	163	564	131	92	10	2 324	66 557
%	53.8	25.0	1.8	0.3	13.6	0.0	0.1	0.2	0.3	0.2	0.9	0.2	0.1	0.0	3.5	100.0
1999	46 804	18 841	1 357	249	8 865	3	51	211	225	156	503	80	26	9	2 313	79 693
%	58.7	23.6	1.7	0.3	11.1	0.0	0.1	0.3	0.3	0.2	0.6	0.1	0.0	0.0	2.9	100.0
2000	54 594	18 610	971	300	8 529	10	57	200	261	104	523	98	21	12	3 050	87 340
%	62.5	21.3	1.1	0.3	9.8	0.0	0.1	0.2	0.3	0.1	0.6	0.1	0.0	0.0	3.5	100.0
2001	42 361	17 846	1 575	481	8 116	20	80	164	217	99	789	125	28	10	3 589	75 508
%	56.1	23.6	2.1	0.6	10.7	0.0	0.1	0.2	0.3	0.1	1.0	0.2	0.0	0.0	4.8	100.0

Table 19: Applications by Area and Class of Development 2001

Area	Class 1	Class 2	Class 3	Class 4	Class 5	Class 6	Class 7	Class 8
Carlow	454	238	43	6	125	0	2	1
Cavan	1 318	280	76	0	65	0	0	2
Clare	1 610	416	78	79	56	5	1	1
Cork	4 500	1 848	180	29	849	0	11	27
Donegal	3 356	730	60	10	403	0	4	27
Dun Laoghaire-Rathdown	473	1 062	2	3	299	0	0	2
Fingal	773	794	38	12	405	0	1	8
Galway	3 510	877	92	0	254	0	5	0
Kerry	3 031	789	123	0	218	0	0	6
Kildare	1 354	587	40	0	451	0	2	3
Kilkenny	1 060	443	107	116	44	6	8	3
Laois	606	296	25	5	130	0	1	1
Leitrim	684	203	14	2	70	0	1	1
Limerick	1 673	517	85	0	137	0	5	9
Longford	655	159	31	0	37	0	0	0
Louth	964	482	30	1	324	0	0	9
Mayo	2 243	591	50	46	307	0	5	0
Meath	1 312	639	71	60	298	2	13	2
Monaghan	866	223	27	0	179	0	0	0
Offaly	945	228	21	44	70	0	0	4
Roscommon	1 234	251	49	2	139	1	0	0
Sligo	810	234	16	1	142	0	1	0
South Dublin	396	651	2	4	307	0	1	12
Tipperary N.R.	946	288	36	11	125	0	0	1
Tipperary S.R.	867	325	80	14	132	0	3	4
Waterford	930	366	39	11	106	1	3	1
Westmeath	723	413	29	0	211	0	6	0
Wexford	2 665	783	108	20	362	5	3	8
Wicklow	1 033	539	22	5	265	0	2	3
Sub-total	40 991	15 252	1 574	481	6 510	20	78	135
Cork	190	381	0	0	285	0	0	5
Dublin	819	1678	0	0	865	0	0	14
Galway	205	217	1	0	194	0	2	5
Limerick	70	175	0	0	120	0	0	3
Waterford	86	143	0	0	142	0	0	2
Sub-total	1 370	2 594	1	0	1 606	0	2	29
Total	42 361	17 846	1 575	481	8 116	20	80	164

Table 19: Applications by Area and Class of Development (Continued)

Area	Class 9	Class 10	Class 11	Class 12	Class 13	Class 14	Class 15	Total
Carlow	2	5	8	1	3	1	23	912
Cavan	2	6	5	2	0	0	79	1835
Clare	6	5	144	4	2	0	42	2449
Cork	74	7	41	8	4	1	397	7976
Donegal	10	10	30	2	1	0	101	4744
Dun Laoghaire-Rathdown	13	4	36	1	0	0	61	1956
Fingal	27	5	40	5	0	0	93	2201
Galway	1	0	1	0	0	0	809	5549
Kerry	0	5	18	1	0	0	282	4473
Kildare	2	4	15	10	0	0	63	2531
Kilkenny	5	0	42	30	2	1	8	1875
Laois	10	0	2	1	0	0	6	1083
Leitrim	0	2	1	1	0	0	30	1009
Limerick	4	4	5	9	0	3	170	2621
Longford	0	3	2	1	0	0	67	955
Louth	1	1	15	2	0	0	35	1864
Mayo	1	3	8	1	4	0	33	3296
Meath	11	1	3	4	1	0	104	2521
Monaghan	3	1	3	0	0	0	24	1326
Offaly	0	0	61	0	0	0	1	1374
Roscommon	0	3	0	11	1	0	81	1772
Sligo	0	2	3	17	0	0	31	1257
South Dublin	18	1	36	2	1	2	52	1485
Tipperary N.R.	2	1	8	0	0	0	80	1498
Tipperary S.R.	1	2	22	3	0	1	67	1525
Waterford	1	2	10	0	0	0	53	1523
Westmeath	0	2	8	1	1	0	73	1467
Wexford	3	1	14	0	4	1	44	4021
Wicklow	3	6	11	4	4	0	110	2007
Sub-total	200	86	592	121	28	10	3019	69105
Cork	2	4	10	2	0	0	49	928
Dublin	7	7	99	0	0	0	375	3864
Galway	1	2	50	2	0	0	95	774
Limerick	7	0	16	0	0	0	31	422
Waterford	0	0	22	0	0	0	20	415
Sub-total	17	13	197	4	0	0	570	6403
Total	217	99	789	125	28	10	3589	75508

Tables 20 and 21

Tables 20 and 21 list the total amount of development contributions which planning authorities receive through the procedure of levying charges in planning conditions (Section 26(2)(g) and (h) of the 1963 Act).

The amount received in contributions has continued to rise since 1987 with an exceptional decline of approximately 2.5 per cent between 1992 and 1993. There was an increase of approximately 26% for 1997, 15% in 1998, 31% in 1999, 27% in 2000 and 11% in 2001. Increases or decreases in the figures, may be the result of a number of factors such as changes in the rates charged, size and type of developments carried out in a particular year, the overall level of implementation of planning permissions and perhaps increased enforcement of planning conditions.

Table 20: Development Contributions

Year	Total Sum Received	
	£	€
1987	5 181 562	6 579 227
1988	6 450 699	8 190 698
1989	9 016 987	11 449 212
1990	10 690 887	13 574 626
1991	12 348 630	15 679 526
1992	15 895 196	20 182 736
1993	15 483 241	19 659 661
1994	20 544 507	26 086 143
1995	22 398 667	28 440 440
1996	36 179 998	45 939 121
1997	45 531 558	57 813 153
1998	52 236 043	66 326 093
1999	68 653 475	87 171 931
2000	86 931 438	110 380 157
2001	96 063 915	121 976 011

Table 21: Development Contributions by Area

Area	Contributions	
	2000	2001
Carlow	682 442	568 221
Cavan	772 067	776 320
Clare	1 053 642	1 057 098
Cork	7 955 605	7 721 135
Donegal	1 578 127	2 371 810
Dun Laoghaire-Rathdown	4 708 273	4 778 806
Fingal	10 720 725	11 628 092
Galway	2 247 997	2 905 003
Kerry	1 306 781	1 498 611
Kildare	5 063 000	4 787 398
Kilkenny	750 078	2 322 994
Laois	1 364 256	1 190 206
Leitrim	507 070	336 897
Limerick	1 285 378	1 793 612
Longford	527 674	682 425
Louth	3 363 571	4 075 039
Mayo	1 522 951	1 025 162
Meath	4 747 941	10 129 281
Monaghan	22 650	818 393
Offaly	1 111 588	774 792
Roscommon	924 582	629 131
Sligo	428 215	1 013 216
South Dublin	8 586 000	8 430 760
Tipperary N.R.	506 907	860 294
Tipperary S.R.	1 060 663	948 278
Waterford	1 590 085	1 306 790
Westmeath	1 530 093	1 628 654
Wexford	3 557 941	4 014 193
Wicklow	2 437 621	4 123 876
Sub-total	71 913 920	84 196 485
Cork	1 515 572	1 433 426
Dublin	8 319 470	5 990 809
Galway	2 774 821	3 005 142
Limerick	989 142	956 396
Waterford	1 418 513	481 656
Sub-total	15 017 518	11 867 430
Total	86 931 438	96 063 915

II Enforcement

Tables 22, 23, 24 and 24A

These tables give information on the number of enforcement cases under three principal procedures:

- Prosecution under Section 24 of the 1963 Act (as amended);
- Serving of an Enforcement Notice under Sections 31 and 35 as well as Sections 32, 36 and 37 of the 1963 Act;
- Serving of a Warning Notice under Section 26 of the 1976 Act (as amended).

Where S24 of the 1963 Act and S26 of the 1976 Act (both as amended) are concerned, convictions include both summary prosecution and prosecution on indictment. 'Cases initiated' under these sections include only those cases where legal proceedings have been brought, whereas under the other sections (i.e. enforcement notice) such cases refer to the number of notices that have been issued, not all of which would have necessitated further action in the courts.

Table 24A gives the figures for compliance with these notices and for which therefore no further action was required. This is the fifth year for which this information has been collected. As the issuing of the notice and the compliance with it need not necessarily take place within the same reporting year these tables will be better evaluated in the light of next year's returns.

Table 22: Enforcement Cases Initiated, by Procedure

Enforcement procedure	1996	1997	1998	1999	2000	2001
S24 1963 Act	40	20	6	27	59	32
S31 1963 Act	948	874	952	1 070	1 173	1 530
S32 1963 Act	4	1	6	14	12	26
S35 1963 Act	55	85	61	51	29	12
S36 1963 Act	0	0	0	0	0	0
S37 1963 Act	2	0	0	0	0	0
S26 1976 Act	379	293	272	234	381	244
Total	1 428	1 273	1 297	1 396	1 654	1844

Table 23: Enforcement Cases Convicted, by Procedure

Enforcement procedure	1996	1997	1998	1999	2000	2001
S24 1963 Act	10	3	3	2	22	4
S31 1963 Act	221	189	203	185	226	321
S32 1963 Act	1	0	0	0	0	6
S35 1963 Act	9	8	10	18	2	0
S36 1963 Act ¹	-	-	-	-	0	0
S37 1963 Act	2	0	0	0	0	0
S26 1976 Act	28	20	33	5	2	2
Total	271	220	249	210	252	333

Note 1: S36 makes no provision for conviction

Table 24: Enforcement Cases Initiated and Convicted by Area and Procedure in 2001

Area	S24/1963		S26/1976		S31/1963		S32/1963		S35/1963	
	I	C	I	C	I	C	I	C	I	C
Carlow	0	0	2	0	4	1	1	0	0	0
Cavan	3	0	10	0	2	0	0	0	0	0
Clare	5	3	8	0	58	9	0	0	0	0
Cork	0	0	3	0	19	4	0	0	0	0
Donegal	0	0	0	0	51	15	9	2	5	0
Dun Laoghaire-Rathdown	0	0	4	1	21	13	0	0	0	0
Fingal	0	0	12	0	107	31	0	0	0	0
Galway	0	0	9	1	136	36	0	0	0	0
Kerry	0	0	10	0	115	6	0	0	0	0
Kildare	1	0	16	0	11	0	0	0	0	0
Kilkenny	0	0	0	0	84	0	0	0	0	0
Laois	0	0	0	0	29	16	0	0	0	0
Leitrim	0	0	0	0	11	3	0	0	0	0
Limerick	3	0	4	0	14	4	0	0	0	0
Longford	0	0	0	0	4	0	0	0	0	0
Louth	0	0	6	0	148	37	0	0	0	0
Mayo	5	0	53	0	0	0	0	0	0	0
Meath	0	0	1	0	0	0	0	0	1	0
Monaghan	0	0	21	0	12	0	0	0	0	0
Offaly										
Roscommon	0	0	6	0	5	4	0	0	0	0
Sligo	0	0	2	0	30	4	0	0	2	0
South Dublin	0	0	5	0	137	8	0	0	1	0
Tipperary N.	0	0	1	0	1	0	0	0	2	0
Tipperary S.	0	0	4	0	53	3	2	0	1	0
Waterford	0	0	3	0	24	1	0	0	0	0
Westmeath	1	0	0	0	0	0	0	0	0	0
Wexford	0	0	4	0	161	59	0	0	0	0
Wicklow	0	0	49	0	75	7	0	0	0	0
Sub-total	18	3	233	2	1312	261	12	2	12	0
Cork	0	0	1	0	8	2	0	0	0	0
Dublin	0	0	1	0	32	4	0	0	0	0
Galway	5	0	9	0	154	50	0	0	0	0
Limerick	9	1	0	0	9	1	0	0	0	0
Waterford	0	0	0	0	15	3	14	4	0	0
Sub-total	14	1	11	0	218	60	14	4	0	0
Total	32	4	244	2	1530	321	26	6	12	0

I = Initiated and C = Convicted

Table 24A: Enforcement Notices - Compliance

Area	S31/1963	S32/1963	S35/1963	S36/1963	S37/1963
Carlow	2	0	10	0	0
Cavan	0	0	0	0	0
Clare	35	0	0	0	0
Cork	9	0	0	0	0
Donegal	17	0	0	0	0
Dun Laoghaire-Rathdown	7	0	0	0	0
Fingal	76	0	0	0	0
Galway	69	0	0	0	0
Kerry	57	0	1	0	0
Kildare	11	0	0	0	0
Kilkenny	32	0	0	0	0
Laois	7	0	0	0	0
Leitrim	5	0	0	0	0
Limerick	8	0	0	0	0
Longford	0	0	0	0	0
Louth	34	0	0	0	0
Mayo	0	0	0	0	0
Meath	0	0	1	0	0
Monaghan	0	0	0	0	0
Offaly	0	0	0	0	0
Roscommon	1	0	0	0	0
Sligo	5	0	0	0	0
South Dublin	64	0	0	0	0
Tipperary N.	0	0	0	0	0
Tipperary S.	4	2	0	0	0
Waterford	10	0	0	0	0
Westmeath	0	0	0	0	0
Wexford	42	0	0	0	0
Wicklow	21	0	0	0	0
Sub-total	516	2	12	0	0
Cork	4	0	0	0	0
Dublin	25	0	0	0	0
Galway	0	0	0	0	0
Limerick	8	0	0	0	0
Waterford	5	9	0	0	0
Sub-total	42	9	0	0	0
Total	558	11	12	0	0

Tables 25, and 26

The fourth principal enforcement procedure is based on the jurisdiction of the High Court and the Circuit Court to grant injunctions where unauthorised development is taking place. Not only the planning authority but any member of the public can make an application to the Court under Section 27 of the 1976 Act (as amended). The use of this procedure has therefore been separated into two categories: initiation by the planning authority and initiation by 'other bodies or individuals.'

As both statistics are based on figures provided by the planning authorities, the second category may be underestimated because the planning authority need not necessarily be aware of applications by third parties.

Table 25 Applications for Injunction Order to High Court S27 1976 Act (as amended)

Year	Applications by Planning Authority		Applications by Others	
	Number of applications	Number granted	Number of applications	Number granted
1993	35	19	5	2
1994	35	15	3	1
1995	66	20	2	2
1996	42	27	2	1
1997	29	17	0	0
1998	51	25	1	0
1999	53	26	1	1
2000	60	29	2	1
2001	146	68	5	1

Table 26 Applications for Injunction Order to Circuit Court

Year	Applications by Planning Authority		Applications by Others	
	Number of applications	Number granted	Number of applications	Number granted
1993	22	9	3	2
1994	30	16	2	2
1995	21	8	0	0
1996	37	17	2	2
1997	37	13	2	2
1998	52	31	2	0
1999	71	23	3	3
2000	66	27	5	4
2001	89	15	4	2

Data on applications to the Circuit Court were collected for 1992 for the first time when there was zero return.

III Fees and Administration

Tables 27, 28, 29, 30 and 31

The changes in fee class classification are noted in the introduction to Tables 18 and 19. Tables 27, 28 and 29 deal with planning application fees.

As in previous years, planning fees for Class 5 applications continued to be quite high. Class 5 continues to account for almost sixty per cent of fees.

Table 29 gives a detailed account of the fees received in each area specified by class of development (see Appendix A for the type of land use in each class). Tables 30 and 31 give the fees received under a number of other categories.

Table 27: Total Amount Received in Application Fees by Class of Development - with Percentage Breakdown*

2001	£S	Percentage	2001	£S	Percentage
Class 1	6 796 888	26.89	Class 9	59 899	0.24
Class 2	849 598	3.36	Class 10	81 905	0.32
Class 3	287 162	1.14	Class 11	394 273	1.56
Class 4	503 620	1.99	Class 12	20 452	0.08
Class 5	14 222 117	56.27	Class 13	15 230	0.06
Class 6	7 062	0.03	Class 14	1 374	0.01
Class 7	272 060	1.08	Class 15	1 675 283	6.63
Class 8	86 835	0.34			
Total				25 273 758	100

Table 28: Total Amount Received in Application Fees by Class of Development

Class of Development	1996 £	1997 £	1998 £	1999 £	2000 £	2001 £
2	385 744	460 395	531 920	646 980	1 005 617	849 598
3	203 303	173 389	154 390	205 930	166 372	287 162
4	103 373	20 538	131 433	128 635	312 441	503 620
5	7 216 525	9 164 623	11 806 166	13 611 842	14 230 814	14 222 117
6	22 044	777	1 103	550	12 031	7 062
7	75 528	93 706	141 404	149 618	86 520	272 060
8	46 985	54 651	114 923	130 804	66 387	86 835
9	44 376	65 128	88 702	47 918	58 129	59 899
10	48 963	54 688	58 730	72 078	63 341	81 905
11	129 750	113 263	119 754	124 393	106 714	394 273
Total	8 276 591	10 201 158	13 148 525	15 118 748	16 108 366	16 764 531

Table 29: Amount Received in Application Fees by Area and Class of Development

Area	Class 1	Class 2	Class 3	Class 4	Class 5	Class 6	Class 7	Class 8
Carlow	91 010	7 367	5 913	1 319	265 101	0	3 233	87
Cavan	161 365	9 150	13 996	0	48 902	0	0	18 056
Clare	143 691	16 545	7 477	37 021	79 351	997	47	24
Cork	654 688	79 666	28 629	1 199	1 338 168	0	35 747	3 033
Donegal	374 386	21 838	6 458	520	659 251	0	11 923	3 215
Dun Laoghaire-Rathdown	234 190	42 529	734	284	812 136	0	0	656
Fingal	388 887	27 940	14 737	2 019	1 278 747	0	381	8 644
Galway	329 313	139 535	10 880	0	396 072	0	20 665	0
Kerry	380 228	72 865	19 418	74	218 295	0	0	3 847
Kildare	479 853	29 991	27 914	0	953 229	0	7 811	19 230
Kilkenny	146 536	16 645	12 844	281 925	49 395	353	1 588	649
Laois	99 909	12 214	3 229	580	204 154	0	6 708	857
Leitrim	71 041	7 162	1 085	202	108 038	0	2 521	57
Limerick	234 414	15 531	11 761	0	198 771	0	4 764	2 085
Longford	168 408	28 232	4 677	0	81 293	0	0	0
Louth	160 325	16 719	22 921	157	397 423	0	0	1 089
Mayo	256 357	21 772	11 584	58 272	272 024	0	25 026	0
Meath	323 856	22 076	15 347	11 059	555 819	3 461	94 907	676
Monaghan	110 309	10 582	4 673	0	194 821	0	0	0
Offaly	174 065	8 801	3 091	96 474	65 557	0	0	6 205
Roscommon	107 284	8 138	5 833	145	230 389	116	0	0
Sligo	129 608	8 465	1 231	95	279 173	0	15 000	0
South Dublin	207 051	26 924	613	1 056	1 054 776	0	185	5 474
Tipperary N.R.	76 119	10 943	4 424	2 871	176 993	0	0	378
Tipperary S.R.	93 415	14 525	15 265	2 156	196 618	0	2 600	408
Waterford	101 683	12 276	9 327	2 402	107 060	218	2 148	292
Westmeath	113 291	17 334	4 572	0	318 347	0	15 309	0
Wexford	265 787	35 437	14 984	2 909	397 046	1 917	3 866	3 038
Wicklow	214 453	26 731	3 444	881	373 648	0	16 887	2 278
Sub-total	6 291 521	767 933	287 061	503 620	11 310 597	7 062	271 317	80 278
Cork	44 624	12 073	0	0	386 166	0	0	1 843
Dublin	283 801	48 319	0	0	1 830 032	0	0	1 876
Galway	89 399	10 057	101	0	297 036	0	743	1 149
Limerick	50 854	5 712	0	0	193 053	0	0	290
Waterford	36 689	5 504	0	0	205 233	0	0	1 399
Sub-total	505 367	81 665	101	0	2 911 520	0	743	6 557
Total	6 796 888	849 598	287 162	503620	14 222 117	7 062	272 060	86 835

Table 29: Amount Received in Application Fees by Area and Class of Development (Contd)

Area	Class 9	Class 10	Class 11	Class 12	Class 13	Class 14	Class 15	Fees Total
Carlow	365	2 565	1 385	58	1 108	146	7 562	387 219
Cavan	234	1 645	320	116	0	0	61 051	314 835
Clare	787	378	138 006	283	159	0	18 998	443 764
Cork	11 700	130	5 699	2 838	0	185	31 307	2 192 990
Donegal	6 850	24 106	2 862	619	200	0	102 610	1 214 839
Dun Laoghaire-Rathdown	2 853	1 090	13 840	74	0	0	10 889	1 119 275
Fingal	5 287	5 428	26 073	1 080	0	0	11 622	1 770 845
Galway	146	0	855	0	0	0	494 556	1 392 022
Kerry	0	2 322	3 907	60	883	0	124 818	826 717
Kildare	889	6 446	3 425	833	0	0	44 526	1 574 146
Kilkenny	3 131	0	5 308	2 875	1 905	18	918	524 090
Laois	1 965	0	101	58	0	0	2 188	331 963
Leitrim	0	734	58	109	0	0	19 657	210 664
Limerick	9 823	679	4 398	1 184	0	296	114 508	598 214
Longford	0	947	188	0	0	0	70 665	354 410
Louth	146	146	5 896	259	0	0	170 927	776 008
Mayo	328	10 155	477	2 066	3 023	0	21 307	682 391
Meath	2 580	252	5 133	816	2 017	0	15 007	1 053 006
Monaghan	320	601	277	0	0	0	2 181	323 764
Offaly	0	0	109 344	0	0	0	146	463 683
Roscommon	0	3 268	0	1 430	185	0	8 426	365 214
Sligo	0	2 434	563	3 175	0	0	10 998	450 742
South Dublin	5 311	259	17 013	171	51	291	14 050	1 333 225
Tipperary N.R.	292	219	2 251	0	0	0	17 836	292 326
Tipperary S.R.	557	922	2 713	761	0	185	24 861	354 986
Waterford	146	438	1 183	0	0	0	28 805	265 978
Westmeath	0	1 905	761	87	380	0	50 739	522 725
Wexford	350	930	1 161	0	1 655	253	3 012	732 344
Wicklow	363	7 709	1 132	1 071	3 664	0	82 674	734 935
Sub-total	54 423	75 709	354 329	20 022	15 230	1 374	1 566 844	21 607 319
Cork	576	3 876	2 389	285	0	0	22 905	474 737
Dublin	1 328	1 444	15 309	0	0	0	54 238	2 236 347
Galway	146	876	12 831	145	0	0	21 157	433 640
Limerick	3 426	0	4 537	0	0	0	6 811	264 683
Waterford	0	0	4 878	0	0	0	3 328	257 031
Sub-total	5 476	6 196	39 944	430	0	0	108 439	3 666 438
Total	59 899	81 905	394 273	20 452	15 230	1 374	1 675 283	25 273 757

Table 30: Fees Received Other than Application Fees by Area and by Type of Fee¹

Area	Extension	Register	Licence	Exemption	Compliance	Miscellaneous	Total £
Carlow	0	733	1 500	106	960	1 621	4 920
Cavan	45	0	1 257	0	0	3 804	5 106
Clare	1 222	0	262	0	0	1 960	3 444
Cork	355	23 425	9 831	1 982	437	3 354	39 384
Donegal	1 255	0	501 380	0	70	32 726	535 431
Dun Laoghaire-Rathdown	17 142	10 675	90	0	50	4 656	32 613
Fingal	27 940	5 990	0	0	0	64 409	98 339
Galway	0	0	111	0	0	335	446
Kerry	0	0	17 674	0	505	20 392	38 571
Kildare	1 013	445	132	0	29 300	1 429	32 320
Kilkenny	0	0	3 040	0	0	11 108	14 148
Laois	0	1 951	0	0	0	35 605	37 556
Leitrim	80	489	286	0	0	1 677	2 532
Limerick	588	2 210	3 110	187	0	55 345	61 440
Longford	90	0	0	0	0	3 400	3 490
Louth	285	80	3 909	120	0	24 669	29 063
Mayo	315	260	480	0	0	3 438	4 493
Meath	90	760	1 791	320	4 250	14 910	22 121
Monaghan	85	1 683	5 192	0	595	4 008	11 563
Offaly	0	110	5	0	437	980	1 532
Roscommon	0	0	5 931	0	0	8 009	13 940
Sligo	45	0	290	0	1 720	6 021	8 076
South Dublin	45	0	0	0	0	7 717	7 762
Tipperary N.	1 525	1 951	2 847	15	0	3 058	2 000
Tipperary S.	0	817	2 383	334	98	6 192	9 824
Waterford	0	0	4 609	0	0	11 156	15 765
Westmeath	0	1 800	6 824	0	2 361	1 221	12 206
Wexford	45	0	10 937	10	0	30 474	41 466
Wicklow	1 025	0	630	0	107	35 003	36 765
Sub-total	53 190	53 379	584 500	3 074	40 890	398 678	1 126 316
Cork	90	0	21 428	0	0	23 647	45 165
Dublin	315	7 033	0	0	0	22 237	29 585
Galway	135	0	300	0	0	26 132	26 567
Limerick	0	0	951	0	640	10 826	12 417
Waterford	0	0	965	0	4 717	713	6 395
Sub-total	540	7 033	23 644	0	5 357	83 555	120 129
Totals	53 730	60 412	608 144	3 074	46 247	482 233	1 246 445

Note 1: The categories of Fees and Income are:

Extension and further extension application fees (Local Government (Planning and Development) Regulations, 1994) Sixth Schedule
Register fees (Local Government Planning and Development) Regulations, 1994) Sixth Schedule
Licence fees (S.89, 1963 Act) (Local Government Planning and Development) Regulations, 1994) Seventh Schedule
Fees for letters or certificates that development is exempt
Fees for letters or certificates that conditions/permission complied with, etc.
Miscellaneous - e.g. copies of documents, etc.

Table 31: Total Amount Received in Fees by Type of Fee

Type of fee	1998	1999	2000 £	2000 €	2001 £	2001 €
Application fees, gross	19 433 307	24 077 947	25 705 002	32 638 620	25 273 757	32 091 052
Application fees, refunds	- 312 478	- 562 744	423 226	537 387	753 538	956 795.9
Application fees, net	19 120 829	23 445 203	25 281 776	32 101 233	25 520 219	31 134 256
Other fees total	570 852	605 848	686 698	871 927	1 246 445	1 582 659
Total	19 691 681	24 051 051	25 968 474	32 973 160	25 766 664	32 716 914

Tables 32, 33, 34 and 35

Tables 32 and 34 give a breakdown of staff by full/part time and technical/ administrative. The category 'part time' includes part time employees as well as full time employees who are involved in planning work for only part of their time. The total staff complement has been calculated as the sum of technical and administrative staff. Technical staff include fire officers, health officers, etc., who are for part of their time involved with planning control duties.

Over three-quarters of staff involved in planning in the local authorities are full time. Reporting on the category "part-time" has been uneven and the category may not be correctly interpreted by all authorities.

Tables 33 and 35 give the costs involved in operating the planning control procedures. Costs are estimated in two ways. The first category deals with costs as given under Programme Group 4 (Planning and Development) of the annual estimates, while the second column gives an estimate of planning control costs as estimated by the planning authority. These are calculated by excluding costs of development plans, other development and promotion and industrial development from Programme Group 4, while adding staff costs from Programme Group 8 (Miscellaneous) which relate to planning control.

However, these figures can be treated in some instances only as estimates of staff numbers and costs. In comparing figures with previous years it must be taken into account that data are not always available for all authorities and that differences in interpretation continue to occur.

Table 32: Staff

Year	Full-time	Part-time	Technical	Administrative	Total
1991	687	422	617	492	1 109
1992	695	421	617	499	1 116
1993	706	367	601	472	1 073
1994	694	357	573	478	1 051
1995	696	337	545	488	1 033
1996	711	336	537	510	1 047
1997	759	355	579	535	1 114
1998	810	304	589	525	1 114
1999	955	334	661	628	1 289
2000	1 000	333	733.5	599.5	1 333
2001	1 185	355	798.5	741.5	1 540

Note 1: *The total staff complement has been calculated as the sum of technical and administrative staff. Small discrepancies with full time/part time staff data may occur.*

Table 33: Costs of Planning Control

Year	Costs of Programme 4		Costs of Planning Control	
	£s	€	£s	€
1992	31 583 768	40 103 113	16 795 877	21 326 365
1993	22 278 976	28 288 464	15 599 945	19 807 844
1994	33 518 017	42 559 102	19 497 809	24 757 111
1995	35 633 676	45 245 435	19 699 031	25 012 610
1996	33 334 066	42 325 533	19 894 749	25 261 120
1997	36 421 137	46 245 305	22 216 064	28 208 582
1998	38 273 724	48 597 605	25 896 743	32 882 081
1999	46 908 846	59 561 948	27 124 398	34 440 881
2000	50 652 031	64 314 813	33 968 136	43 130 636
2001	53 806 966	68 320 754	37 617 961	47 764 957

Table 34: Staff by Area

Area	Technical		Administrative		Total
	Full time	Part time	Full time	Part time	
Carlow	6	6	8	4	24
Cavan	6	19	10	8	43
Clare	18	10	27	4	59
Cork	49	34	63	29	175
Donegal	17	18	21.5	12	68.5
Dun Laoghaire-Rathdown	22	0	33	0	55
Fingal	45	6	48	0	99
Galway	25	2	30	0	57
Kerry	24	2	32	3	61
Kildare	17	17	27	4	65
Kilkenny	13.5	0	13	1	27.5
Laois	3	0	11	0	14
Leitrim	8	5	8	0	21
Limerick	22	0	15	0	37
Longford	3	8	6	1	18
Louth	10	16	15	6	47
Mayo	11	5	8	5	29
Meath	16	3	20	3	42
Monaghan	4	7	6	3	20
Offaly	1	1	2	0	4
Roscommon	7	0	9	0	16
Sligo	14	13	16	2	45
South Dublin	25	7	37	2	71
Tipperary N.R.	6	1	10.5	3	20.5
Tipperary S.R.	6	11	9	7	33
Waterford	10.5	0	13	0	23.5
Westmeath	14	14	9	5	42
Wexford	16	5	19	2	42
Wicklow	19	14	18.5	3	54.5
Sub-total	438	224	544.5	107	1 313.5
Cork	16	7	11	3	37
Dublin	81	0	51.5	0	132.5
Galway	11	0	12	0	23
Limerick	5	9	6	3	23
Waterford	5.5	2	3.5	0	11
Sub-total	118.5	18	84	6	226.5
Total	556.5	242	628.5	113	1 540

Table 35: Costs of Planning Control by Area

Area	Cost of Programme 4		Cost of Planning Control	
	£s	€s	£s	€s
Carlow	330 238	419 316	226 410	287 481
Cavan	1 234 064	1 566 938	862 958	1 095 731
Clare	n/a	n/a	n/a	n/a
Cork	276 122	350 603	106 715	135 500
Donegal	1 354 685	1 720 095	1 760 510	2 235 387
Dun Laoghaire-Rathdown	4 036 172	5 124 881	2 454 157	3 116 137
Fingal	4 694 129	5 960 314	1 811 468	2 300 090
Galway	2 519 950	3 199 676	2 430 090	3 085 578
Kerry	2 645 278	3 358 810	2 330 081	2 958 593
Kildare	1 649 871	2 094 904	1 257 282	1 596 419
Kilkenny	1 093 272	1 388 169	724 078	919 389
Laois	479 000	608 205	989 753	1 256 727
Leitrim	784 250	995 792	762 250	967 858
Limerick	1 577 085	2 002 485	109 079	138 501
Longford	43 100	54 725	489 274	621 249
Louth	1 288 744	1 636 367	975 700	1 238 883
Mayo	63 561	80 706	32 713	41 537
Meath	1 943 975	2 468 339	1 345 684	1 708 667
Monaghan	677 593	860 365	571 710	725 921
Offaly	54 206	68 827	50 800	64 503
Roscommon	703 038	892 674	830 400	1 054 391
Sligo	789 222	1 002 105	669 325	849 867
South Dublin	4 511 440	5 728 347	2 988 200	3 794 231
Tipperary N.	210 833	267 703	186 662	237 012
Tipperary S.	416 641	529 024	943 805	1 198 385
Waterford	1 024 078	1 300 311	650 853	826 413
Westmeath	195 370	248 069	1 183 452	1 502 674
Wexford	1 431 100	1 817 122	1 158 404	1 470 870
Wicklow	1 209 844	1 536 186	1 098 906	1 395 323
Sub-total	37 236 861	47 281 060	29 000 719	36 823 317
Cork	1 935 300	2 457 324	1 433 300	1 819 916
Dublin	13 214 800	16 779 335	5 698 625	7 235 761
Galway	598 419	759 835	469 300	595 888
Limerick	593 186	753 191	777 517	987 243
Waterford	228 400	290 008	238 500	302 833
Sub-total	16 570 105	21 039 693	8 617 242	10 941 640
Total	53 806 966	68 320 754	37 617 961	47 764 957

IV Other

Tables 36 and 37

The Local Government (Planning and Development) Act 1990, which consolidated and amended the law on planning compensation, took effect from June 10, 1990. Up to 1994 data on compensation were provided in two tables to take account of claims lodged under 1963 legislation. All new claims are now made under 1990 legislation. Table 36 provides a summary from the year 1990 onwards and gives additional information on the number and cost of claims which were 'otherwise disposed of'.

Apart from the year 1990 when claims to the value of £41m were lodged, the amount of claims from 1987 to 1992 was between £9m and £11m. The 1993 figure, in excess of £1.3m, represented an 85 per cent decrease over the previous year and the amount claimed in 1994, £0.33m, represented a further decrease of 76 per cent. The figure for 1995 was £0.77m. There were no claims in 1996 and the five claims registered in 1997 were all disposed of. The small number of claims made no longer justifies a table by 'Area'. Seven claims were made in 1998, none in 1999, nine in 2000 and none in 2001.

Table 36: Claims for Compensation ¹

Year	No	Claims		Number paid	Amount paid £s	No	'Disposed'	
		Amount £s					Value £s	
1990	23	41 035 394		3	80 000	15	12 496 900	
1991	22	11 162 505		3	25 000	11	6 966 985	
1992	9	9 053 348		2	34 000	9	3 356 000	
1993	6	1 363 000		5	171 700	8	2 051 000	
1994	5	325 070		2	12 000	5	476 000	
1995	4	774 500		0	0	1	11 500	
1996	0	0		1	26 215	0	0	
1997	5	2 320 000		0	0	5	2 320 000	
1998	7	10 080 000		0	0	3	5 800 000	
1999	0	0		0	0	0	0	
2000	9	11 748 500		0	0	1	0	
2001	0	0		0	0	0	0	

¹ Local Government (Planning and Development) Act, 1990 only.

Table 37: Serving of Notices under S29 of the 1963 Planning Act (obligation to purchase land)

Year	Number of notices	Decisions to comply		Cost £
		Planning Authority	An Bord Pleanála	
1992	1	1	1	500 000
1993	3	2	0	16 000
1994	4	0	1	N/A
1995	5	1	1	N/A
1996	4	0	0	N/A
1997	2	1	0	N/A
1998	0	0	0	0
1999	5	0	0	N/A
2000	7	0	1	400 000
2001	6	1	0	0

Tables 38, 39, 40, 41, 42 and 43

Table 38 gives the number of agreements made under S38 of the 1963 Planning Act. These are formal agreements (covenants) between the planning authority and the landowner. The use of this provision varies widely between planning authorities.

Table 39 shows the number of Tree Preservation Orders made and in force by the end of the year 2000 and 2001 by area and for the period 1992 to 1996. Figures for Tree Preservation Orders continue to be unreliable.

The use of S4 of the 1982 Act, which allows an extension of the five-year validity period of a permission where development is under construction, is recorded in Table 40.

Table 42 records the levels of use of various sections of the Planning Acts.

Table 38: Agreements under S38 of the 1963 Planning Act by Area

	1996	1997	1998	1999	2000	2001
Carlow	4	10	35	22	46	9
Cavan	0	0	0	0	0	0
Clare	33	28	27	57	0	6
Cork	196	160	143	304	651	817
Donegal	6	8	22	26	7	22
Dun Laoghaire/Rathdown	1	3	7	0	3	4
Fingal	9	12	0	0	0	1
Galway	170	150	0	0	0	0
Kerry	5	2	0	18	16	0
Kildare	112	115	121	81	44	56
Kilkenny	6	6	0	0	20	10
Laois	7	7	19	37	59	59
Leitrim	0	0	0	0	0	0
Limerick	9	14	8	3	1	0
Longford	0	0	0	0	0	0
Louth	8	0	0	19	2	201
Mayo	0	0	0	0	15	0
Meath	21	30	23	19	8	9
Monaghan	1	1	2	15	10	6
Offaly	7	5	3	2	1	0
Roscommon	12	8	3	4	0	5
Sligo	1	2	13	24	19	26
South Dublin	0	0	0	0	1	0
Tipperary NR	1	5	1	1	0	3
Tipperary SR	0	3	2	6	12	8
Waterford	1	3	4	7	5	2
Westmeath	11	15	19	15	5	9
Wexford	0	1	0	7	3	11
Wicklow	48	67	87	76	54	24
Sub-total	668	655	539	743	982	1 288
Cork	0	1	0	0	1	1
Dublin	0	0	0	0	0	1
Galway	0	0	0	0	0	0
Limerick	0	0	0	0	0	0
Waterford	0	0	0	0	1	0
Sub-total	0	1	0	0	2	2
Total	668	656	539	743	984	1290

Table 39: Tree Preservation Orders by Area

	Number of orders made					No. of orders in force at end of 2000	No. of orders in force at end of 2001
	1992	1993	1994	1995	1996		
Carlow	0	0	0	1	0	3	1
Cavan	0	0	0	0	0	0	0
Clare	0	0	1	0	0	1	0
Cork	0	0	0	0	0	8	0
Donegal	0	0	0	0	0	3	0
Dun Laoghaire/Rathdown	N/A	N/A	0	0	0	8	0
Fingal	N/A	N/A	0	0	0	3	0
Galway	0	0	0	0	0	1	0
Kerry	0	0	0	0	0	0	0
Kildare	1	0	0	0	0	4	0
Kilkenny	0	1	0	0	0	5	3
Laois	0	0	0	0	0	0	0
Leitrim	0	0	0	0	0	2	0
Limerick	0	0	0	0	0	2	2
Longford	0	0	0	0	0	0	0
Louth	0	1	0	1	0	4	4
Mayo	1	1	0	1	0	9	0
Meath	0	0	0	1	0	6	7
Monaghan	0	0	0	0	0	1	0
Offaly	0	0	0	0	0	14	0
Roscommon	0	0	0	0	0	3	0
Sligo	0	0	0	0	0	1	1
South Dublin	N/A	N/A	0	0	0	3	0
Tipperary NR	0	1	0	0	0	3	3
Tipperary SR	0	0	0	2	0	6	0
Waterford	0	1	0	0	0	24	24
Westmeath	0	0	0	0	0	17	17
Wexford	0	0	0	0	0	1	0
Wicklow	0	0	2	0	0	49	46
Sub-total	3	5	3	6	0	181	108
Cork Co.Bor.	0	0	0	0	0	11	9
Dublin Co.Bor.	0	0	1	0	0	2	0
Galway Co.Bor.	0	0	0	0	0	0	0
Limerick Co.Bor.	0	0	0	0	0	3	0
Waterford Co.Bor.	0	0	0	0	0	2	0
Sub-total	0	0	1	0	0	18	9
Total	3	5	4	6	0	199	117

Table 40: Extension of Duration of Permission for Substantially Completed Development (S4 1982 Act)

Year	Applied	Extensions Granted	Refused
1992	92	67	20
1993	96	74	16
1994	124	98	12
1995	142	112	19
1996	152	113	28
1997	134	106	20
1998	112	79	20
1999	80	60	10
2000	138	117	45
2001	103	69	22

Table 41: S89 Licence Applications

Area	Applications	Granted	Refused
Carlow	6	6	0
Cavan	32	32	0
Clare	22	20	2
Cork	6	6	0
Donegal	32	31	0
Dun Laoghaire/Rathdown	2	1	0
Fingal	2	2	0
Galway	6	6	0
Kerry	47	27	9
Kildare	11	10	0
Kilkenny	69	63	6
Laois	5	3	0
Leitrim	13	10	3
Limerick	16	4	6
Longford	0	0	0
Louth	48	48	10
Mayo	12	12	0
Meath	11	11	0
Monaghan	8	8	0
Offaly	0	0	0
Roscommon	0	0	0
Sligo	1	1	0
South Dublin	0	0	0
Tipperary NR	10	5	4
Tipperary SR	71	70	1
Waterford	204	198	6
Westmeath	6	3	3
Wexford	15	15	0
Wicklow	12	8	4
Sub-total	667	600	55
Cork	38	26	12
Dublin	282	268	3
Galway	14	8	6
Limerick	55	32	1
Waterford	19	10	3
Sub-total	408	344	25
Total	1 075	944	80

Table 42: Use of Miscellaneous Sections of the 1963 Planning Act

Section ¹	1996	1997	1998	1999	2000	2001
S30 1963 Act	0	10	0	3	0	0
S44 1963 Act	0	0	0	0	33	79
S47 1963 Act	0	0	0	-	1	0
S48 1963 Act	0	0	0	-	0	0
S54 1963 Act	0	0	1	-	0	0
S76 1963 Act	5	6	0	-	8	9
S85 1963 Act	67	44	36	30	26	11

Note 1: The titles of these sections are listed in Appendix B

Table 43:

Under S19 of the 1963 Planning Act each planning authority must make a development plan for its area and this plan must be reviewed at least once in every five years. In Table 43, the year in which the most recent development plan was adopted is given for each planning authority - these dates take account of the situation up to the end of 2001. Draft plans have not been included.

Table 43: Development Plans by Planning Authority¹

Planning	Date Adopted	Date Review Due/ Date Review Commenced
<i>County Councils</i>		
Carlow	15/12/97	5/10/01
Cavan	16/6/96	22/11/01
Clare	13/12/99	13/12/03
Cork	30/6/96	15/1/01
Donegal	31/7/00	31/7/04
Dun Laoghaire - Rathdown	13/7/98	29/5/02
Fingal	19/10/99	19/10/03
Galway	27/5/97	25/5/02
Kerry	20/12/96	10/12/01
Kildare	24/5/99	24/5/03
Kilkenny	18/7/94	18/7/99
Laois	29/5/00	29/5/04
Leitrim	14/4/97	16/8/01
Limerick	28/5/99	28/5/03
Longford	16/5/97	6/6/01
Louth	15/12/97	14/12/01
Mayo	17/2/92	4/1/02
Meath	1/3/01	1/3/05
Monaghan	26/4/99	26/4/03
Offaly	9/9/96	20/12/01
Roscommon	17/5/93	17/5/98
Sligo	23/12/99	23/12/03
South Dublin	15/12/98	12/12/02
North Tipperary	21/9/98	31/10/02
South Tipperary	4/11/96	22/12/02
Waterford	13/7/99	6/12/01
Westmeath	27/2/94	27/2/99
Wexford	11/6/01	11/6/05
Wicklow	8/3/99	8/3/03

Table 43: Development Plans by Planning Authority (contd.)

Planning	Date Adopted	Date Review Due/ Date Review Commenced
<i>City Councils</i>		
Cork	23/3/98	19/3/02
Dublin	22/3/99	22/3/03
Galway	29/3/99	29/3/03
Limerick	31/12/98	14/12/02
Waterford	12/9/94	12/9/99
<i>Borough Councils</i>		
Clonmel	6/9/93	6/9/98
Drogheda	20/4/99	20/4/03
Kilkenny	27/7/94	27/7/99
Sligo	30/6/92	6/3/98
Wexford	11/1/93	11/1/98
<i>Town Councils</i>		
Arklow	12/5/99	12/5/03
Athlone	3/9/90	3/9/95
Athy	10/4/00	9/4/00
Ballina	15/12/92	4/7/01
Ballinasloe	13/6/95	18/6/01
Birr	12/10/98	4/10/02
Bray	1/6/99	1/6/03
Buncrana	10/3/93	10/3/98
Bundoran	20/1/98	18/10/01
Carlow	22/9/98	5/10/01
Carrickmacross	11/6/01	11/6/05
Carrick-on-Suir	14/11/94	14/11/99
Cashel	6/6/95	15/11/01
Castlebar	31/1/91	3/1/96
Castleblaney	23/10/01	23/10/05
Cavan	9/9/96	22/11/01
Clonakilty	6/1/98	22/10/02
Clones	16/12/92	16/12/97
Cobh	28/4/00	28/4/04
Dundalk	9/7/96	1/2/02
Dungarvan	18/12/00	18/12/04
Ennis	2/11/92	1/2/02
Enniscorthy	12/10/01	12/10/05
Fermoy	8/2/98	18/4/02
Kells	14/2/01	14/2/05
Killarney	25/1/95	22/2/01
Kilrush	10/2/94	10/1/01
Kinsale	5/1/98	17/1/02

Table 43: Development Plans by Planning Authority (contd.)

Planning	Date Adopted	Date Review Due/ Date Review Commenced
Letterkenny	28/6/93	18/10/01
Listowel	19/3/98	7/3/02
Longford	16/12/97	2/1/02
Macroom	17/12/96	7/12/01
Mallow	18/5/98	2/10/02
Midleton	10/3/98	9/3/02
Monaghan	29/5/00	29/5/04
Naas	29/5/99	29/5/03
Navan	1/10/96	26/2/02
Nenagh	22/1/01	22/1/05
New Ross	15/12/98	14/12/02
Skibbereen	1/11/98	1/11/02
Templemore	11/11/92	16/2/02
Thurles	3/5/93	22/10/02
Tipperary	22/10/01	22/10/05
Tralee	16/12/98	6/12/01
Trim	12/6/98	4/3/02
Tullamore	29/4/98	29/11/02
Westport	4/3/92	15/4/97
Wicklow	7/4/97	6/4/01
Youghal	9/6/97	24/6/02

Appendix A

- Planning Fee Classes of Development

1. Dwellings
2. Domestic extensions etc.
3. Agricultural buildings and structures
4. Buildings or structures for keeping horses, ponies or greyhounds
5. Other buildings (other than 1, 2, 3, 4 - e.g. commercial)
6. Intensive agriculture, afforestation, peat extraction
7. Use of land for mining, quarrying etc, or for dumping
8. Use of land for caravanning etc, parking of vehicles or open storage
9. Provision of plant and machinery, or of storage tank or structures
10. Petrol filling stations
11. Advertisements
12. Electricity lines or overhead telecommunications lines
13. Use of land as a golf course or as a pitch and putt course
14. Use of land as a burial ground
15. Development not coming within any of the foregoing classes

Appendix B

- Miscellaneous Sections of the 1963 Planning Act

-
- S30 Revocation and modification of permission
 - S44 Requiring removal or alteration of hedge
 - S47 Creation of public rights of way pursuant to agreement
 - S48 Compulsory powers for creation of public rights of way
 - S54 Repair and tidying of advertisement structures and advertisements
 - S76 Extinguishment of public rights of way
 - S85 Placing of cables, wires and pipelines by planning authority
 - S89 Applications for various licences

Appendix C:

Enactments and Regulations relating to Physical Planning (to end 2001)

Planning and Development Acts

Local Government (Planning and Development) Act, 1963 (No. 28 of 1963)

Local Government (Planning and Development) Act, 1976 (No. 20 of 1976)

Local Government (Planning and Development) Act, 1982 (No. 21 of 1982)

Local Government (Planning and Development) Act, 1983 (No. 28 of 1983)

Local Government (Planning and Development) Act, 1990 (No. 11 of 1990)

Local Government Act, 1991 (Sections 44 and 45) (No. 11 of 1991)

Local Government (Planning and Development) Act, 1992 (No. 14 of 1992)

Local Government (Planning and Development) Act, 1993 (No. 12 of 1993)

Local Government (Planning and Development) Act, 1998 (No. 9 of 1998)

Local Government (Planning and Development) Act, 1999 (No. 17 of 1999)

Planning and Development Act, 2000 (No. 30 of 2000)

Planning and Development Regulations

European Communities (Environmental Impact Assessment) Regulations, 1989 (S.I. No. 349 of 1989)

European Communities (Environmental Impact Assessment) (Amendment) Regulations, 1994. (S.I. 84 of 1994)

Local Government (Planning and Development) Regulations, 1994 (S.I. No. 86 of 1994)

Local Government (Planning and Development) Regulations, 1995 (S.I. No. 69 of 1995)

Local Government (Planning and Development) Regulations, 1995 (S.I. No. 75 of 1995)

Local Government (Planning and Development) Regulations, 1996 (S.I. No. 100 of 1996)

Local Government (Planning and Development) Regulations, 1996 (S.I. No. 101 of 1996)

Local Government (Planning and Development) Regulations, 1997 (S.I. No. 78 of 1997)

Local Government (Planning and Development) Regulations, (No.2) 1997 (S.I. No. 121 of 1997)

Local Government (Planning and Development) (No.3) Regulations, 1997 (S.I. No. 261 of 1997)

Local Government (Planning and Development) (Fees) (Amendment) Regulations 1998 (S.I. No. 119 of 1998)

Local Government (Planning and Development) Regulations, 1998 (S.I. No. 124 of 1998)

Local Government (Planning and Development) (fees) (Amendment) (No. 2) Regulations, 1998 (S.I. No. 128 of 1998)

Local Government (Planning and Development) (No. 2) Regulations, 1998 (S.I. No. 194 of 1998)

Local Government (Planning and Development) Regulations, 1999 (S.I. No. 92 of 1999)

European Communities (Environmental Impact Assessment) (Amendment) Regulations, 1999. (S.I. No. 93 of 1999)

Local Government (Planning and Development) (No.2) Regulations, 1999. (S.I. No. 431 of 1999)

Local Government (Planning and Development) Regulations, 2000 (S.I. No. 181 of 2000)

Planning and Development Act, 2000 (Commencement) Order, 2000 (S.I. No. 349 of 2000)

Local Government (Planning and Development) Regulations, 2000 (S.I. No. 350 of 2000)

Planning and Development Act, 2000 (Commencement) (No. 2) Order, 2000 (S.I. No. 449 of 2000)

European Communities (Environmental Impact Assessment) (Amendment) Regulations, 2000 (S.I. No. 450 of 2000)

Local Government (Planning and Development) (No. 2) Regulations, 2000 (S.I. No. 457 of 2000)

Local Government (Planning and Development) (No. 2) Regulations, 2000 (S.I. No. 458 of 2000)

Local Government (Planning and Development) General Policy Directive (Shopping) 1998 (Revocation) Order, 2001 (S.I. No. 1 of 2001)

Planning and Development Act, 2000 (Commencement) Order, 2001 (S.I. No. 153 of 2001)

Planning and Development (Licensing of Outdoor Events) Regulations, 2001 (S.I. No. 154 of 2001)

Planning and Development Act, 2000 (Commencement)(No. 2) Order, 2001 (S.I. No. 335 of 2001)

Planning and Development (Appointment of Chairperson and Ordinary Members of An Bord Pleanála) Regulations, 2001 (S.I. No. 336 of 2001)

Local Government (Planning and Development) (Fees) Regulations, 2001 (S.I. No. 525 of 2001)

Local Government (Planning and Development) (Amendment) Regulations, 2001 (S.I. No. 539 of 2001)

Planning and Development Act, 2000 (Commencement) (No. 3) Order, 2001 (S.I. No. 599 of 2001)

Planning and Development Regulations, 2001 (S.I. No. 600 of 2001)

Planning and Development General Policy Directives

Local Government (Planning and Development) General Policy Directive, 1982 (S.I. No. 264 of 1982)

Local Government (Planning and Development) General Policy Directive, 1988 (S.I. No. 317 of 1988)

Local Government (Planning and Development) General Policy Directive, (Shopping), 1998 (Revocation Order), 2001 (S.I. No. 1 of 2001)

Appendix D: Other Publications

Other publications dealing with planning statistics include:

- Planning Statistics (Quarterly), Department of the Environment
- Statistical Release - Planning Permissions (Quarterly), Central Statistics Office
- Environment Bulletin (Quarterly), Department of the Environment
- An Bord Pleanála Annual Report