

Introduction

The publication series Planning Statistics was established in 1986. Its main objective is to monitor the implementation of the Local Government (Planning and Development) Acts 1963 - 1999. Most of the statistics relate to development control procedures (planning applications, appeals, fees, enforcement, etc.) and provide an up-to-date picture of the current situation as well as the trends emerging in relation to the operation of the physical planning system as a whole.

The current edition takes 1995 as its starting point and refers the reader to earlier editions for information prior to that date. Table 1, which gives overall trends from 1977 to date, has been retained.

The Planning Statistics Quarterly has been available since the beginning of 1990. It provides a breakdown of basic information on planning applications, decisions, refusals and deferrals by individual authority. Since 1990, information (in particular, Tables 2 and 3) is presented in the Annual Statistics by Area, an Area being a county authority and all other authorities within that county but excluding Borough Councils.

Most of the figures presented here are based on information submitted by planning authorities either quarterly or annually to the Department of the Environment. The accuracy of the figures is dependent on the accuracy of the data submitted by each planning authority. Where discrepancies were noted (for example, in comparing aggregated quarterly returns with annual returns) these were resolved, where possible, by further communication with the relevant authorities. Minor discrepancies, where they remain unresolved, have been noted in individual tables.

In calculating 'number of permissions', 'number of refusals', 'number of enforcement cases' and 'number of convictions' it should be borne in mind that the total number of refusals for one year could refer to applications from the previous year; similarly a period of more than one year could elapse between the initiation of an enforcement order and a possible conviction. In making comparisons between the 'deferral rate' for 1991 and subsequent years and years prior to 1991, it should be noted that since 1990 the 'deferral rate' includes those cases deferred with the written consent of the applicant. In years prior to 1990 only cases arising from requests for additional information were taken into account.

The tables have been grouped in four sections. The first two sections, 'Planning Applications' and 'Enforcement' deal with the development control system. The third section, 'Fees and Administration', covers the administrative aspects of the planning system, including staffing and resources, while the final section provides statistics on the use of various procedures in the Planning Acts.

A short section of text precedes each table or set of tables. Deficiencies in the statistics that may affect the validity or interpretation are pointed out in these paragraphs. In addition, some interpretation of the data is provided where relevant. However, the main purpose of this publication is to provide a set of basic planning statistics.

Planning and Development Act 2000

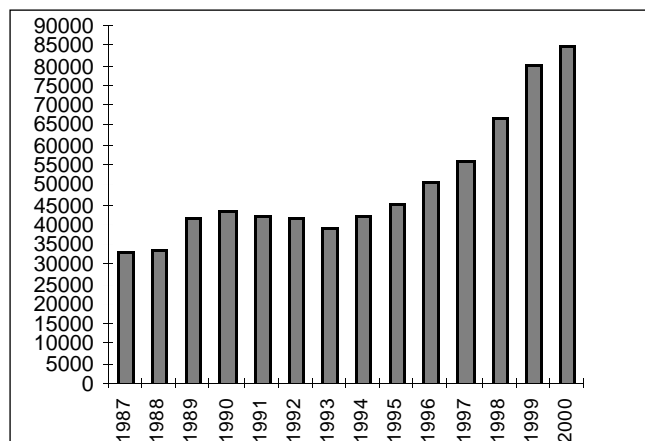
In August 2000, the Planning and Development Act, 2000 was enacted following detailed consideration of its provisions by the Oireachtas. This Act, which revises, extends and consolidates the legislative basis for the Irish planning system, introduced many significant changes and initiatives designed to introduce a sustainable development ethos into the Irish planning system, increase the efficiency of the system and ensure a strategic approach to land-use planning in Ireland.

Important changes introduced by the Act include new streamlined procedures for the making of development plans at county and local level within a regional planning framework. Procedures for dealing with planning applications and enforcement have been simplified and public involvement in these procedures strengthened. The Act contains innovative proposals for the establishment of strategic development zones to facilitate the provision of housing and important new industries. The statutory functions of the Minister in relation to compulsory acquisitions by local authorities and environment impact assessment of local authority development were transferred to An Bord Pleanála. This change was designed to update the decision making process for major infrastructural developments, including roads, under the National Development Plan 2000 - 2006.

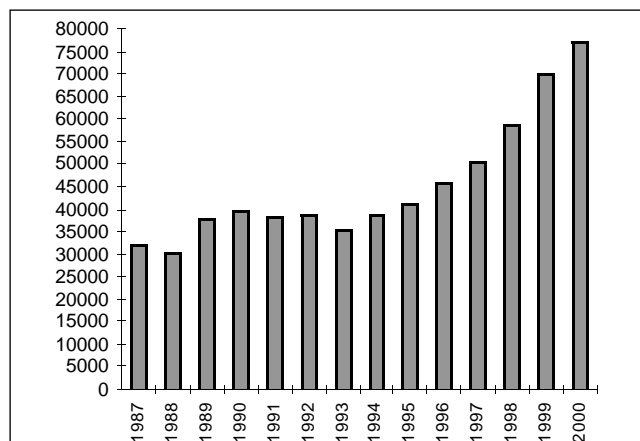
In addition, the Act contains radical measures to enhance the role of planning authorities in the provision of housing. Housing strategies must now be prepared for all local authority areas. These will provide an estimate of the need for all types of housing, including social and affordable housing, for the population in each area. Having estimated local needs for housing, a proportion, up to a maximum of 20%, of residentially zoned land in each area must be reserved by the local authority for the provision of social and affordable housing. This part of the Act was referred to the Supreme Court to determine its constitutionality, which was upheld in August 2000.

The Act is being brought into force in stages. Some priority provisions commenced by the end of 2000 include those on the supply of housing, on strategic development zones and on the transfer of the Minister's statutory functions to An Bord Pleanála.

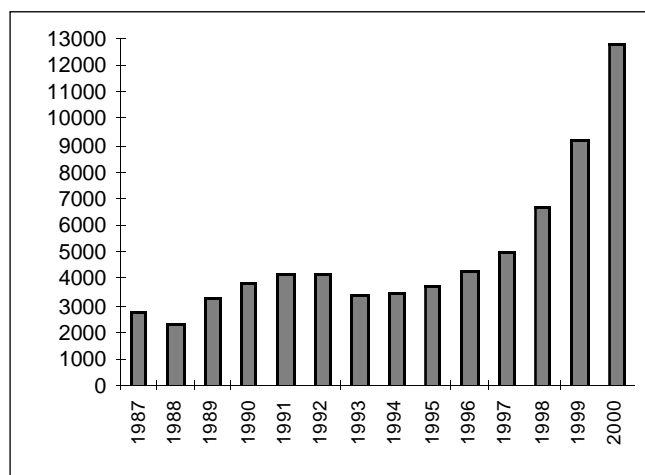
Figure 1: Planning Applications, Decisions, Refusals & Appeals



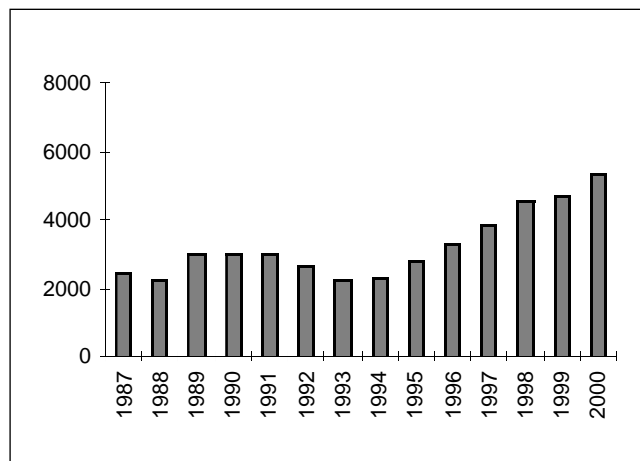
APPLICATIONS



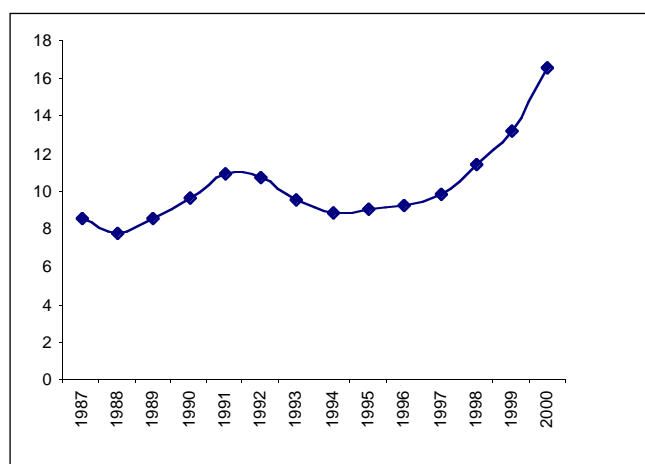
DECISIONS



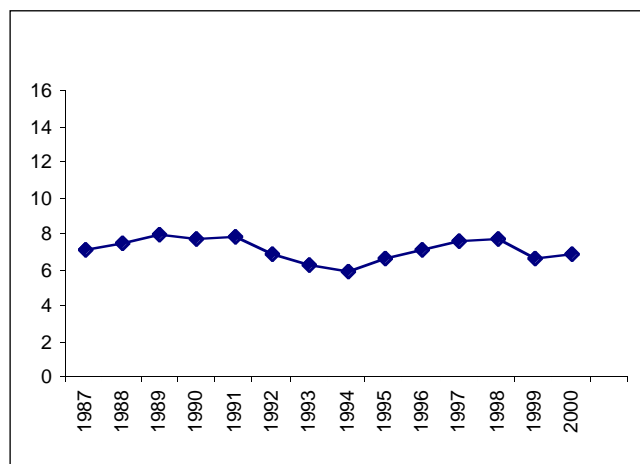
REFUSALS



APPEALS



REFUSAL RATE
(refusals as % of decisions)



APPEAL RATE
(appeals as % of decisions)

I Planning Applications

Tables 1, 2, 3 and 4

In the ten year period from 1990 to 2000 the number of planning applications made to local authorities almost doubled.

Between 1996 and 1997 there was an increase of ten percent in the number of applications for planning permission received by Local Authorities. The year-on-year increase in both 1998 and 1999 was 20%. The number of applications received in 2000 represented a 6% increase compared with 1999.

Since 1982, permissions for which development had not taken place within five years become invalid. This probably had the effect of reducing the number of 'speculative' (and perhaps not genuine) applications. There was a further structural change during 1983 when planning fees were introduced for the first time.

In the subsequent years up to 1993 the figures fluctuated between thirty three thousand and just over forty thousand.

Since 1994 there has been a constant rise in the figures giving a cumulative increase of over one hundred per cent in the seven year period.

Table 4 gives the number of refusals and the (so-called) 'refusal rates'. The percentage of planning decisions that consist of a refusal (the refusal rate) had shown a consistent decline from 15.1 per cent in 1981 to 7.4 per cent in 1986. Between 1987 and 1997, apart from 1988, the rate fluctuated between 8 and 11 per cent. The rate for 1998 was 11.5 per cent, in 1999 the rate increased to 13.3 per cent, and in 2000 it further increased to 16.6 per cent.

The refusal rate is not an indicator of the proportion of applications that end up as refusals, nor should it be regarded as an indicator of the 'efficiency' or 'commitment' of any individual planning authority. Higher refusal rates might be expected, for example, in areas of high amenity value or in areas under intensive pressures for speculative development.

Some of the above trends are graphically presented in Figure 1.

Table 1: Planning Applications, Decisions and Refusals

Year	Planning applications	Planning decisions	Refusals	Refusal rate ¹
1977	44 691	40 873	4 673	11.4
1978	54 223	46 655	5 636	12.1
1979	57 060	55 062	6 872	12.5
1980	50 138	47 207	6 162	13.1
1981	53 890	48 367	7 318	15.1
1982	48 855	48 234	7 242	15.0
1983	39 569	37 290	4 890	13.1
1984	33 018	31 145	3 117	10.0
1985	33 649	31 264	2 992	9.6
1986	38 971	35 447	2 624	7.4
1987	33 472	31 988	2 742	8.6
1988	33 564	30 305	2 350	7.8
1989	41 924	38 018	3 293	8.6
1990	43 378	39 698	3 866	9.7
1991	41 996	38 450	4 234	11.0
1992	41 711	38 785	4 197	10.8
1993	39 486	35 539	3 428	9.6
1994	42 318	38 849	3 456	8.9
1995	45 261	41 282	3 773	9.1
1996	50 732	46 015	4 278	9.3
1997	55 929	50 427	5 008	9.9
1998	67 075	58 634	6 730	11.5
1999	80 261	69 869	9 274	13.3
2000	85 300	77 295	12 810	16.6

Note 1: Number of decisions to refuse permission as a percentage of the total number of decisions

Table 2: Planning Applications by area

Area	1995	1996	1997	1998	1999	2000	(%) Change '99 to '00
Carlow	559	623	637	810	985	1 004	1.9
Cavan	823	903	991	1 293	1 696	2 311	36.3
Clare	1 483	1 831	1 957	2 342	2 842	2 954	3.9
Cork	4 828	5 227	5 572	6 227	7 717	11 558	49.8
Donegal	2 222	2 520	2 831	3 652	5 520	5 930	7.4
Dun Laoghaire/Rathdown	1 375	1 683	1 851	2 176	2 335	2 317	(0.8)
Fingal	1 376	1 633	1 815	2 088	2 520	2 284	(9.4)
Galway	2 615	3 160	3 833	4 886	5 588	6 195	10.9
Kerry	2 478	2 811	3 095	3 638	4 117	4 710	14.4
Kildare	1 589	1 882	2 060	2 574	2 618	2 768	5.7
Kilkenny	1 205	1 277	1 355	1 531	2 079	2 361	13.6
Laois	730	814	812	1 153	1 504	1 337	(11.1)
Leitrim	402	427	575	729	922	1 246	35.1
Limerick	1 524	1 794	1 899	2 133	2 639	2 924	10.8
Longford	524	524	498	557	813	940	15.6
Louth	1 406	1 543	1 592	1 897	2 395	2 259	(5.7)
Mayo	1 981	2 409	2 679	3 377	3 618	3 605	(0.4)
Meath	1 531	1 654	2 021	2 442	2 767	2 851	3.0
Monaghan	877	925	1 040	1 083	1 315	1 593	21.1
Offaly	779	864	979	1 195	1 678	1 558	(7.2)
Roscommon	824	885	986	1 258	1 479	2 023	36.8
Sligo	882	942	946	1 172	1 309	1 483	13.3
South Dublin	1 118	1 249	1 198	1 651	1 758	1 681	(4.4)
Tipperary NR	879	900	1 028	1 216	1 609	1 731	7.6
Tipperary SR	1 028	1 070	1 146	1 331	1 707	1 701	(0.4)
Waterford	845	898	1 053	1 302	1 496	1 650	10.3
Westmeath	880	1 135	1 339	1 532	1 895	1 867	(1.5)
Wexford	2 006	2 207	2 451	3 146	4 097	4 820	17.6
Wicklow	1 479	1 541	1 864	2 156	2 295	2 215	(3.5)
Sub-total	40 253	45 331	50 106	60 547	73 313	81 876	11.7
Cork	803	796	891	982	1 055	1 071	1.5
Dublin	2 698	2 945	3 248	3 782	4 064	4 562	12.3
Galway	761	851	855	912	864	823	(4.7)
Limerick	394	408	431	463	452	446	(1.3)
Waterford	352	401	401	389	513	522	1.8
Sub-total	5 008	5 401	5 826	6 528	6 948	7 424	6.9
Total	45 261	50 732	55 929	67 075	80 261	89 300	11.3

Table 3: Planning Decisions by Area

Area	1995	1996	1997	1998	1999	2000	% Change '99 to '00
Carlow	524	578	591	680	862	939	8.9
Cavan	749	860	939	1 224	1482	2 087	40.8
Clare	1 275	1 516	1 658	1 914	2 356	2 675	13.5
Cork	4 520	4 870	5 113	5 391	6 736	7 297	8.3
Donegal	1 998	2 320	2 476	3 238	4 584	5 393	17.6
Dun Laoghaire/Rathdown	1 330	1 544	1 777	2 073	2 169	2 263	4.3
Fingal	1 303	1 486	1 673	2 003	2 382	2 211	(7.2)
Galway	2 460	2 969	3 371	4 471	4 750	5 351	12.7
Kerry	2 095	2 668	2 921	3 298	3 756	4 288	14.2
Kildare	1 600	1 612	1 727	1 917	2 264	2 451	8.3
Kilkenny	1 129	1 100	1 303	1 336	1 753	2 227	27.0
Laois	642	725	759	991	1 304	1 266	(2.9)
Leitrim	385	451	492	577	844	1 016	20.4
Limerick	1 411	1 605	1 703	1 859	2 327	2 373	2.0
Longford	481	443	482	476	637	846	32.8
Louth	1 245	1 310	1 425	1 552	1 941	1 972	1.6
Mayo	1 698	2 010	2 247	2 721	2 895	3 452	19.2
Meath	1 418	1 507	1 711	2 168	2 397	2 566	7.1
Monaghan	759	833	936	914	1 112	1 383	24.4
Offaly	692	715	851	963	1 412	1 422	0.7
Roscommon	711	750	846	1 047	1 250	1 673	33.8
Sligo	757	798	787	1 003	1 125	1 235	9.8
South Dublin	1 065	1 160	1 409	1 509	1 638	1 481	(9.6)
Tipperary NR	851	852	987	1 160	1 427	1 451	1.7
Tipperary SR	935	1 008	1 053	1 200	1 536	1 580	2.9
Waterford	759	834	978	1 184	1 319	1 471	11.5
Westmeath	788	1 057	1 192	1 354	1 627	1 692	4.0
Wexford	1 874	2 025	2 104	2 798	3 697	4 420	19.6
Wicklow	1 349	1 382	1 586	1 802	1 932	1 943	0.6
Sub-total	36 803	40 988	45 097	52 823	63 514	70 424	10.9
Cork	744	781	808	911	970	1 004	3.5
Dublin	2 377	2 634	3 075	3 429	3 825	4 190	9.5
Galway	666	844	658	698	660	809	22.6
Limerick	369	407	406	397	448	410	(8.5)
Waterford	323	361	383	376	452	483	6.9
Sub-total	4 202	5 027	5 330	5 811	6 355	6 896	8.5
Total	41 282	46 015	50 427	58 634	69 869	77 320	10.7

Table 4: Refusals and Refusal Rate by Area

Area	1995		1996		1997	
	Refusals	Rate	Refusals	Rate	Refusals	Rate
Carlow	13	2.5	15	2.6	24	4.1
Cavan	32	4.3	39	4.5	41	4.4
Clare	33	2.6	40	2.6	92	5.5
Cork	445	9.8	404	8.3	447	8.7
Donegal	97	4.9	98	4.2	153	6.2
Dun Laoghaire/Rathdown	169	12.7	214	13.9	196	11.0
Fingal	236	18.1	269	18.1	292	17.5
Galway	286	11.6	336	11.3	401	11.9
Kerry	95	4.5	160	6.0	225	7.7
Kidare	260	16.3	274	17.0	227	13.1
Kilkenny	75	6.6	96	8.7	146	11.2
Laois	38	5.9	48	6.6	59	7.8
Leitrim	8	2.1	17	3.8	30	6.1
Limerick	50	3.5	50	3.1	92	5.4
Longford	46	9.6	44	9.9	43	8.9
Louth	124	10	97	7.4	103	7.2
Mayo	53	3.1	83	4.1	132	5.9
Meath	170	12	219	14.5	322	18.8
Monaghan	51	6.7	103	12.4	98	10.5
Offaly	85	12.3	68	9.5	96	11.3
Roscommon	46	6.5	36	4.8	46	5.4
Sligo	79	10.4	63	7.9	56	7.1
South Dublin	105	9.9	140	12.1	217	15.4
Tipperary NR	38	4.5	35	4.1	62	6.3
Tipperary SR	37	4	32	3.2	42	4.0
Waterford	40	5.3	46	5.5	62	6.3
Westmeath	56	7.1	65	6.1	76	6.4
Wexford	209	11.2	255	12.6	228	10.8
Wicklow	197	14.6	228	16.5	273	17.2
Sub-total	3 173	8.6	3 574	8.7	4 281	9.5
Cork	81	10.9	77	9.9	78	9.7
Dublin	392	16.5	414	15.7	461	15.0
Galway	85	12.8	143	16.9	124	18.8
Limerick	27	7.3	46	11.3	434	8.4
Waterford	15	4.6	24	6.6	30	7.8
Sub-total	600	13.4	704	14.0	727	13.6
Total	3 773	9.1	4 278	9.3	5 008	9.9

Table 4: Refusals and Refusal Rate by Area (cont'd)

Area	1998		1999		2000		Rate Change from 1999 to 2000
	Refusals	Rate	Refusals	Rate	Refusals	Rate	
Carlow	40	5.9	72	8.4	158	16.8	8.4
Cavan	56	4.6	87	5.9	230	11.0	5.1
Clare	104	5.4	105	4.5	454	17.0	12.5
Cork	608	11.3	889	13.2	1 378	18.9	5.7
Donegal	353	10.9	792	17.3	929	17.2	(0.1)
Dun Laoghaire/Rathdown	261	12.6	382	17.6	344	15.2	(2.4)
Fingal	444	22.2	538	22.6	529	23.9	1.3
Galway	583	13.0	607	12.8	774	14.5	1.7
Kerry	259	7.9	438	11.7	817	19.1	7.4
Kildare	194	10.1	258	11.4	251	10.2	(1.2)
Kilkenny	190	14.2	232	13.2	442	19.8	6.6
Laois	104	10.5	244	18.7	258	20.4	1.7
Leitrim	44	7.6	61	7.2	86	8.5	1.3
Limerick	135	7.3	251	10.8	266	11.2	0.4
Longford	59	12.4	68	10.7	162	19.1	8.4
Louth	135	8.7	134	6.9	330	16.7	9.8
Mayo	152	5.6	331	11.4	428	12.4	1.0
Meath	555	25.6	551	23.0	633	24.7	1.7
Monaghan	92	10.1	101	9.1	226	16.3	7.2
Offaly	128	13.3	243	17.2	274	19.3	2.1
Roscommon	81	7.7	113	9.0	180	10.8	1.8
Sligo	84	8.4	100	8.9	206	16.7	7.8
South Dublin	246	16.3	334	20.4	328	22.1	1.7
Tipperary NR	117	10.1	175	12.3	177	12.2	(0.1)
Tipperary SR	53	4.4	95	6.2	138	8.7	2.5
Waterford	81	6.8	107	8.1	141	9.6	1.5
Westmeath	97	7.2	202	12.4	336	19.9	7.5
Wexford	341	12.2	603	16.3	937	21.2	4.9
Wicklow	328	18.2	357	18.5	412	21.2	2.7
Sub-total	5 924	11.3	8 470	13.3	11 824	16.8	3.5
Cork	103	11.3	129	13.3	163	16.2	2.9
Dublin	522	15.2	496	13.0	636	15.2	2.2
Galway	100	14.3	95	14.4	107	13.2	(1.2)
Limerick	57	14.4	43	9.6	41	10.0	0.4
Waterford	24	6.4	41	9.1	39	8.1	(1.0)
Sub-total	806	13.9	804	12.7	986	14.3	1.6
Total	6 730	11.5	9 274	13.3	12 810	16.6	3.3

Tables 5, 6, 7 and 8

In 2000, 5,306 planning decisions were the subject of an appeal to An Bord Pleanála - an increase of 12.7% over the previous year. The figure does not include reactivated appeals. A considerable number of appeals - approximately 20% of the total - were disposed of without a formal decision (withdrawn, invalid, etc.). In 2000 the number of formal decisions amounted to 3,801.

Table 8 (which is obtained in full from the annual report of An Bord Pleanála) shows the breakdown of appeal decisions in three categories: reversed, varied and confirmed. Slightly more than one in four appeals leads to a reversal of the local authority decision. This information is not available for individual authorities.

Table 5: Planning Decisions and Appeals¹

Year	Planning decisions	Appeals made	Appeal decisions	Appeals made as percentage of planning decisions
1988	30 305	2 257	1 955	7.5
1989	38 018	3 043	1 811	8.0
1990	39 698	3 038	2 732	7.7
1991	38 450	3 050	2 511	7.9
1992	38 785	2 671	2 473	6.9
1993	35 539	2 249	2 033	6.3
1994	38 849	2 331	1 802	6.0
1995	41 282	2 777	2 064	6.7
1996	46 015	3 319	2 540	7.2
1997	50 427	3 845	2 902	7.6
1998	58 634	4 533	3 154	7.7
1999	69 869	4 706	3 697	6.7
2000	77 320	5 306	3 801	6.9

Note 1: Source - An Bord Pleanála

Table 6: Planning Decisions and Appeals in 2000 by Area

Area	Planning Decisions	Appeals Made	Appeals made as % of Planning Decisions
Carlow	939	59	6.3
Cavan	2 087	72	3.4
Clare	2 675	176	6.6
Cork	7 297	510	7.0
Donegal	5 393	177	3.3
Dun Laoghaire/ Rathdown	2 263	376	16.6
Fingal	2 211	318	14.4
Galway	5 351	191	3.6
Kerry	4 288	230	5.4
Kildare	2 451	176	7.2
Kilkenny	2 227	98	4.4
Laois	1 266	84	6.6
Leitrim	1 016	33	3.2
Limerick	2 373	132	5.6
Longford	846	55	6.5
Louth	1 972	142	7.2
Mayo	3 452	175	5.1
Meath	2 566	136	5.3
Monaghan	1 383	58	4.2
Offaly	1 422	86	6.0
Roscommon	1 673	63	3.8
Sligo	1 235	51	4.1
South Dublin	1 481	214	14.4
Tipperary NR	1 451	77	5.3
Tipperary SR	1 580	81	5.1
Waterford	1 471	92	6.3
Westmeath	1 692	84	5.0
Wexford	4 420	136	3.1
Wicklow	1 943	228	11.7
Sub-total	70 424	4310	6.1
Cork	1 004	128	12.7
Dublin	4 190	654	15.6
Galway	809	129	15.9
Limerick	410	43	10.5
Waterford	483	42	8.7
Sub-total	6 896	996	14.4
Total	77 320	5306	6.9

Table 7: Appeals Made by Area

Area	1995	1996	1997	1998	1999	2000
Carlow	16	13	29	38	49	59
Cavan	18	25	35	54	50	72
Clare	40	60	97	105	107	176
Cork	262	299	327	387	431	510
Donegal	61	81	91	124	203	177
Dun Laoghaire/Rathdown	184	236	264	309	334	376
Fingal	192	253	229	281	296	318
Galway	106	154	166	224	197	191
Kerry	92	148	193	179	188	230
Kildare	149	135	134	144	158	176
Kilkenny	45	66	79	79	85	98
Laois	20	29	34	50	80	84
Leitrim	10	12	19	31	35	33
Limerick	24	47	78	96	123	132
Longford	36	15	28	34	27	55
Louth	81	90	100	106	103	142
Mayo	71	94	135	161	162	175
Meath	74	102	117	156	135	136
Monaghan	45	43	39	44	36	58
Offaly	29	34	36	51	65	86
Roscommon	31	35	45	53	56	63
Sligo	40	41	38	42	54	51
South Dublin	131	140	154	191	190	214
Tipperary NR	38	38	51	81	106	77
Tipperary SR	27	35	43	53	63	81
Waterford	32	30	47	65	47	92
Westmeath	49	51	74	71	65	84
Wexford	57	89	89	116	135	136
Wicklow	145	161	192	226	218	228
Sub-total	2 105	2 556	2 973	3551	3798	4 310
Cork	91	74	88	118	93	128
Dublin	452	526	612	662	618	654
Galway	80	110	106	139	128	129
Limerick	24	31	35	31	40	43
Waterford	25	22	31	32	29	42
Sub-total	672	763	872	982	908	996
Total	2 777	3 319	3 845	4533	4706	5 306

Source: An Bord Pleanála

Table 8: Consistency of Planning Decisions in Appeal Cases (Section 26)

Year	Decision of Planning Authority		
	Reversed	Varied	Confirmed
1991	615 (24.5)	762 (30.3)	1 134 (45.2)
1992	598 (24.2)	676 (27.3)	1 199 (48.5)
1993	496 (24.4)	675 (33.2)	862 (42.4)
1994	418 (23.2)	652 (36.2)	732 (40.6)
1995	478 (23.2)	746 (36.1)	840 (40.7)
1996	582 (22.9)	915 (38.0)	1 043 (41.1)
1997	659 (22.9)	992 (34.5)	1 222 (42.5)
1998	664 (21.5)	1 143 (37.1)	1 276 (41.4)
1999	895 (24.6)	1 212 (33.3)	1 530 (42.1)
2000	1 010 (27.1)	1 170 (31.4)	1 546 (41.5)

Source: An Bord Pleanála

Tables 9, 10, 11 and 12

Over ten years applications for outline permission accounted for about one in ten of all applications. In 1999 these applications increased to just over 15% of the total and this level during 2000. It should be noted that the use of outline applications is relatively frequent in some authorities while the average for the 5 County Borough Councils is 2.4%. The ratio of applications for approval to those for outline permissions is approximately 1:5. This would appear to indicate that little use is made of the provision in the Planning Act which enables an applicant who has obtained an outline permission to make that permission operational by the granting of an approval. It therefore appears likely that most outlines are followed up by an application for permission (rather than approval) or that they are not followed up at all.

Table 12 shows that the 'refusal rate' for outline permissions - at approximately 33% - is almost twice the average rate. The refusal rate for approvals is approximately one sixth of the average rate. It should also be noted that while outline permissions deferred are 20% of all deferrals (Table 13), more than 50% of all outline applications are deferred.

Table 9: Planning Applications by Type of Application

Year	Type of Application			
	Outline Perm	Approval	Permission	Total
1991	4 486 (10.7)	773 (1.8)	36 737 (87.5)	41 996
1992	4 510 (10.8)	799 (1.9)	36 402 (87.3)	41 711
1993	4 048 (10.3)	822 (2.0)	34 616 (87.7)	39 486
1994	3 910 (9.2)	1 023 (2.4)	37 394 (88.4)	42 318
1995	4 225 (9.3)	1 052 (2.3)	39 984 (88.3)	45 261
1996	4 556 (9.0)	1 228 (2.4)	44 948 (88.6)	50 732
1997	5 877 (10.5)	1 431 (2.6)	48 261 (86.9)	55 929
1998	8 068 (12.0)	1 932 (2.9)	57 075 (85.1)	67 075
1999	12 206 (15.2)	2 494 (3.1)	65 561 (81.7)	80 261
2000	13 690 (15.3)	3 179 (3.6)	72 431 (81.1)	89 300

Table 10: Planning Applications by Area and by Type 2000

Area	Outline	%	Approval	%	Perm'sn	%	Total
Carlow	123	12.3	51	5.1	830	82.7	1 004
Cavan	492	21.3	100	4.3	1 719	74.4	2 311
Clare	650	22.0	169	5.7	2 135	72.3	2 954
Cork	1 641	14.2	194	1.7	9 723	84.1	11 558
Donegal	1 740	29.3	270	4.6	3 920	66.1	5 930
Dun Laoghaire/Rathdown	68	2.9	12	0.5	2 237	96.5	2 317
Fingal	80	3.5	24	1.1	2 180	95.4	2 284
Galway	1 348	21.8	354	5.7	4 493	72.5	6 195
Kerry	1 230	26.1	300	6.4	3 180	67.5	4 710
Kildare	130	4.7	30	1.1	2 608	94.2	2 768
Kilkenny	339	14.4	81	3.4	1 941	82.2	2 361
Laois	170	12.7	94	7.0	1 073	80.3	1 337
Leitrim	310	24.9	37	3.0	899	72.2	1 246
Limerick	514	17.6	100	3.4	2 310	79.0	2 924
Longford	164	17.4	46	4.9	730	77.7	940
Louth	378	16.7	150	6.6	1 731	76.6	2 259
Mayo	536	14.9	160	4.4	2 909	80.7	3 605
Meath	87	3.1	27	0.9	2 737	96.0	2 851
Monaghan	364	22.8	39	2.4	1 190	74.7	1 593
Offaly	273	17.5	70	4.5	1 215	78.0	1 558
Roscommon	500	24.7	115	5.7	1 408	69.6	2 023
Sligo	210	14.2	57	3.8	1 216	82.0	1 483
South Dublin	52	3.1	6	0.4	1 623	96.5	1 681
Tipperary NR	486	28.1	113	6.5	1 132	65.4	1 731
Tipperary SR	342	20.1	113	6.6	1 246	73.3	1 701
Waterford	334	20.2	65	3.9	1 251	75.8	1 650
Westmeath	306	16.4	119	6.4	1 442	77.2	1 867
Wexford	551	11.4	205	4.3	4 064	84.3	4 820
Wicklow	108	4.9	22	1.0	2 085	94.1	2 215
Sub-total	13 526	16.5	3 123	3.8	65 227	79.7	81 876
Cork	26	2.4	10	0.9	1 035	96.6	1 071
Dublin	93	2.0	29	0.6	4 440	97.3	4 562
Galway	26	3.2	10	1.2	787	95.6	823
Limerick	6	1.3	3	0.7	437	98.0	446
Waterford	13	2.5	4	0.8	505	96.7	522
Subtotal	164	2.2	56	0.8	7 204	97.0	7 424
Total	13 690	15.3	3 179	3.6	72 431	81.1	89 300

Table 11: Planning Decisions by Type of Application

Year	Type of Application		Permission	Total
	Outline Permission	Approval		
1991	3 842	(10.0)	664 (1.7)	33 942 (88.3)
1992	3 697	(9.5)	742 (1.9)	34 346 (88.6)
1993	3 299	(9.3)	681 (1.9)	31 559 (88.8)
1994	3 325	(8.6)	895 (2.3)	34 629 (89.1)
1995	3 539	(8.6)	942 (2.3)	36 801 (89.1)
1996	3 876	(8.4)	1 085 (2.4)	41 058 (89.2)
1997	4 741	(9.4)	1 295 (2.6)	44 390 (88.0)
1998	6 337	(10.8)	1 691 (2.9)	50 606 (86.3)
1999	9 512	(13.6)	2 190 (3.1)	58 167 (83.3)
2000	11 829	(15.3)	2 759 (3.7)	62 707 (81.1)

Table 12: Refusals as a Percentage of Decisions by Type of Application

Year	Type of Application		Permission	All Types
	Outline Permission	Approval		
1991	29.6	2.7	9.1	11.0
1992	30.9	2.3	8.8	10.8
1993	27.7	2.2	7.9	9.6
1994	23.4	2.9	7.5	8.9
1995	24.3	2.3	7.9	9.1
1996	24.0	2.7	8.1	9.3
1997	24.9	2.6	8.5	9.9
1998	26.2	1.1	13.3	11.5
1999	28.5	1.7	11.2	13.3
2000	32.6	2.8	17.9	16.6

Tables 13, 14 and 15

A decision on a planning application must be made by the planning authority within a period of two months. This period can be extended in two ways.

The first occurs when a planning authority requests additional information (S26 of the 1963 Act, Art. 33 of the 1994 Regulations). A second procedure, requiring the written consent of the applicant, allows the planning authority to extend the two-month period. This provision was introduced in the 1976 Act (Table 15).

Table 14 gives the total figures for both procedures. Table 15 gives the figures for the extension provision introduced in the 1976 Act.

In 1989 and in previous years deferred applications referred only to those arising from 'request for further information'. From 1990 onwards 'deferrals' also include cases dealt with under this second procedure.

Deferrals arising from the 1976 Act are increasing as a percentage of total deferrals: 1996: 14%; 1997:20%; 1998:24%; 1999: 23%; 2000: 0%

Table 13: Applications Deferred by Type of Application

Year	Type of Application ¹						Total
	Outline Permission		Approval		Permission		
1991	1 786	(14.4)	155	(1.3)	10 444	(84.3)	12 798
1992	1 890	(15.2)	169	(1.4)	10 399	(83.5)	12 458
1993	1 651	(15.7)	218	(2.1)	8 651	(82.2)	10 520
1994	1 536	(13.6)	266	(2.4)	9 471	(84.0)	11 273
1995	1 628	(13.2)	239	(1.9)	10 432	(84.8)	12 299
1996	1 972	(13.3)	307	(2.1)	12 559	(84.6)	14 838
1997	2 438	(14.7)	351	(2.1)	13 816	(83.2)	16 605
1998	3 193	(15.4)	447	(2.2)	17 061	(82.4)	20 701
1999	5 179	(18.9)	660	(2.4)	21 613	(78.7)	27 452
2000	5 934	(19.9)	889	(3.0)	22 993	(77.1)	29 816

Note 1: *The figures for the categories outline permission, approval and permission for 1991 underestimated the real figures and did not add up to the total number of deferred applications because of data missing for certain planning authorities.*

Table 14: Applications Deferred as Percentage of Applications ¹

Area	Deferred total 1999	Deferral rate	Deferred total 2000	Deferral rate	Change in rate '99 to '00
Carlow	375	38.1	400	39.9	1.8
Cavan	445	26.2	735	35.7	9.5
Clare	1 296	45.6	1 172	41.9	(3.7)
Cork	2 934	38.0	2 305	25.4	(12.6)
Donegal	1 619	29.3	1 976	33.4	4.1
Dun Laoghaire/Rathdown	401	17.2	458	19.8	2.6
Fingal	708	28.1	591	26.3	(1.8)
Galway	1 806	32.3	2 215	36.0	3.7
Kerry	1 009	24.5	1 477	32.4	7.9
Kildare	1 474	56.3	1 337	48.4	(7.9)
Kilkenny	750	36.1	947	43.3	7.2
Laois	555	36.9	600	44.4	7.5
Leitrim	250	27.1	411	33.1	6.0
Limerick	1 065	40.4	1 478	52.0	11.6
Longford	317	39.0	310	34.2	(4.8)
Louth	792	33.1	933	42.4	9.3
Mayo	1 659	45.9	1 525	42.4	(3.5)
Meath	920	33.2	841	30.1	(3.1)
Monaghan	505	38.4	778	50.1	11.7
Offaly	814	48.5	734	47.4	(1.1)
Roscommon	469	31.7	718	35.4	3.7
Sligo	405	30.9	310	21.0	(9.9)
South Dublin	770	43.8	591	35.9	(7.9)
Tipperary NR	557	34.6	674	40.8	6.2
Tipperary SR	298	17.5	451	26.5	9.0
Waterford	496	33.2	566	33.7	0.5
Westmeath	772	40.7	861	47.0	6.3
Wexford	1 460	35.6	1 795	37.6	2.0
Wicklow	885	38.6	954	41.7	3.1
Sub-total	25 806	35.2	28 143	36.0	0.8
Cork	182	17.3	165	15.9	(1.4)
Dublin	882	21.7	681	15.9	(5.8)
Galway	402	46.5	198	22.0	(24.5)
Limerick	73	16.2	144	32.7	16.5
Waterford	107	20.9	102	20.2	(0.7)
Sub-total	1 646	23.7	1 290	18.0	(17.2)
Total	27 452	34.2	29 433	34.5	0.3

Note 1: See text in introduction to table. This table should be read in conjunction with the following Table 15. The data in Table 15 are incorporated in the figures in this table.

Table 15: Applications where Consideration Time has been Extended (S26(4A) of 1963 Act as amended)

Area	1995	1996	1997	1998	1999	2000
Carlow	1	3	2	4	18	33
Cavan	7	6	6	5	16	26
Clare	17	148	115	134	214	406
Cork	327	428	489	417	606	48
Donegal	58	109	110	173	179	201
Dun Laoghaire/Rathdown	40	32	54	49	27	32
Fingal	95	103	333	132	708	591
Galway	164	142	255	339	505	690
Kerry	73	75	467	74	221	502
Kildare	49	54	227	541	856	1 932
Kilkenny	52	84	80	87	189	153
Laois	25	11	24	11	28	15
Leitrim	1	0	2	4	6	24
Limerick	52	54	32	74	130	0
Longford	23	2	12	14	6	0
Louth	40	62	89	145	201	224
Mayo	72	68	98	248	139	365
Meath	24	42	41	100	331	401
Monaghan	7	8	9	8	9	21
Offaly	4	9	7	32	52	77
Roscommon	3	8	18	56	111	128
Sligo	19	39	30	134	78	126
South Dublin	18	15	11	193	187	199
Tipperary NR	29	27	33	60	133	313
Tipperary SR	8	18	11	20	53	69
Waterford	2	7	17	14	21	39
Westmeath	10	12	127	430	161	844
Wexford	5	15	21	75	20	12
Wicklow	18	222	81	217	361	797
Sub-total	1 186	1 615	1854	4390	5566	8 268
Cork	N/A	51	113	63	47	0
Dublin	158	173	121	528	574	609
Galway	7	11	19	36	32	37
Limerick	0	10	12	11	17	25
Waterford	19	26	9	8	16	3
Sub-total	184	271	274	646	686	674
Total	1 370	1 886	2128	5 036	6252	8 942

Tables 16 and 17

Tables 16 and 17 give information on the use of procedures through which elected representatives can influence the planning control process: S4 of the City and County Management (Amendment) Act, 1955, and the procedure of material contravention of the development plan, as provided for in the 1976 Act.

While only limited use is made of these procedures overall, some authorities do use them to a considerable extent. The S4 procedure was used in 6 authorities. Four county authorities account for 96.3% of the total usage.

By virtue of section 26(3)(c) of the 1963 Act, a section 4 motion which, if passed, would result in a material contravention of the development plan, lapses and the material contravention procedures come into operation. Accordingly, those section 4 motions which have been superseded by the material contravention procedures are now listed separately. They then appear on the Council agenda as material contraventions.

Sections 44 and 45 of the Local Government Act, 1991 introduced changes in both procedures from 7 June 1991. In both cases a decision to grant planning permission requires the vote of not less than three quarters of the members of the Council in favour. 1995's figures for 'S4 Motions' showed an unprecedented reduction of 58.5 per cent, and this figures did not change substantially in 1996. There were only minor changes in the numbers of S4 on the agenda during 1997 and 1998. There was however an increase of over 50% (15 instances) in 1999. The increase in the number of 'material contraventions' was in the order of ten per cent. A dramatic increase (72% or 34 instances) in the number of S4 on the agenda was evident in 2000. However, the increase in the number of 'material contraventions' resulting from Section 4 motions in 2000 was 27% or 6 instances (i.e. a total of 28 material contraventions in 2000). The overall number of material contraventions passed by local authorities in 2000 was 132. This represented a 4.3% decrease on the 138 material contraventions passed in 1999.

Table 16 Applications where either S4 Procedure or the Procedure for Material Contravention of the Development Plan was followed

Procedure	1995	1996	1997	1998	1999	2000
- S4 Procedure						
• On Agenda	39	37	28	32	47	81
• Passed by Council	12	9	3	8	11	34
• Superseded by Material Contravention	16	18	18	20	22	28
- Material Contravention						
• Notice of Intention	84	95	106	142	156	141
• Passed by Council	74	82	88	122	138	132

Table 17: Applications where either S4 or Material Contravention Procedures were used

Area	SECTION 4 MOTIONS			MATERIAL CONTRAVENTIONS	
	Agenda	Passed	Superseded by Material Contravention	Agenda	Passed
Carlow	0	0	0	1	1
Cavan	0	0	0	0	0
Clare	0	0	0	7	7
Cork	0	0	0	7	6
Donegal	28	11	12	13	14
Dun Laoghaire/Rathdown	0	0	0	0	0
Fingal	0	0	0	0	0
Galway	0	0	0	16	16
Kerry	30	12	3	9	9
Kildare	0	0	0	9	8
Kilkenny	0	0	0	8	7
Laois	0	0	0	4	4
Leitrim	0	0	0	2	1
Limerick	0	0	0	0	0
Longford	0	0	0	0	0
Louth	2	0	2	7	7
Mayo	0	0	0	1	1
Meath	0	0	0	0	0
Monaghan	0	0	0	0	0
Offaly	0	0	0	1	1
Roscommon	0	0	0	0	0
Sligo	0	0	0	1	0
South Dublin	0	0	0	2	2
Tipperary Nr	1	0	1	1	0
Tipperary Sr	0	0	0	13	13
Waterford	0	0	0	1	1
Westmeath	0	0	0	11	11
Wexford	10	2	10	10	9
Wicklow	10	9	0	8	6
Subtotal	81	34	28	132	124
Cork	0	0	0	1	1
Dublin	0	0	0	0	0
Galway	0	0	0	2	2
Limerick	0	0	0	0	0
Waterford	0	0	0	6	6
Subtotal	0	0	0	9	9
Total	81	34	28	141	133

Tables 18, 18A and 19

Table 18 provides information on the type of development applied for in planning applications. It is derived from the information on planning fees and the land use categories that are defined in the Local Government (Planning & Development) Regulations, 1994. The 1994 Regulations give a slightly different fee class arrangement and there are some new classes not provided for in the 1984 Regulations. Table 18A, covering the years 1992 to 1994 is retained for comparison purposes.

Tables 18 and 19 provide data on the number of applications in each fee class. Small discrepancies may occur between the total number of applications in these tables and the actual number presented in Table 2. This can be for a number of reasons: certain applications are exempted from fees, other applications falling into different fee classes may have been counted more than once, and applications received in the earlier part of the year may have been withdrawn by year end.

In 2000 more than eight out of every ten applications were for residential development (class 1 and class 2 - dwelling houses and 'extensions').

Table 18: Planning Applications by Class of Development

Year	Class of development ¹															Total
	1	2	3	4	5	6	7	8	9	10	11	12	13	14	15	
1996	23237	13950	2184	230	7524	12	51	182	213	161	632	109	11	4	1931	50431
%	46.08	27.66	4.33	0.46	14.92	0.02	0.10	0.36	0.42	0.32	1.25	0.22	0.02	0.01	3.83	100.0
1997	27 642	14 826	1 564	120	8 503	8	58	163	201	163	652	103	34	14	2 160	56 649
%	48.8	26.2	2.8	0.2	15.0	0.0	0.1	0.3	0.4	0.3	1.2	0.2	0.1	0.0	3.8	100.0
1998	35 832	16 618	1 178	219	9 076	8	88	163	229	163	564	131	92	10	2 324	66 557
%	53.8	25.0	1.8	0.3	13.6	0.0	0.1	0.2	0.3	0.2	0.9	0.2	0.1	0.0	3.5	100.0
1999	46 804	18 841	1 357	249	8 865	3	51	211	225	156	503	80	26	9	2 313	79 693
%	58.7	23.6	1.7	0.3	11.1	0.0	0.1	0.3	0.3	0.2	0.6	0.1	0.0	0.0	2.9	100.0
2000	54 594	18 610	971	300	8 529	10	57	200	261	104	523	98	21	12	3 050	87 340
%	62.5	21.3	1.1	0.3	9.8	0.0	0.1	0.2	0.3	0.1	0.6	0.1	0.0	0.0	3.5	100.0

Table 18A: Planning Applications by Class of Development

Year	Class of development ²											Total
	1	2	3	4	5	6	7	8	9	10	11	
1992	18023	11193	1923	6960	73	196	137	178	697	55	1783	41218
%	43.7	27.2	4.7	16.9	0.2	0.5	0.3	0.4	1.7	0.1	4.2	100.0
1993	17469	10662	1733	6122	64	183	110	138	759	56	1559	38855
%	45.0	27.4	4.5	15.8	0.2	0.5	0.3	0.4	1.9	0.1	4.0	100.0
1994	19010	11676	2280	6237	159	175	97	138	668	52	1512	42011
%	45.3	27.8	5.4	14.9	0.4	0.4	0.2	0.3	1.6	0.1	3.6	100.0

- Notes:
1. As defined in Local Government (Planning and Development) Regulations, 1994. A small number of authorities did not provide a breakdown into fee classes. Consequently the total (see text in introduction) will not be equal to the sum of the fee classes.
 2. As defined in Local Government (Planning and Development) (Fees) Regulations, 1984

Table 19: Applications by Area and Class of Development 2000

Area	Class 1	Class 2	Class 3	Class 4	Class 5	Class 6	Class 7	Class 8
Carlow	612	222	17	5	95	0	2	0
Cavan	1 559	290	37	0	62	1	1	2
Clare	1 921	550	27	0	162	0	3	28
Cork	5 598	1 822	119	25	893	0	9	38
Donegal	4 596	704	36	4	408	1	4	16
Dun Laoghaire/Rathdown	511	1 308	1	3	353	0	0	6
Fingal	796	938	17	9	363	0	1	9
Galway	5 017	588	58	0	220	1	1	2
Kerry	3 540	485	50	42	213	0	2	8
Kildare	1 581	619	26	0	416	0	2	7
Kilkenny	1 319	489	81	14	210	0	0	5
Laois	828	301	22	9	140	1	3	2
Leitrim	928	206	12	0	66	0	0	0
Limerick	1 843	584	39	15	183	0	1	5
Longford	645	96	24	0	87	0	0	0
Louth	1 165	593	25	110	164	3	3	6
Mayo	4 910	540	32	0	367	0	5	0
Meath	1 409	794	63	36	340	0	7	1
Monaghan	1 064	205	30	0	180	0	0	0
Offaly	1 070	249	23	0	120	0	1	3
Roscommon	1 521	304	26	0	88	2	0	3
Sligo	1 011	235	17	0	148	0	4	1
South Dublin	393	769	4	5	342	0	0	7
Tipperary NR	1 211	267	27	2	81	0	0	1
Tipperary SR	1 096	319	46	3	180	0	0	1
Waterford	1 096	339	26	5	87	0	1	1
Westmeath	1 098	412	9	0	201	0	0	0
Wexford	3 550	734	52	9	341	1	5	6
Wicklow	1 187	608	23	4	241	0	2	1
Sub-total	53 075	15 570	969	300	6 751	10	57	159
Cork	218	480	0	0	258	0	0	1
Dublin	903	1 871	0	0	961	0	0	33
Galway	220	320	1	0	261	0	0	5
Limerick	76	192	0	0	115	0	0	0
Waterford	102	177	1	0	183	0	0	2
Sub-total	1 519	3 040	2	0	1 778	0	0	41
Total	54 594	18 610	971	300	8 529	10	57	200

Table 19: Applications by Area and Class of Development (Continued)

Area	Class 9	Class 10	Class 11	Class 12	Class 13	Class 14	Class 15	Total
Carlow	5	2	1	6	0	0	36	1 003
Cavan	0	4	8	2	0	0	91	2 057
Clare	2	1	3	4	0	3	96	2 800
Cork	52	14	33	7	5	2	443	9 060
Donegal	7	12	18	0	2	2	107	5 917
Dun Laoghaire/Rathdown	14	0	25	0	0	0	56	2 277
Fingal	23	1	20	1	1	0	70	2 249
Galway	1	3	1	4	1	0	262	6 159
Kerry	3	7	10	2	1	1	199	4 563
Kildare	1	1	18	0	0	0	94	2 765
Kilkenny	10	4	10	0	0	0	45	2 187
Laois	5	4	4	1	0	0	32	1 352
Leitrim	0	1	2	2	0	0	24	1 241
Limerick	10	1	9	4	1	0	148	2 843
Longford	0	1	1	1	0	0	52	907
Louth	20	3	37	9	0	1	60	2 199
Mayo	24	11	6	1	0	0	15	5 911
Meath	7	2	2	11	2	0	123	2 797
Monaghan	2	7	13	3	0	0	75	1 579
Offaly	0	1	3	1	0	0	78	1 549
Roscommon	0	2	0	5	1	1	34	1 987
Sligo	2	0	8	15	0	0	33	1 474
South Dublin	21	0	40	4	1	1	58	1 645
Tipperary NR	11	0	3	0	0	0	47	1 650
Tipperary SR	1	3	10	4	1	0	36	1 700
Waterford	8	2	9	1	0	0	75	1 650
Westmeath	1	5	5	0	1	0	98	1 830
Wexford	2	2	9	1	3	1	54	4 770
Wicklow	2	2	21	4	1	0	66	2 162
Sub-total	234	96	329	93	21	12	2 607	80 283
Cork	4	1	16	4	0	0	58	1 040
Dublin	19	4	118	1	0	0	264	4 174
Galway	2	1	37	0	0	0	51	898
Limerick	0	1	5	0	0	0	52	441
Waterford	2	1	18	0	0	0	18	504
Sub-total	27	8	194	5	0	0	443	7 057
Total	261	104	523	98	21	12	3 050	87 340

Tables 20 and 21

Tables 20 and 21 list the total amount of development contributions which planning authorities receive through the procedure of levying charges in planning conditions (Section 26(2)(g) and (h) of the 1963 Act).

The amount received in contributions has continued to rise since 1987 with an exceptional decline of approximately 2.5 per cent between 1992 and 1993. There was an increase of approximately 26% for 1997, 15% in 1998, 31% in 1999 and a further 27% increase in 2000. Increases or decreases in the figures, may be the result of a number of factors such as changes in the rates charged, size and type of developments carried out in a particular year, the overall level of implementation of planning permissions and perhaps increased enforcement of planning conditions.

Table 20: Development Contributions

Year	Total Sum Received	
	£	€
1987	5 181 562	6 579 227
1988	6 450 699	8 190 698
1989	9 016 987	11 449 212
1990	10 690 887	13 574 626
1991	12 348 630	15 679 526
1992	15 895 196	20 182 736
1993	15 483 241	19 659 661
1994	20 544 507	26 086 143
1995	22 398 667	28 440 440
1996	36 179 998	45 939 121
1997	45 531 558	57 813 153
1998	52 236 043	66 326 093
1999	68 653 475	87 171 931
2000	86 931 438	110 380 157

Table 21: Development Contributions by Area

Area	Contributions	
	1999	2000
Carlow	465 727	682 442
Cavan	571 345	772 066
Clare	1 281 083	1 053 641
Cork	5 810 690	7 955 605
Donegal	1 935 041	1 578 127
Dun Laoghaire/Rathdown	3 868 167	4 708 272
Fingal	9 578 373	10 720 724
Galway	1 182 726	2 247 996
Kerry	1 107 710	1 306 780
Kildare	3 995 167	5 062 999
Kilkenny	566 437	750 078
Laois	615 150	1 364 256
Leitrim	172 190	507 070
Limerick	1 297 100	1 285 378
Longford	159 219	527 673
Louth	2 400 714	3 363 571
Mayo	1 425 626	1 522 951
Meath	2 834 004	4 747 940
Monaghan	175 450	22 650
Offaly	680 198	1 111 588
Roscommon	373 010	924 582
Sligo	52 600	428 215
South Dublin	7 500 000	8 586 000
Tipperary NR	357 026	506 906
Tipperary SR	744 111	1 060 662
Waterford	1 042 978	1 590 085
Westmeath	935 150	1 530 093
Wexford	2 634 504	3 557 940
Wicklow	2 813 901	2 437 620
Sub-total	56 575 397	71 913 920
Cork	1 369 665	1 515 572
Dublin	7 188 845	8 319 470
Galway	2 193 886	2 774 821
Limerick	660 215	989 141
Waterford	665 467	1 418 512
Sub-total	12 078 078	15 017 518
Total	68 653 475	86 931 438

II Enforcement

Tables 22, 23, 24 and 24A

These tables give information on the number of enforcement cases under three principal procedures:

- Prosecution under Section 24 of the 1963 Act (as amended);
- Serving of an Enforcement Notice under Sections 31 and 35 as well as Sections 32, 36 and 37 of the 1963 Act;
- Serving of a Warning Notice under Section 26 of the 1976 Act (as amended).

Where S24 of the 1963 Act and S26 of the 1976 Act (both as amended) are concerned, convictions include both summary prosecution and prosecution on indictment. 'Cases initiated' under these sections include only those cases where legal proceedings have been brought, whereas under the other sections (i.e. enforcement notice) such cases refer to the number of notices that have been issued, not all of which would have necessitated further action in the courts.

Table 24A gives the figures for compliance with these notices and for which therefore no further action was required. This is the fifth year for which this information has been collected. As the issuing of the notice and the compliance with it need not necessarily take place within the same reporting year these tables will be better evaluated in the light of next year's returns.

Table 22: Enforcement Cases Initiated, by Procedure

Enforcement procedure	1995	1996	1997	1998	1999	2000
S24 1963 Act	38	40	20	6	27	59
S31 1963 Act	916	948	874	952	1 070	1 173
S32 1963 Act	7	4	1	6	14	12
S35 1963 Act	73	55	85	61	51	29
S36 1963 Act	2	0	0	0	0	0
S37 1963 Act	0	2	0	0	0	0
S26 1976 Act	301	379	293	272	234	381
Total	1 337	1 428	1 273	1 297	1 396	1 654

Table 23: Enforcement Cases Convicted, by Procedure

Enforcement procedure	1995	1996	1997	1998	1999	2000
S24 1963 Act	4	10	3	3	2	22
S31 1963 Act	126	221	189	203	185	226
S32 1963 Act	0	1	0	0	0	0
S35 1963 Act	7	9	8	10	18	2
S36 1963 Act ¹	-	-	-	-	-	0
S37 1963 Act	0	2	0	0	0	0
S26 1976 Act	47	28	20	33	5	2
Total	184	271	220	249	210	252

Note 1: S36 makes no provision for conviction

Table 24: Enforcement Cases Initiated and Convicted by Area and Procedure in 2000

Area	S24/1963		S26/1976		S31/1963		S32/1963		S35/1963	
	I	C	I	C	I	C	I	C	I	C
Carlow	0	0	0	0	13	3	1	0	0	0
Cavan	0	0	11	0	4	0	0	0	0	0
Clare	0	0	15	0	69	11	0	0	0	0
Cork	0	0	0	0	52	5	0	0	1	0
Donegal	0	0	0	0	47	16	2	0	9	1
Dun Laoghaire/Rathdown	0	0	4	1	32	11	0	0	0	0
Fingal	46	21	7	0	92	30	0	0	0	0
Galway	0	0	31	0	53	16	0	0	0	0
Kerry	0	0	2	0	94	2	0	0	10	0
Kildare	0	0	17	0	120	1	0	0	0	0
Kilkenny	6	1	0	0	68	1	0	0	0	0
Laois	0	0	0	0	33	2	0	0	0	0
Leitrim	0	0	0	0	4	0	0	0	0	0
Limerick	2	0	6	0	7	0	0	0	0	0
Longford	0	0	1	0	0	0	0	0	0	0
Louth	0	0	1	0	26	5	3	0	0	0
Mayo	0	0	140	0	0	0	0	0	0	0
Meath	0	0	0	0	0	0	0	0	0	0
Monaghan	0	0	26	0	4	0	1	0	0	0
Offaly	2	0	1	0	13	1	0	0	1	0
Roscommon	0	0	0	0	0	0	0	0	0	0
Sligo	0	0	2	0	27	12	1	0	2	0
South Dublin	0	0	0	0	54	13	0	0	0	0
Tipperary NR	0	0	1	0	1	1	0	0	0	0
Tipperary SR	0	0	3	0	57	27	0	0	1	1
Waterford	0	0	5	1	16	0	3	0	0	0
Westmeath	2	0	1	0	0	0	0	0	0	0
Wexford	1	0	24	0	88	24	0	0	1	0
Wicklow	0	0	76	0	85	3	0	0	4	0
Sub-total	58	22	374	2	1 063	183	12	0	29	2
Cork	0	0	1	0	15	4	0	0	0	0
Dublin	0	0	2	0	17	6	0	0	0	0
Galway	0	0	4	0	71	28	0	0	0	0
Limerick	0	0	0	0	6	4	1	0	0	0
Waterford	0	0	0	0	5	0	0	0	0	0
Sub-total	0	0	7	0	114	42	1	0	0	0
Total	58	22	381	2	1 177	225	13	0	29	2

I = Initiated and C = Convicted

Table 24A: Enforcement Notices - Compliance

Area	S31/1963	S32/1963	S35/1963	S36/1963	S37/1963
Carlow	0	1	0	0	0
Cavan	0	0	0	0	0
Clare	51	0	0	0	0
Cork	26	0	1	0	0
Donegal	6	0	1	0	0
Dun Laoghaire/Rathdown	0	0	0	0	0
Fingal	62	0	0	0	0
Galway	17	0	0	0	0
Kerry	61	0	4	0	0
Kildare	111	0	0	0	0
Kilkenny	53	0	0	0	0
Laois	14	0	0	0	0
Leitrim	4	0	0	0	0
Limerick	3	0	0	0	0
Longford	0	0	0	0	0
Louth	3	0	0	0	0
Mayo	0	0	0	0	0
Meath	0	0	0	0	0
Monaghan	0	0	0	0	0
Offaly	9	0	1	0	0
Roscommon	0	0	0	0	0
Sligo	15	0	0	0	0
South Dublin	16	0	0	0	0
Tipperary NR	0	0	0	0	0
Tipperary SR	26	0	0	0	0
Waterford	11	1	0	0	0
Westmeath	0	0	0	0	0
Wexford	13	0	0	0	0
Wicklow	20	0	1	0	0
Sub-total	521	2	8	0	0
Cork	9	0	0	0	0
Dublin	3	0	0	0	0
Galway	0	0	0	0	0
Limerick	2	0	0	0	0
Waterford	5	0	0	0	0
Sub-total	19	0	0	0	0
Total	540	2	8	0	0

Tables 25A, 25B, 26A and 26B

The fourth principal enforcement procedure is based on the jurisdiction of the High Court and the Circuit Court to grant injunctions where unauthorised development is taking place. Not only the planning authority but any member of the public can make an application to the Court under Section 27 of the 1976 Act (as amended). The use of this procedure has therefore been separated into two categories: initiation by the planning authority and initiation by 'other bodies or individuals.'

As both statistics are based on figures provided by the planning authorities, the second category may be underestimated because the planning authority need not necessarily be aware of applications by third parties.

Table 25A Applications for Injunction Order to High Court S27 1976 Act (as amended)

Year	Applications by Planning Authority		Applications by Others	
	Number of applications	Number granted	Number of applications	Number granted
1993	35	19	5	2
1994	35	15	3	1
1995	66	20	2	2
1996	42	27	2	1
1997	29	17	0	0
1998	51	25	1	0
1999	53	26	1	1
2000	60	29	2	1

Table 25B Applications for Injunction Order to Circuit Court

Year	Applications by Planning Authority		Applications by Others	
	Number of applications	Number granted	Number of applications	Number granted
1993	22	9	3	2
1994	30	16	2	2
1995	21	8	0	0
1996	37	17	2	2
1997	37	13	2	2
1998	52	31	2	0
1999	71	23	3	3
2000	66	27	5	4

Data on applications to the Circuit Court were collected for 1992 for the first time when there was zero return.

Table 26A: Applications for Injunction Order to the High Court S27 1976, by Area

Area	By Planning Authority		Applications by Others	
	Number of applications	Number granted	Number of applications	Number granted
Carlow	0	0	0	0
Cavan	0	0	0	0
Clare	0	0	0	0
Cork	0	0	1	1
Donegal	0	0	0	0
Dun Laoghaire/Rathdown	1	0	0	0
Fingal	13	12	0	0
Galway	0	0	0	0
Kerry	0	0	0	0
Kildare	3	3	0	0
Kilkenny	1	1	0	0
Laois	1	1	0	0
Leitrim	1	0	1	0
Limerick	0	0	0	0
Longford	0	0	0	0
Louth	1	0	0	0
Mayo	1	0	0	0
Meath	2	1	0	0
Monaghan	1	0	0	0
Offaly	0	0	0	0
Roscommon	0	0	0	0
Sligo	0	0	0	0
South Dublin	7	1	0	0
Tipperary NR	0	0	0	0
Tipperary SR	0	0	0	0
Waterford	0	0	0	0
Westmeath	13	0	0	0
Wexford	0	0	0	0
Wicklow	1	1	0	0
Sub-total	46	20	2	1
Cork CB	0	0	0	0
Dublin CB	14	9	0	0
Galway CB	0	0	0	0
Limerick CB	0	0	0	0
Waterford CB	0	0	0	0
Sub-total	14	9	0	0
Total	60	29	2	1

Table 26B: Applications for Injunction Order to the Circuit Court

Area	By Planning Authority		Applications by Others	
	Number of applications	Number granted	Number of applications	Number granted
Carlow	0	0	0	0
Cavan	0	0	0	0
Clare	3	0	0	0
Cork	1	1	0	0
Donegal	11	9	0	0
Dun Laoghaire/Rathdown	0	0	0	0
Fingal	0	0	0	0
Galway	6	0	0	0
Kerry	5	3	2	2
Kildare	1	1	0	0
Kilkenny	3	2	0	0
Laois	0	0	0	0
Leitrim	0	0	0	0
Limerick	10	7	1	0
Longford	0	0	0	0
Louth	0	0	0	0
Mayo	3	2	2	2
Meath	0	0	0	0
Monaghan	3	0	0	0
Offaly	0	0	0	0
Roscommon	0	0	0	0
Sligo	0	0	0	0
South Dublin	0	1	0	0
Tipperary NR	0	0	0	0
Tipperary SR	1	0	0	0
Waterford	0	0	0	0
Westmeath	0	0	0	0
Wexford	1	1	0	0
Wicklow	1	0	0	0
Sub-total	49	27	5	4
Cork CB	0	0	0	0
Dublin CB	0	0	0	0
Galway CB	17	0	0	0
Limerick CB	0	0	0	0
Waterford CB	0	0	0	0
Sub-total	17	0	0	0
Total	66	27	5	4

III Fees and Administration

Tables 27, 28, 29, 30 and 31

The changes in fee class classification are noted in the introduction to Tables 18 and 19. Tables 27, 28 and 29 deal with planning application fees. The total sum received from planning application fees decreased in the years 1991 to 1993. In subsequent years increases were partially explained by the increase in fees in the 1994 Regulations. Increases over the previous two years - 1998; 35%, 1999; 24% - are attributable to the increase in the number of applications

As in previous years, planning fees for Class 5 applications (previously class 4) continued to be quite high. Though

amounting to only fourteen per cent of all applications, class 5 continues to account for almost sixty per cent of fees.

Table 29 gives a detailed account of the fees received in each area specified by class of development (see Appendix A for the type of land use in each class). Tables 30 and 31 give the fees received under a number of other categories.

Table 27: Total Amount Received in Application Fees by Class of Development - with Percentage Breakdown*

2000	£s	Percentage	2000	£s	Percentage
Class 1	9 449 281	35.19	Class 9	58 129	0.22
Class 2	1 005 617	3.75	Class 10	63 341	0.24
Class 3	166 372	0.62	Class 11	106 714	0.40
Class 4	312 441	1.16	Class 12	18 603	0.07
Class 5	14 230 814	53.00	Class 13	7 098	0.03
Class 6	12 031	0.04	Class 14	1 010	0.0
Class 7	86 520	0.32	Class 15	1 267 000	4.72
Class 8	66 387	0.25			
Total				26 851 358	100

Table 28: Total Amount Received in Application Fees by Class of Development

Class of Development	1995	1996	1997	1998	1999	2000	
						£	€
2	327 311	385 744	460 395	531 920	646 980	1 005 617	1 276 870
3	227 210	203 303	173 389	154 390	205 930	166 372	211 249
4	18 980	103 373	20 538	131 433	128 635	312 441	396 718
5	5 817 246	7 216 525	9 164 623	11 806 166	13 611 842	14 230 814	18 069 407
6	767	22 044	777	1 103	550	12 031	15 276
7	76 631	75 528	93 706	141 404	149 618	86 520	109 857
8	36 417	46 985	54 651	114 923	130 804	66 387	84 294
9	42 923	44 376	65 128	88 702	47 918	58 129	73 809
10	36 271	48 963	54 688	58 730	72 078	63 341	80 426
11	71 365	129 750	113 263	119 754	124 393	106 714	135 499
Total	6 705 121	8 276 591	10 201 158	13 148 525	15 118 748		

Table 29: Amount Received in Application Fees by Area and Class of Development

Area	Class 1	Class 2	Class 3	Class 4	Class 5	Class 6	Class 7	Class 8
Carlow	90 452	7 115	3 062	1 584	186 048	0	599	0
Cavan	268 209	11 694	5 018	0	49 265	10 256	3 570	15 058
Clare	232 656	29 563	2 021	0	134 435	0	1 564	1 337
Cork	812 763	62 948	11 436	447	1 135 635	0	4 803	6 558
Donegal	462 724	29 880	5 068	208	536 140	187	910	832
Dun Laoghaire/Rathdown	220 169	36 782	24	633	660 893	0	0	770
Fingal	594 213	28 587	9 780	5 274	1 195 348	0	4 232	16 400
Galway	574 089	52 027	5 273	0	123 681	35	728	203
Kerry	439 260	20 859	5 011	65 487	229 477	0	2 730	2 178
Kildare	458 091	25 090	11 109	0	816 497	0	9 273	5 637
Kilkenny	229 414	16 459	6 088	1 019	261 189	0	0	1 315
Laois	257 355	301 853	7 074	956	187 422	609	2 467	189
Leitrim	209 180	9 746	1 474	0	135 547	0	0	0
Limerick	233 471	17 980	5 621	1 743	424 565	0	365	297
Longford	146 753	6 856	7 534	0	135 980	0	0	0
Louth	327 862	22 764	17 380	181 194	232 851	642	3 422	1 317
Mayo	348 610	17 325	16 652	0	453 340	0	20 361	0
Meath	368 567	24 790	9 510	5 449	715 868	0	21 164	705
Monaghan	152 209	7 306	4 591	0	233 487	0	0	0
Offaly	280 955	10 812	2 099	0	164 872	0	58	549
Roscommon	183 450	19 830	2 828	0	161 697	232	0	1 150
Sligo	180 384	7 431	1 521	0	239 705	0	2 093	36
South Dublin	291 616	21 139	667	1 594	1 029 978	0	0	930
Tipperary NR	110 796	7 710	5 131	145	87 203	0	0	1618
Tipperary SR	160 014	15 601	4 181	465	193 851	0	0	291
Waterford	107 957	15 338	3 347	632	118 988	0	728	249
Westmeath	239 927	16 586	1 576	0	338 777	0	0	0
Wexford	420 869	29 779	5 388	808	374 361	257	5 551	1 520
Wicklow	277 495	27 166	5 852	1 468	364 452	0	2 631	1 456
Sub-total	8 679 510	901 016	166 316	269 106	10 921 552	12 218	87 249	60 595
Cork	129 398	21 112	0	0	462 413	0	0	286
Dublin	312 900	53 879	0	0	1 894 269	0	0	4 421
Galway	203 331	14 742	58	0	536 101	0	0	461
Limerick	46 770	7 701	0	0	267 089	0	0	0
Waterford	98 180	7 156	143	0	188 423	0	0	1 456
Sub-total	790 579	104 590	201	0	3 348 295	0	0	6 624
Total	9 470 089	1 007 103	166 515	269 104	14 269 847	12 218	87 430	67 219

Table 29: Amount Received in Application Fees by Area and Class of Development (Contd)

Area	Class 9	Class 10	Class 11	Class 12	Class 13	Class 14	Class 15	Fees Total
Carlow	846	1 178	401	846	0	0	23 402	315 532
Cavan	0	2 813	707	117	0	0	42 275	409 162
Clare	4 483	2 451	802	341	0	140	86 920	496 713
Cork	5 290	474	3 553	402	320	339	24 634	2 069 602
Donegal	703	14 896	977	0	87	104	37 913	1 090 630
Dun Laoghaire/Rathdown	2 506	146	4 345	0	0	0	4 716	930 985
Fingal	9 432	351	11 566	58	58	0	4 215	1 879 515
Galway	219	1 000	58	2 323	215	0	294 768	1 054 620
Kerry	511	3 103	1915	116	88	58	80 152	1 829 649
Kildare	146	1 908	3 394	0	0	0	36 848	1 367 994
Kilkenny	1 168	803	975	0	0	0	8 990	527 419
Laois	1 235	716	261	98	0	0	2 306	762 542
Leitrim	0	832	116	1 160	0	0	3 265	361 320
Limerick	1 637	248	1 483	290	108	0	76 074	763 882
Longford	0	146	330	61	0	0	44 484	342 145
Louth	3 588	0	12 227	741	0	35	71 900	875 924
Mayo	2 198	26 723	1 153	256	0	0	1 886	889 151
Meath	1 110	730	436	1 472	1 782	0	15 971	1 167 555
Monaghan	204	4 433	2 164	350	0	0	11 585	416 329
Offaly	0	1 567	275	58	0	0	48 200	509 445
Roscommon	0	3 128	0	1 770	58	146	41 147	415 436
Sligo	113	0	725	5 762	0	0	14 840	452 610
South Dublin	4 813	0	15 453	378	116	146	8 911	1 375 742
Tipperary NR	2007	292	920	0	0	0	5 149	220 960
Tipperary SR	847	612	1 667	808	1 136	0	18 579	398 052
Waterford	4 985	255	1 531	58	0	0	40 688	294 756
Westmeath	146	1 351	1 245	0	1 316	0	43 980	644 903
Wexford	376	2 345	739	390	1705	146	7 667	851 901
Wicklow	219	2 332	839	225	197	0	20 693	705 865
Sub-total	48 782	74 833	70 257	18 080	7 186	1 114	1 122 158	23 420 339
Cork	985	2 215	4 389	407	0	0	42 730	663 933
Dublin	3 625	827	18 049	58	0	0	52 983	2 341 011
Galway	292	146	9 791	0	0	0	48 449	813 372
Limerick	0	218	1 050	0	0	0	24 768	347 597
Waterford	163	146	3 816	0	0	0	1 946	301 429
Sub-total	5 065	3 552	37 095	465	0	0	170 876	4 467 342
Total	53 847	78 385	107 350	18 545	7 186	1 114	1 293 034	27 887 681

Table 30: Fees Received Other than Application Fees by Area and by Type of Fee¹

Area	Extension	Register	Licence	Exemption	Compliance	Miscellaneous	Total £
Carlow	0	562	1 250	101	77	5 266	7 256
Cavan	45	0	1 165	0	0	3 850	5 060
Clare	929	0	888	0	0	4 319	6 137
Cork	405	170	13 197	3 033	345	29 209	46 359
Donegal	980	0	5 635	0	150	20 263	27 028
Dun Laoghaire/Rathdown	45	12 752	0	0	240	25 298	38 335
Fingal	585	3 775	0	0	0	48 273	52 634
Galway	90	3 650	1 151	0	0	15 041	19 931
Kerry	120	0	922	0	540	42 075	43 657
Kildare	135	416	397	0	2 434	58 172	61 554
Kilkenny	118	1 000	0	2 620	0	4 500	8 238
Laois	40	0	441	0	0	10 266	10 747
Leitrim	0	292	486	0	0	2 035	2 813
Limerick	93	4 308	1 214	320	0	25 866	31 801
Longford	45	0	0	0	0	3 025	3 070
Louth	225	0	1 079	60	0	37 921	39 285
Mayo	15 899	135	896	0	0	3 118	20 048
Meath	85	812	1 469	365	3 720	21 192	27 643
Monaghan	0	1 391	2 672	0	1 220	3 489	8 772
Offaly	45	160	45	0	25	2 780	3 055
Roscommon	0	0	3 822	0	1 585	9 267	14 674
Sligo	90	0	1 631	0	829	6 643	9 193
South Dublin	135	5 930	0	0	0	4 936	11 001
Tipperary NR	260	1 922	2 290	10	860	2 316	7 658
Tipperary SR	0	942	5 439	300	1 650	17 914	26 246
Waterford	135	0	4 734	0	0	7 220	12 089
Westmeath	180	0	1 927	294	1 017	5 207	8 625
Wexford	0	0	20	70	0	30 644	30 734
Wicklow	270	0	951	210	320	24 792	26 543
Sub-total	20 954	38 217	53 720	7 383	15 012	474 897	610 183
Cork	90	0	286	0	0	13 936	14 312
Dublin	450	10 541	0	0	0	34 923	45 914
Galway	0	0	419	0	0	9 821	10 240
Limerick	0	0	922	0	4 095	4 935	9 952
Waterford	45	0	450	0	2 770	0	3 265
Sub-total	585	10 541	2 077	0	6 865	63 615	83 683
Totals	21 539	48 758	55 797	7 383	21 877	538 512	693 866

Note 1: The categories of Fees and Income are:

Extension and further extension application fees (Local Government (Planning and Development) Regulations, 1994) Sixth Schedule

Register fees (Local Government Planning and Development) Regulations, 1994) Sixth Schedule

Licence fees (S.89, 1963 Act) (Local Government Planning and Development) Regulations, 1994) Seventh Schedule

Fees for letters or certificates that development is exempt

Fees for letters or certificates that conditions/permission complied with, etc.

Miscellaneous - e.g. copies of documents, etc.

Table 31: Total Amount Received in Fees by Type of Fee

Type of fee	1996	1997	1998	1999	£	2000	€
Application fees, gross	11 928 216	13 561 467	19 433 307	24 077 947	25 705 002	32 638 620	
Application fees, refunds	- 270 071	- 301 134	- 312 478	- 562 744	423 226	537 387	
Application fees, net	11 658 145	13 260 333	19 120 829	23 445 203	25 281 776	32 101 233	
Other fees total	408 668	471 246	570 852	605 848	686 698	871 927	
Total	12 066 813	13 731 579	19 691 681	24 051 051	25 968 474	32 973 160	

Tables 32, 33, 34 and 35

Tables 32 and 34 give a breakdown of staff by full/part time and technical/ administrative. The category 'part time' includes part time employees as well as full time employees who are involved in planning work for only part of their time. The total staff complement has been calculated as the sum of technical and administrative staff. Technical staff include fire officers, health officers, etc., who are for part of their time involved with planning control duties.

Over three-quarters of staff involved in planning in the local authorities are full time. Reporting on the category "part-time" has been uneven and the category may not be correctly interpreted by all authorities.

Tables 33 and 35 give the costs involved in operating the planning control procedures. Costs are estimated in two ways. The first category deals with costs as given under Programme Group 4 (Planning and Development) of the annual estimates, while the second column gives an estimate of planning control costs as estimated by the planning authority. These are calculated by excluding costs of development plans, other development and promotion and industrial development from Programme Group 4, while adding staff costs from Programme Group 8 (Miscellaneous) which relate to planning control.

However, these figures can be treated in some instances only as estimates of staff numbers and costs. In comparing figures with previous years it must be taken into account that data are not always available for all authorities and that differences in interpretation continue to occur.

Table 32: Staff

Year	Full-time	Part-time	Technical	Administrative	Total
1991	687	422	617	492	1 109
1992	695	421	617	499	1 116
1993	706	367	601	472	1 073
1994	694	357	573	478	1 051
1995	696	337	545	488	1 033
1996	711	336	537	510	1 047
1997	759	355	579	535	1 114
1998	810	304	589	525	1 114
1999	955	334	661	628	1 289
2000	1 000	333	733.5	599.5	1 333

Note 1: *The total staff complement has been calculated as the sum of technical and administrative staff. Small discrepancies with full time/part time staff data may occur.*

Table 33: Costs of Planning Control

Year	Costs of Programme 4		Costs of Planning Control	
	£s	€	£s	€
1992	31 583 768	40 103 113	16 795 877	21 326 365
1993	22 278 976	28 288 464	15 599 945	19 807 844
1994	33 518 017	42 559 102	19 497 809	24 757 111
1995	35 633 676	45 245 435	19 699 031	25 012 610
1996	33 334 066	42 325 533	19 894 749	25 261 120
1997	36 421 137	46 245 305	22 216 064	28 208 582
1998	38 273 724	48 597 605	25 896 743	32 882 081
1999	46 908 846	59 561 948	27 124 398	34 440 881
2000	50 652 031	64 314 813	33 968 136	43 130 636

Table 34: Staff by Area

Area	Technical		Administrative		Total
	Full time	Part time	Full time	Part time	
Carlow	3	8	7	4	22
Cavan	6	15	9	3	33
Clare	17	4	23	2	46
Cork	43	39	6	16	104
Donegal	18	19	23.5	3	63.5
Dun Laoghaire/Rathdown	22	0	33	0	55
Fingal	38	6	48	0	92
Galway	21	13	27	0	61
Kerry	18	4	20	5	47
Kildare	14	17	13	4	48
Kilkenny	9.5	3	7	1	20.5
Laois	6	0	7	0	13
Leitrim	7	6	7	0	20
Limerick	15	5	16	1	37
Longford	3	6	1	2	12
Louth	9	11	13	4	37
Mayo	8	5	7	5	25
Meath	15	1	20	3	39
Monaghan	4	7	5	3	19
Offaly	9	1	10	0	20
Roscommon	4	0	6	0	10
Sligo	7	11	11	0	29
South Dublin	23	10	35	0	68
Tipperary NR	6	0	7	6	19
Tipperary SR	10	3	7	13	33
Waterford	5	0.5	6	0.5	12
Westmeath	11	12	9	5	37
Wexford	14	4	18	3	39
Wicklow	17	12	18.5	3	50.5
Sub-total	382.5	222.5	420	86.5	1 111.5
Cork CB	16	7	11	3	37
Dublin CB	76.5	0	57	0	133.5
Galway CB	10	0	10	0	20
Limerick CB	4	9	5	3	21
Waterford CB	5	1	3	1	10
Sub-total	111.5	17	86	7	221.5
Total	494	239.5	506	93.5	1 333

Table 35: Costs of Planning Control by Area *1

Area	Cost of Programme 4		Cost of Planning Control	
	£s	€s	£s	€s
Carlow	187 767	238 415	288 285	366 046
Cavan	982 133	1 247 052	696 321	884 145
Clare	919 261	1 167 221	832 800	1 057 438
Cork	6 859 107	8 709 269	2 119 822	2 691 619
Donegal	264 223	335 494	1 398 427	1 775 636
Dun Laoghaire/Rathdown	2 469 600	3 135 745	1 371 900	1 741 954
Fingal	4 676 500	5 937 930	3 121 900	3 963 995
Galway	28 923	36 725	1 845 257	2 342 993
Kerry	2 136 663	2 713 002	1 238 091	1 572 051
Kildare	2 200 476	2 794 028	204 739	259 965
Kilkenny	893 368	1 134 343	596 343	757 199
Laois	863 667	1 096 631	712 505	904 695
Leitrim	510 189	647 806	508 818	646 066
Limerick	1 474 098	1 871 718	934 915	1 187 097
Longford	22 933	29 119	492 571	625 436
Louth	827 214	1 050 345	727 257	923 426
Mayo	82 902	105 264	27 500	34 918
Meath	1 497 792	1 901 804	1 245 776	1 581 809
Monaghan	114 336	145 177	394 650	501 102
Offaly	524 462	665 929	462 176	586 842
Roscommon	478 890	608 065	280 015	355 546
Sligo	644 307	818 101	562 630	714 393
South Dublin	3 670 700	4 660 828	2 402 900	3 051 054
Tipperary NR	656 811	833 978	686 185	871 275
Tipperary SR	704 338	894 325	508 848	646 104
Waterford	895 066	1 136 499	461 000	585 349
Westmeath	291 358	369 948	622 470	790 374
Wexford	1 130 699	1 435 692	790 758	1 004 056
Wicklow	91 220	115 826	214 463	272 312
Sub-total	36 099 003	45 836 279	25 749 322	32 694 895
Cork CB	1 139 186	1 446 468	1 412 300	1 793 251
Dublin CB	12 275 750	15 586 987	5 461 898	6 935 180
Galway CB	455 830	578 785	527 390	669 647
Limerick CB	485 222	616 105	582 226	739 275
Waterford CB	197 040	250 189	235 000	298 388
Sub-total	14 553 028	18 478 534	8 218 814	10 435 741
Total	50 652 031	64 314 813	33 968 136	43 130 636

IV Other

Tables 36, 37, and 38

The Local Government (Planning and Development) Act 1990, which consolidated and amended the law on planning compensation, took effect from June 10, 1990. Up to 1994 data on compensation were provided in two tables to take account of claims lodged under 1963 legislation. All new claims are now made under 1990 legislation. Table 36 provides a summary from the year 1990 onwards and gives additional information on the number and cost of claims which were 'otherwise disposed of'. Nine notices were served under Section 29 of 1963 (Obligation to purchase land).

Apart from the year 1990 when claims to the value of £41m were lodged, the amount of claims from 1987 to 1992 was between £9m and £11m. The 1993 figure, in excess of £1.3m, represented an 85 per cent decrease over the previous year and the amount claimed in 1994, £0.33m, represented a further decrease of 76 per cent. The figure for 1995 was £0.77m. There were no claims in 1996 and the five claims registered in 1997 were all disposed of. The small number of claims made no longer justifies a table by 'Area'. Seven claims were made in 1998, none in 1999 and nine in 2000.

Table 36: Claims for Compensation ¹

Year	No	Claims		Number paid	Amount paid £s	No	'Disposed'	
		Amount £s					Value £s	
1990	23	41 035 394		3	80 000	15	12 496 900	
1991	22	11 162 505		3	25 000	11	6 966 985	
1992	9	9 053 348		2	34 000	9	3 356 000	
1993	6	1 363 000		5	171 700	8	2 051 000	
1994	5	325 070		2	12 000	5	476 000	
1995	4	774 500		0	0	1	11 500	
1996	0	0		1	26 215	0	0	
1997	5	2 320 000		0	0	5	2 320 000	
1998	7	10 080 000		0	0	3	5 800 000	
1999	0	0		0	0	0	0	
2000	9	11 748 500		0	0	1	0	

¹ Local Government (Planning and Development) Act, 1990 only.

Table 37: Serving of Notices under S29 of the 1963 Planning Act (obligation to purchase land)

Year	Number of notices	Decisions to comply		Cost £
		Planning Authority	An Bord Pleanála	
1992	1	1	1	500 000
1993	3	2	0	16 000
1994	4	0	1	N/A
1995	5	1	1	N/A
1996	4	0	0	N/A
1997	2	1	0	N/A
1998	0	0	0	0
1999	5	0	0	N/A
2000	7	0	1	400 000

Tables 38, 39, 40, 41, 42, 43 and 44

Table 38 gives the number of agreements made under S38 of the 1963 Planning Act. These are formal agreements (covenants) between the planning authority and the landowner. The use of this provision varies widely between planning authorities.

Table 39 shows the number of Tree Preservation Orders made and in force by the end of the year by area and for the period 1992 to 1996. Figures for Tree Preservation Orders continue to be unreliable. Where discrepancies cannot be otherwise resolved, figures from previous year are used. In 2000 three preservation orders appear to have been made and none were revoked.

The use of S4 of the 1982 Act, which allows an extension of the five-year validity period of a permission where development is under construction, is recorded in Table 40.

Table 42 records the levels of use of various sections of the Planning Acts.

Table 38: Agreements under S38 of the 1963 Planning Act by Area

	1995	1996	1997	1998	1999	2000
Carlow	4	4	10	35	22	46
Cavan	0	0	0	0	0	0
Clare	20	33	28	27	57	0
Cork	0	196	160	143	304	651
Donegal	7	6	8	22	26	7
Dun Laoghaire/Rathdown	0	1	3	7	0	3
Fingal	21	9	12	0	0	0
Galway	89	170	150	0	0	0
Kerry	3	5	2	0	18	16
Kildare	122	112	115	121	81	44
Kilkenny	2	6	6	0	0	20
Laois	5	7	7	19	37	59
Leitrim	0	0	0	0	0	0
Limerick	3	9	14	8	3	1
Longford	0	0	0	0	0	0
Louth	8	8	0	0	19	2
Mayo	0	0	0	0	0	15
Meath	31	21	30	23	19	8
Monaghan	2	1	1	2	15	10
Offaly	15	7	5	3	2	1
Roscommon	6	12	8	3	4	0
Sligo	0	1	2	13	24	19
South Dublin	0	0	0	0	0	1
Tipperary NR	0	1	5	1	1	0
Tipperary SR	0	0	3	2	6	12
Waterford	0	1	3	4	7	5
Westmeath	20	11	15	19	15	5
Wexford	0	0	1	0	7	3
Wicklow	50	48	67	87	76	54
Sub-total	400	668	655	539	743	982
Cork	0	0	1	0	0	1
Dublin	0	0	0	0	0	0
Galway	0	0	0	0	0	0
Limerick	0	0	0	0	0	0
Waterford	0	0	0	0	0	1
Sub-total	0	0	1	0	0	2
Total	400	668	656	539	743	984

Table 39: Tree Preservation Orders by Area

	Number of orders made					No. of orders in force at end of 2000
	1992	1993	1994	1995	1996	
Carlow	0	0	0	1	0	3
Cavan	0	0	0	0	0	0
Clare	0	0	1	0	0	1
Cork	0	0	0	0	0	8
Donegal	0	0	0	0	0	3
Dun Laoghaire/Rathdown	N/A	N/A	0	0	0	8
Fingal	N/A	N/A	0	0	0	3
Galway	0	0	0	0	0	1
Kerry	0	0	0	0	0	0
Kildare	1	0	0	0	0	4
Kilkenny	0	1	0	0	0	5
Laois	0	0	0	0	0	0
Leitrim	0	0	0	0	0	2
Limerick	0	0	0	0	0	2
Longford	0	0	0	0	0	0
Louth	0	1	0	1	0	4
Mayo	1	1	0	1	0	9
Meath	0	0	0	1	0	6
Monaghan	0	0	0	0	0	1
Offaly	0	0	0	0	0	14
Roscommon	0	0	0	0	0	3
Sligo	0	0	0	0	0	1
South Dublin	N/A	N/A	0	0	0	3
Tipperary NR	0	1	0	0	0	3
Tipperary SR	0	0	0	2	0	6
Waterford	0	1	0	0	0	24
Westmeath	0	0	0	0	0	17
Wexford	0	0	0	0	0	1
Wicklow	0	0	2	0	0	49
Sub-total	3	5	3	6	0	181
Cork Co.Bor.	0	0	0	0	0	11
Dublin Co.Bor.	0	0	1	0	0	2
Galway Co.Bor.	0	0	0	0	0	0
Limerick Co.Bor.	0	0	0	0	0	3
Waterford Co.Bor.	0	0	0	0	0	2
Sub-total	0	0	1	0	0	18
Total	3	5	4	6	0	199

Table 40: Extension of Duration of Permission for Substantially Completed Development (S4 1982 Act)

Year	Applied	Extensions Granted	Refused
1992	92	67	20
1993	96	74	16
1994	124	98	12
1995	142	112	19
1996	152	113	28
1997	134	106	20
1998	112	79	20
1999	80	60	10
2000	138	117	45

Table 41: S89 Licence Applications

Area	Applications	Granted	Refused
Carlow	0	0	0
Cavan	27	27	0
Clare	18	7	0
Cork	106	84	9
Donegal	8	7	0
Dun Laoghaire/Rathdown	0	0	0
Fingal	0	0	0
Galway	25	4	3
Kerry	13	0	0
Kildare	18	15	0
Kilkenny	60	57	3
Laois	19	15	0
Leitrim	8	7	1
Limerick	12	6	2
Longford	0	0	0
Louth	56	51	11
Mayo	33	31	2
Meath	18	9	0
Monaghan	4	4	0
Offaly	0	0	0
Roscommon	0	0	0
Sligo	0	0	0
South Dublin	54	35	0
Tipperary NR	32	23	9
Tipperary SR	86	86	0
Waterford	200	197	3
Westmeath	19	13	6
Wexford	10	10	0
Wicklow	32	23	5
Sub-total	858	711	54
Cork	13	10	3
Dublin	0	0	0
Galway	10	0	0
Limerick	58	58	0
Waterford	18	9	8
Sub-total	99	77	11
Total	957	788	65

Table 42: Use of Miscellaneous Sections of the 1963 Planning Act

Section ¹	1995	1996	1997	1998	1999	2000
S30 1963 Act	0	0	10	0	3	0
S44 1963 Act	0	0	0	0	0	33
S47 1963 Act	1	0	0	0	-	1
S48 1963 Act	1	0	0	0	-	0
S54 1963 Act	0	0	0	1	-	0
S76 1963 Act	16	5	6	0	-	8
S85 1963 Act	45	67	44	36	30	26

Note 1: The titles of these sections are listed in Appendix B

Table 43:

Under S19 of the 1963 Planning Act each planning authority must make a development plan for its area and this plan must be reviewed at least once in every five years. In Table 43, the year in which the most recent development plan was adopted is given for each planning authority. This table takes account of the situation up to the end of 2000, and draft plans have not been included.

Table 43: Development Plans by Planning Authority¹

Planning	Date Adopted	Date Review Due
<i>County Councils</i>		
Carlow	15/12/97	14/12/01
Cavan	16/06/96	31/12/01
Clare	13/12/99	12/12/03
Cork	30/06/96	31/12/01
Donegal & Rosnowlagh	31/07/00	30/07/04
- Ballyshannon	26/05/97	25/05/01
- Ballybofey	26/02/96	31/12/01
- Carndonagh	08/07/97	07/07/01
- Donegal town	29/11/99	28/11/03
- Killybegs	29/11/93	31/12/01
- Moville	28/02/94	31/12/01
Dun Laoghaire-Rathdown	13/07/98	12/07/02
Fingal	19/10/99	18/10/03
Galway	27/05/97	26/05/01
Kerry	20/12/96	31/12/01
Kildare	29/04/99	29/04/03
Kilkenny	18/07/94	31/12/01
Laois	29/04/00	28/04/04
Leitrim	14/04/97	13/04/01
Limerick	28/05/99	27/05/03
Longford	16/06/97	15/06/01
Louth	15/12/97	14/12/01
Mayo	17/02/92	13/12/01
Meath	05/03/01	04/03/05
Monaghan	26/05/99	25/05/03
Offaly	09/09/96	31/12/01
Roscommon	17/05/93	31/12/01
Sligo	23/12/99	22/12/03
South Dublin	15/12/98	14/12/02
Tipperary (NR)	15/12/98	14/12/02
Tipperary (SR)	04/11/96	31/12/01
- Cahir	07/02/94	31/12/01
- Fethard	07/03/94	31/12/01
Waterford	13/07/99	12/07/03
Westmeath	27/02/94	31/12/01
- Moate	28/02/94	31/12/01
- Mullingar	28/02/94	31/12/01
Wexford	11/06/1	10/06/05
Wicklow	08/03/99	07/03/03

Table 43: Development Plans by Planning Authority¹ (contd.)

Planning	Date Adopted	Date Review Due
<i>County Borough Corporations</i>		
Cork	23/03/98	22/03/02
Dublin	22/03/99	21/03/03
Galway	29/03/99	28/03/03
Limerick	31/12/98	30/12/02
Waterford	12/09/94	31/12/01
<i>Borough Corporations</i>		
Clonmel	06/09/93	31/12/01
Drogheda	20/05/99	19/05/03
Kilkenny	27/07/94	31/12/01
Sligo	30/06/92	31/12/01
Wexford	11/01/93	31/12/01
Galway Development Plan for Scheduled Towns of		
Athenry	27/04/92	31/12/01
Clifden	27/04/92	31/12/01
Gort	31/11/92	31/12/01
Loughrea	19/07/93	31/12/01
Tuam	22/05/00	21/05/04
<i>Urban District Councils</i>		
Arklow	12/05/99	11/05/03
Athlone	03/09/90	31/12/01
Athy	10/04/00	09/04/04
Ballina	15/12/92	31/12/01
Ballinasloe	13/06/95	31/12/01
Birr	12/10/98	11/10/02
Bray	01/06/99	30/06/03
Buncrana	10/03/93	31/12/01
Bundoran	20/01/98	19/01/02
Carlow	22/09/98	21/09/02
Carrickmacross	23/07/93	31/12/01
Carrick-on-Suir	14/11/94	31/12/01
Cashel	06/06/95	31/12/01
Castlebar	31/01/91	31/12/01
Castleblayney	24/07/01	23/07/05
Cavan	09/09/96	31/12/01
Clonakilty	06/01/98	05/01/02
Clones	28/05/01	27/05/05
Cobh	27/03/00	26/03/04
Dundalk	09/07/96	31/12/01
Dungarvan	29/09/94	31/12/01
Ennis	02/11/92	31/12/01
Enniscorthy	15/10/01	14/10/05
Fermoy	08/04/98	07/04/02
Kells	09/05/94	31/12/01
Killarney	25/06/95	31/12/01
Kilrush	10/02/94	31/12/01
Kinsale	05/01/98	04/01/02

Table 43: Development Plans by Planning Authority¹ (contd.)

Planning	Date Adopted	Date Review Due
Letterkenny	28/06/93	31/12/01
Listowel	19/03/98	18/03/02
Longford	16/12/97	15/12/01
Macroom	17/12/96	31/12/01
Mallow	18/05/98	17/05/02
Midleton	10/03/98	09/03/02
Monaghan	29/05/01	28/05/05
Naas	29/05/99	29/05/03
Navan	01/10/96	31/12/01
Nenagh	22/01/01	21/01/05
New Ross	15/12/98	14/12/02
Skibbereen	05/11/98	04/11/02
Templemore	11/11/92	31/12/01
Thurles	03/04/93	31/12/01
Tipperary	22/10/01	21/10/05
Tralee	16/12/96	31/12/01
Trim	12/06/98	11/06/02
Tullamore	29/04/98	28/04/02
Westport	04/03/92	31/12/01
Wicklow	07/04/97	06/04/01
Youghal	09/06/97	08/06/01

Appendix A

- Planning Fee Classes of Development

1. Dwellings
2. Domestic extensions etc.
3. Agricultural buildings and structures
4. Buildings or structures for keeping horses, ponies or greyhounds
5. Other buildings (other than 1, 2, 3, 4 - e.g. commercial)
6. Intensive agriculture, afforestation, peat extraction
7. Use of land for mining, quarrying etc, or for dumping
8. Use of land for caravanning etc, parking of vehicles or open storage
9. Provision of plant and machinery, or of storage tank or structures
10. Petrol filling stations
11. Advertisements
12. Electricity lines or overhead telecommunications lines
13. Use of land as a golf course or as a pitch and putt course
14. Use of land as a burial ground
15. Development not coming within any of the foregoing classes

Appendix B

- Miscellaneous Sections of the 1963 Planning Act

-
- S30 Revocation and modification of permission
 - S44 Requiring removal or alteration of hedge
 - S47 Creation of public rights of way pursuant to agreement
 - S48 Compulsory powers for creation of public rights of way
 - S54 Repair and tidying of advertisement structures and advertisements
 - S76 Extinguishment of public rights of way
 - S85 Placing of cables, wires and pipelines by planning authority
 - S89 Applications for various licences

Appendix C:

Enactments and Regulations relating to Physical Planning (to end 2000)

Planning and Development Acts

Local Government (Planning and Development) Act, 1963 (No. 28 of 1963)

Local Government (Planning and Development) Act, 1976 (No. 20 of 1976)

Local Government (Planning and Development) Act, 1982 (No. 21 of 1982)

Local Government (Planning and Development) Act, 1983 (No. 28 of 1983)

Local Government (Planning and Development) Act, 1990 (No. 11 of 1990)

Local Government Act, 1991 (Sections 44 and 45) (No. 11 of 1991)

Local Government (Planning and Development) Act, 1992 (No. 14 of 1992)

Local Government (Planning and Development) Act, 1993 (No. 12 of 1993)

Local Government (Planning and Development) Act, 1998 (No. 9 of 1998)

Local Government (Planning and Development) Act, 1999 (No. 17 of 1999)

Local Government (Planning and Development) Act, 2000 (No. 30 of 2000)

Planning and Development Regulations

European Communities (Environmental Impact Assessment) Regulations, 1989 (S.I. No. 349 of 1989)

European Communities (Environmental Impact Assessment) (Amendment) Regulations, 1994. (S.I. 84 of 1994)

Local Government (Planning and Development) Regulations, 1994 (S.I. No. 86 of 1994)

Local Government (Planning and Development) Regulations, 1995 (S.I. No. 69 of 1995)

Local Government (Planning and Development) Regulations, 1995 (S.I. No. 75 of 1995)

Local Government (Planning and Development) Regulations, 1996 (S.I. No. 100 of 1996)

Local Government (Planning and Development) Regulations, 1996 (S.I. No. 101 of 1996)

Local Government (Planning and Development) Regulations, 1997 (S.I. No. 78 of 1997)

Local Government (Planning and Development) Regulations, (No.2) 1997 (S.I. No. 121 of 1997)

Local Government (Planning and Development) (No.3) Regulations, 1997 (S.I. No. 261 of 1997)

Local Government (Planning and Development) (Fees) (Amendment) Regulations 1998 (S.I. No. 119 of 1998)

Local Government (Planning and Development) Regulations, 1998 (S.I. No. 124 of 1998)

Local Government (Planning and Development) (fees) (Amendment) (No. 2) Regulations, 1998 (S.I. No. 128 of 1998)

Local Government (Planning and Development) (No. 2) Regulations, 1998 (S.I. No. 194 of 1998)

Local Government (Planning and Development) Regulations, 1999 (S.I. No. 92 of 1999)

European Communities (Environmental Impact Assessment) (Amendment) Regulations, 1999. (S.I. No. 93 of 1999)

Local Government (Planning and Development) (No.2) Regulations, 1999. (S.I. No. 431 of 1999)

Local Government (Planning and Development) Regulations, 2000 (S.I. No. 181 of 2000)

Planning and Development Act, 2000 (Commencement) Order, 2000 (S.I. No. 349 of 2000)

Local Government (Planning and Development) Regulations, 2000 (S.I. No. 350 of 2000)

Planning and Development Act, 2000 (Commencement) (No. 2) Order, 2000 (S.I. No. 449 of 2000)

European Communities (Environmental Impact Assessment) (Amendment) Regulations, 2000 (S.I. No. 450 of 2000)

Local Government (Planning and Development) (No. 2) Regulations, 2000 (S.I. No. 457 of 2000)

Local Government (Planning and Development) (No. 2) Regulations, 2000 (S.I. No. 458 of 2000)

Planning and Development General Policy Directives

Local Government (Planning and Development) General Policy Directive, 1982 (S.I. No. 264 of 1982)

Local Government (Planning and Development) General Policy Directive, 1998 (S.I. No. 193 of 1998)

Appendix D: Other Publications

Other publications dealing with planning statistics include:

- Planning Statistics (Quarterly), Department of the Environment
- Statistical Release - Planning Permissions (Quarterly), Central Statistics Office
- Environment Bulletin (Quarterly), Department of the Environment
- An Bord Pleanála Annual Report