

Introduction

The publication series Planning Statistics was established in 1986. Its main objective is to monitor the implementation of the Local Government (Planning and Development) Acts 1963 - 1998. Most of the statistics relate to development control procedures (planning applications, appeals, fees, enforcement, etc.) and provide an up-to-date picture of the current situation as well as the trends emerging in relation to the operation of the physical planning system as a whole.

The current edition takes 1993 as its starting point and refers the reader to earlier editions for information prior to that date. Table 1, which gives overall trends from 1977 to date, has been retained.

The Planning Statistics Quarterly has been available since the beginning of 1990. It provides a breakdown of basic information on planning applications, decisions, refusals and deferrals by individual authority. Since 1990, information (in particular, Tables 2 and 3) is presented in the Annual Statistics by Area, an Area being a county authority and all other authorities within that county but excluding County Borough Councils.

Most of the figures presented here are based on information submitted by planning authorities either quarterly or annually to the Department of the Environment. The accuracy of the figures is dependent on the accuracy of the data submitted by each planning authority. Where discrepancies were noted (for example, in comparing aggregated quarterly returns with annual returns) these were resolved, where possible, by further communication with the relevant authorities. Minor discrepancies, where they remain unresolved, have been noted in individual tables.

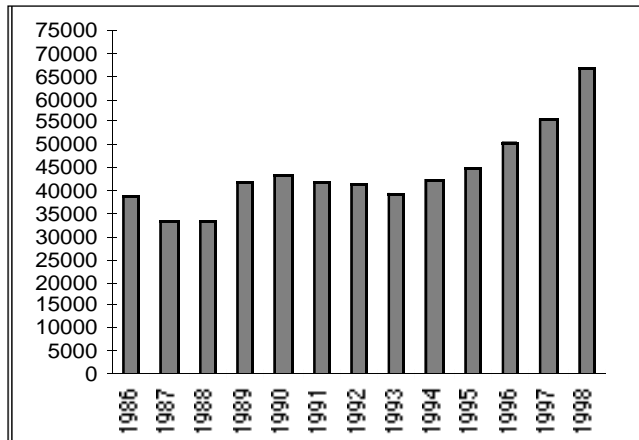
In calculating 'number of permissions', 'number of refusals', 'number of enforcement cases' and 'number of convictions' it should be borne in mind that the total number of refusals for one year could refer to applications from the previous year; similarly a period of more than one year could elapse between the initiation of an enforcement order and a possible conviction. In making comparisons between the 'deferral rate' for 1991 and subsequent years and years prior

to 1991, it should be noted that since 1990 the 'deferral rate' includes those cases deferred with the written consent of the applicant. In years prior to 1990 only cases arising from requests for additional information were taken into account.

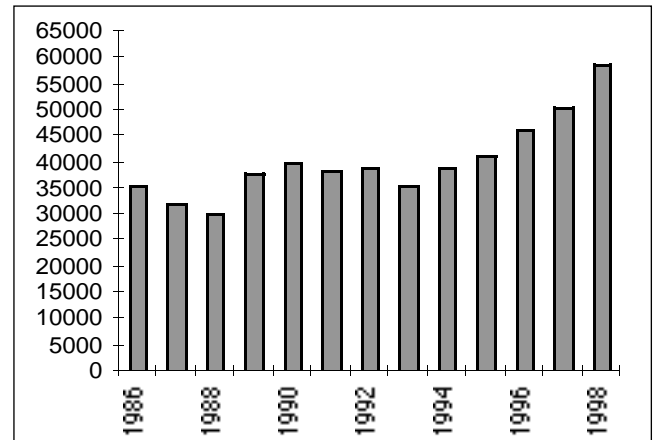
The tables have been grouped in four sections. The first two sections, 'Planning Applications' and 'Enforcement' deal with the development control system. The third section, 'Fees and Administration', covers the administrative aspects of the planning system, including staffing and resources, while the final section provides statistics on the use of various procedures in the Planning Acts.

A short section of text precedes each table or set of tables. Deficiencies in the statistics that may affect the validity or interpretation are pointed out in these paragraphs. In addition, some interpretation of the data is provided where relevant. However, the main purpose of this publication is to provide a set of basic planning statistics.

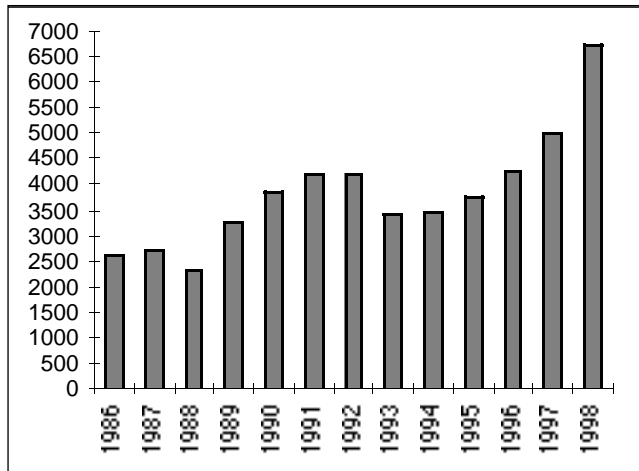
Figure 1: Planning Applications, Decisions, Refusals & Appeals



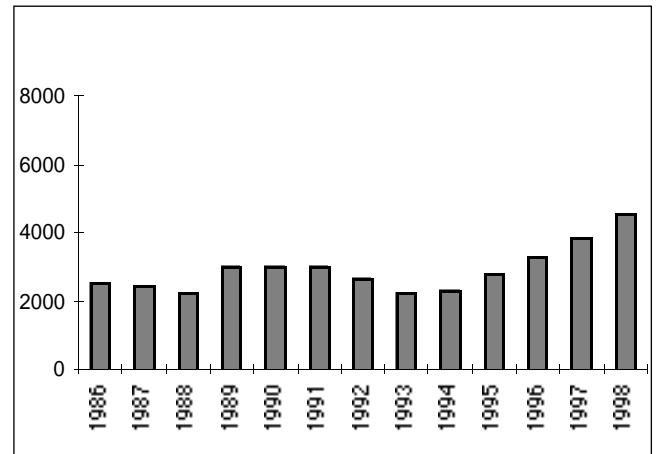
APPLICATIONS



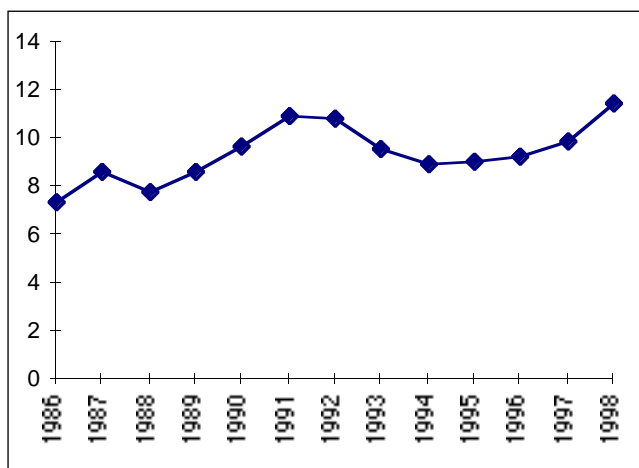
DECISIONS



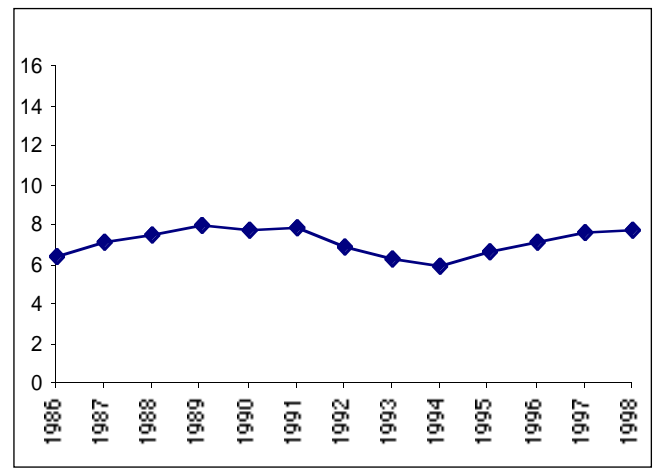
REFUSALS



APPEALS



REFUSAL RATE
(refusals as % of decisions)



APPEAL RATE
(appeals as % of decisions)

I Planning Applications

Tables 1, 2, 3 and 4

In the ten years since 1988 the number of planning applications made to local authorities has doubled. The rate of increase from one year to the next has not been matched since 1977-1978.

Between 1996 and 1997 there was an increase of ten percent in the number of applications for planning permission received by Local Authorities. This has been followed by a further increase of twenty percent for the current reporting year. The figures for 1998 are therefore the biggest on record.

Since 1982 permissions, for which development had not taken place within five years become invalid. This probably had the effect of reducing the number of 'speculative' (and perhaps not genuine) applications. There was a further structural change during 1983 when planning fees were introduced for the first time.

In the subsequent years up to 1993 the figures fluctuated between thirty three thousand and just over forty thousand. Since 1994 there has been a constant rise in the figures giving a cumulative increase of almost sixty percent.

Table 4 gives the number of refusals and the (so-called) 'refusal rates'. The percentage of planning decisions that consist of a refusal (the refusal rate) had shown a consistent decline from 15.1 per cent in 1981 to 7.4 per cent in 1986. Since then, apart from 1988, the rate has fluctuated between 8 and 11 per cent. The rate for 1997 was 9.9 per cent and this year's rate is 11.5 per cent.

The refusal rate is not an indicator of the proportion of applications that end up as refusals, nor should it be regarded as an indicator of the 'efficiency' or 'commitment' of any individual planning authority. Higher refusal rates might be expected, for example, in areas of high amenity value or in areas under intensive pressures for speculative development.

Some of the above trends are graphically presented in Figure 1.

Table 1: Planning Applications, Decisions and Refusals

Year	Planning applications	Planning decisions	Refusals	Refusal rate ¹
1977	44 691	40 873	4 673	11.4
1978	54 223	46 655	5 636	12.1
1979	57 060	55 062	6 872	12.5
1980	50 138	47 207	6 162	13.1
1981	53 890	48 367	7 318	15.1
1982	48 855	48 234	7 242	15.0
1983	39 569	37 290	4 890	13.1
1984	33 018	31 145	3 117	10.0
1985	33 649	31 264	2 992	9.6
1986	38 971	35 447	2 624	7.4
1987	33 472	31 988	2 742	8.6
1988	33 564	30 305	2 350	7.8
1989	41 924	38 018	3 293	8.6
1990	43 378	39 698	3 866	9.7
1991	41 996	38 450	4 234	11.0
1992	41 711	38 785	4 197	10.8
1993	39 486	35 539	3 428	9.6
1994	42 318	38 849	3 456	8.9
1995	45 261	41 282	3 773	9.1
1996	50 732	46 015	4 278	9.3
1997	55 929	50 427	5 008	9.9
1998	67 075	58 634	6 730	11.5

Note 1: Number of decisions to refuse permission as a percentage of the total number of decisions

Table 2: Planning Applications by area

Area	1993	1994	1995	1996	1997	1998	(%) Change '97 to '98
Carlow	397	528	559	623	637	810	27.2
Cavan	657	814	823	903	991	1293	30.5
Clare	1 376	1 438	1 483	1 831	1 957	2342	19.7
Cork	4 002	4 375	4 828	5 227	5 572	6227	11.8
Donegal	1 868	2140	2 222	2 520	2 831	3652	29.0
Dun Laoghaire/Rathdown	N/A	1 477	1 375	1 683	1 851	2176	17.4
Fingal	N/A	1 355	1 376	1 633	1 815	2088	15.0
Galway	2 223	2 440	2 615	3 160	3 833	4886	27.5
Kerry	2 259	2 309	2 478	2 811	3 095	3638	17.5
Kildare	1 358	1 588	1 589	1 882	2 060	2574	25.0
Kilkenny	1 002	1 098	1 205	1 277	1 355	1531	13.0
Laois	646	696	730	814	812	1153	42.0
Leitrim	420	394	402	427	575	729	26.8
Limerick	1 328	1 401	1 524	1 794	1 899	2133	12.3
Longford	434	446	524	524	498	557	11.8
Louth	1 146	1 237	1 406	1543	1 592	1897	19.2
Mayo	1 653	1 688	1 981	2 409	2 679	3377	26.1
Meath	1 396	1 418	1 531	1 654	2 021	2442	20.8
Monaghan	656	846	877	925	1 040	1083	4.1
Offaly	707	740	779	864	979	1195	22.1
Roscommon	600	743	824	885	986	1258	27.6
Sligo	755	805	882	942	946	1172	23.9
South Dublin	N/A	991	1 118	1 249	1 198	1651	37.8
Tipperary NR	585	754	879	900	1 028	1216	18.3
Tipperary SR	877	991	1 028	1 070	1 146	1331	16.1
Waterford	656	806	845	898	1 053	1302	23.6
Westmeath	824	848	880	1 135	1 339	1532	14.4
Wexford	1 804	2 010	2 006	2 207	2 451	3146	28.4
Wicklow	1 351	1 480	1 479	1 541	1 864	2156	15.7
Sub-total	35 242	37 836	40 253	45 331	50 106	60547	20.8
Cork	678	725	803	796	891	982	10.2
Dublin	2 179	2 367	2 698	2 945	3 248	3782	16.4
Galway	716	674	761	851	855	912	6.7
Limerick	348	347	394	408	431	463	7.4
Waterford	323	369	352	401	401	389	(3.0)
Sub-total	4 244	4 482	5 008	5 401	5 826	6528	12.0
Total	39 486	42 318	45 261	50 732	55 929	67075	19.9

Table 3: Planning Decisions by Area

Area	1993	1994	1995	1996	1997	1998	% Change '97 to '98
Carlow	390	421	524	578	591	680	15.1
Cavan	625	741	749	860	939	1224	30.4
Clare	1 196	1 267	1 275	1 516	1 658	1914	15.4
Cork	3 715	4 013	4 520	4 870	5 113	5391	5.4
Donegal	1 668	2 191	1 998	2 320	2 476	3238	30.8
Dun Laoghaire/Rathdown	N/A	1 432	1 330	1 544	1 777	2073	16.7
Fingal	N/A	1 250	1 303	1 486	1 673	2003	19.7
Galway	2 051	2 410	2 460	2 969	3 371	4471	32.6
Kerry	1 956	1 873	2 095	2 668	2 921	3298	12.9
Kildare	1 332	1 450	1 600	1 612	1 727	1917	11.0
Kilkenny	962	982	1 129	1 100	1 303	1336	2.5
Laois	559	649	642	725	759	991	30.6
Leitrim	342	361	385	451	492	577	17.3
Limerick	1 283	1 295	1 411	1 605	1 703	1859	9.2
Longford	379	409	481	443	482	476	(1.2)
Louth	1 056	1 096	1 245	1 310	1 425	1552	8.9
Mayo	1 531	1 655	1 698	2 010	2 247	2721	21.1
Meath	1 284	1 288	1 418	1 507	1 711	2168	26.7
Monaghan	594	766	759	833	936	914	(2.4)
Offaly	639	641	692	715	851	963	13.2
Roscommon	508	667	711	750	846	1047	23.8
Sligo	707	698	757	798	787	1003	27.4
South Dublin	N/A	935	1 065	1 160	1 409	1509	7.1
Tipperary NR	565	710	851	852	987	1160	17.5
Tipperary SR	769	904	935	1 008	1 053	1200	14.0
Waterford	573	684	759	834	978	1184	21.1
Westmeath	720	770	788	1 057	1 192	1354	13.6
Wexford	1 466	1 744	1 874	2 025	2 104	2798	33.0
Wicklow	1 203	1 335	1 349	1 382	1 586	1802	13.6
Sub-total	31 437	34 647	36 803	40 988	45 097	52823	17.1
Cork	623	683	744	781	808	911	12.7
Dublin	2 182	2 118	2 377	2 634	3 075	3429	11.5
Galway	648	708	666	844	658	698	6.1
Limerick	376	334	369	407	406	397	(2.2)
Waterford	273	359	323	361	383	376	(1.8)
Sub-total	4 840	4 102	4 202	5 027	5 330	5811	9.0
Total	35 539	38 849	41 282	46 015	50 427	58634	16.3

Table 4: Refusals and Refusal Rate by Area

Area	1993		1994		1995	
	Refusals	Rate	Refusals	Rate	Refusals	Rate
Carlow	12	3.1	14	3.3	13	2.5
Cavan	45	7.2	20	2.7	32	4.3
Clare	37	3.1	57	4.5	33	2.6
Cork	380	10.2	367	9.1	445	9.8
Donegal	197	11.8	137	6.3	97	4.9
Dun Laoghaire/Rathdown	N/A	N/A	161	11.2	169	12.7
Fingal	N/A	N/A	218	17.4	236	18.1
Galway	300	14.6	310	12.9	286	11.6
Kerry	117	6.0	68	3.6	95	4.5
Kidare	222	16.7	234	16.1	260	16.3
Kilkenny	60	6.2	60	6.1	75	6.6
Laois	26	4.7	11	1.7	38	5.9
Leitrim	9	2.6	11	3.0	8	2.1
Limerick	31	2.4	36	2.8	50	3.5
Longford	30	7.9	27	6.6	46	9.6
Louth	82	7.8	120	10.9	124	10
Mayo	38	2.5	40	2.4	53	3.1
Meath	239	18.6	173	13.4	170	12
Monaghan	43	7.2	59	7.7	51	6.7
Offaly	38	6.0	43	6.7	85	12.3
Roscommon	32	6.3	21	3.1	46	6.5
Sligo	90	12.7	73	10.5	79	10.4
South Dublin	N/A	N/A	90	9.6	105	9.9
Tipperary NR	31	5.5	33	4.6	38	4.5
Tipperary SR	30	3.9	33	3.7	37	4
Waterford	37	6.5	34	5.0	40	5.3
Westmeath	81	11.3	60	7.8	56	7.1
Wexford	146	10.0	241	13.8	209	11.2
Wicklow	170	14.1	215	16.1	197	14.6
Sub-total	2 935	9.3	2 966	8.6	3 173	8.6
Cork	34	5.5	76	11.1	81	10.9
Dublin	321	14.7	324	15.3	392	16.5
Galway	92	14.2	60	8.5	85	12.8
Limerick	31	8.2	18	5.4	27	7.3
Waterford	15	5.5	12	3.3	15	4.6
Sub-total	493	12.0	490	11.7	600	13.4
Total	3 428	9.6	3 456	8.9	3 773	9.1

Table 4: Refusals and Refusal Rate by Area (cont'd)

Area	1996		1997		1998		Rate Change from 1997 to 1998
	Refusals	Rate	Refusals	Rate	Refusals	Rate	
Carlow	15	2.6	24	4.1	40	5.9	1.8
Cavan	39	4.5	41	4.4	56	4.6	0.2
Clare	40	2.6	92	5.5	104	5.4	(0.1)
Cork	404	8.3	447	8.7	608	11.3	2.6
Donegal	98	4.2	153	6.2	353	10.9	4.7
Dun Laoghaire/Rathdown	214	13.9	196	11.0	261	12.6	1.6
Fingal	269	18.1	292	17.5	444	22.2	4.7
Galway	336	11.3	401	11.9	583	13.0	1.1
Kerry	160	6.0	225	7.7	259	7.9	0.2
Kildare	274	17.0	227	13.1	194	10.1	(3.0)
Kilkenny	96	8.7	146	11.2	190	14.2	3.0
Laois	48	6.6	59	7.8	104	10.5	2.7
Leitrim	17	3.8	30	6.1	44	7.6	1.5
Limerick	50	3.1	92	5.4	135	7.3	1.9
Longford	44	9.9	43	8.9	59	12.4	3.5
Louth	97	7.4	103	7.2	135	8.7	1.5
Mayo	83	4.1	132	5.9	152	5.6	(0.3)
Meath	219	14.5	322	18.8	555	25.6	6.8
Monaghan	103	12.4	98	10.5	92	10.1	(0.4)
Offaly	68	9.5	96	11.3	128	13.3	2.0
Roscommon	36	4.8	46	5.4	81	7.7	2.3
Sligo	63	7.9	56	7.1	84	8.4	1.3
South Dublin	140	12.1	217	15.4	246	16.3	0.9
Tipperary NR	35	4.1	62	6.3	117	10.1	3.8
Tipperary SR	32	3.2	42	4.0	53	4.4	0.4
Waterford	46	5.5	62	6.3	81	6.8	0.5
Westmeath	65	6.1	76	6.4	97	7.2	0.8
Wexford	255	12.6	228	10.8	341	12.2	1.4
Wicklow	228	16.5	273	17.2	328	18.2	1.0
Sub-total	3 574	8.7	4 281	9.5	5924	11.3	1.8
Cork	77	9.9	78	9.7	103	11.3	1.6
Dublin	414	15.7	461	15.0	522	15.2	0.2
Galway	143	16.9	124	18.8	100	14.3	(4.5)
Limerick	46	11.3	34	8.4	57	14.4	6.0
Waterford	24	6.6	30	7.8	24	6.4	(1.4)
Sub-total	704	14.0	727	13.6	806	13.9	0.3
Total	4 278	9.3	5 008	9.9	6730	11.5	1.6

Tables 5, 6, 7 and 8

In 1998, 4,548 planning decisions were the subject of an appeal to An Bord Pleanála - an increase of almost 18% over the previous year. The figure does not include reactivated appeals. A considerable number of appeals - approximately 22% of the total - were disposed of without a formal decision (withdrawn, invalid, etc.). In 1998 the number of formal decisions amounted to 3,154

Table 8 (which is obtained in full from the annual report of An Bord Pleanála) shows the breakdown of appeal decisions in three categories: reversed, varied and confirmed. Almost one in four appeals leads to a reversal of the local authority decision. This information is not available for individual authorities.

Table 5: Planning Decisions and Appeals¹

Year	Planning decisions	Appeals made	Appeal decisions	Appeals made as percentage of planning decisions
1988	30 305	2 257	1 955	7.5
1989	38 018	3 043	1 811	8.0
1990	39 698	3 038	2 732	7.7
1991	38 450	3 050	2 511	7.9
1992	38 785	2 671	2 473	6.9
1993	35 539	2 249	2 033	6.3
1994	38 849	2 331	1 802	6.0
1995	41 282	2 777	2 064	6.7
1996	46 015	3 319	2 540	7.2
1997	50 427	3 845	2 902	7.6
1998	58 634	4 533	3 154	7.7

Note 1: Source - An Bord Pleanála

Table 6: Planning Decisions and Appeals in 1998 by Area

Area	Planning Decisions	Appeals Made	Appeals made as % of Planning Decisions
Carlow	680	38	5.6
Cavan	1224	54	4.4
Clare	1914	105	5.5
Cork	5391	387	7.2
Donegal	3238	124	3.8
Dun Laoghaire/ Rathdown	2073	309	14.9
Fingal	2003	281	14.0
Galway	4471	224	5.0
Kerry	3298	179	5.4
Kildare	1917	144	7.5
Kilkenny	1336	79	5.9
Laois	991	50	5.0
Leitrim	577	31	5.4
Limerick	1859	96	5.2
Longford	476	34	7.1
Louth	1552	106	6.8
Mayo	2721	161	5.9
Meath	2168	156	7.2
Monaghan	914	44	4.8
Offaly	963	51	5.3
Roscommon	1047	53	5.1
Sligo	1003	42	4.2
South Dublin	1509	191	12.7
Tipperary NR	1160	81	7.0
Tipperary SR	1200	53	4.4
Waterford	1184	65	5.5
Westmeath	1354	71	5.2
Wexford	2798	116	4.1
Wicklow	1802	226	12.5
Sub-total	52823	3551	6.7
Cork	911	118	13.0
Dublin	3429	662	19.3
Galway	698	139	19.9
Limerick	397	31	7.8
Waterford	376	32	8.5
Sub-total	5811	982	16.9
Total	58634	4533	7.7

Table 7: Appeals Made by Area

Area	1993	1994	1995	1996	1997	1998
Carlow	12	20	16	13	29	38
Cavan	28	16	18	25	35	54
Clare	49	45	40	60	97	105
Cork	184	167	262	299	327	387
Donegal	40	53	61	81	91	124
Dun Laoghaire/Rathdown	-	184	184	236	264	309
Fingal	-	170	192	253	229	281
Galway	107	102	106	154	166	224
Kerry	72	76	92	148	193	179
Kildare	92	117	149	135	134	144
Kilkenny	33	35	45	66	79	79
Laois	21	13	20	29	34	50
Leitrim	6	13	10	12	19	31
Limerick	32	29	24	47	78	96
Longford	20	22	36	15	28	34
Louth	55	62	81	90	100	106
Mayo	66	50	71	94	135	161
Meath	91	63	74	102	117	156
Monaghan	29	42	45	43	39	44
Offaly	22	19	29	34	36	51
Roscommon	25	19	31	35	45	53
Sligo	26	23	40	41	38	42
South Dublin	-	108	131	140	154	191
Tipperary NR	32	31	38	38	51	81
Tipperary SR	14	21	27	35	43	53
Waterford	31	29	32	30	47	65
Westmeath	30	32	49	51	74	71
Wexford	45	75	57	89	89	116
Wicklow	117	135	145	161	192	226
Sub-total	1 688	1 771	2 105	2 556	2 973	3551
Cork	53	75	91	74	88	118
Dublin	375	378	452	526	612	662
Galway	83	80	80	110	106	139
Limerick	22	12	24	31	35	31
Waterford	28	15	25	22	31	32
Sub-total	561	560	672	763	872	982
Total	2 249	2 331	2 777	3 319	3 845	4533

Source: An Bord Pleanála

Table 8: Consistency of Planning Decisions in Appeal Cases

Year	Decision of Planning Authority		
	Reversed	Varied	Confirmed
1991	615 (24.5)	762 (30.3)	1 134 (45.2)
1992	598 (24.2)	676 (27.3)	1 199 (48.5)
1993	496 (24.4)	675 (33.2)	862 (42.4)
1994	418 (23.2)	652 (36.2)	732 (40.6)
1995	478 (23.2)	746 (36.1)	840 (40.7)
1996	582 (22.9)	915 (38.0)	1 043 (41.1)
1997	659 (22.9)	992 (34.5)	1 222 (42.5)
1998	664 (21.5)	1143 (37.1)	1276 (41.4)

Source: An Bord Pleanála

Tables 9, 10, 11 and 12

There was a steady annual increase in applications for outline permission from 1988 to 1992. There was a slight drop in numbers for 1993 and 1994. These applications continue to account for about one in ten of all applications. The ratio of applications for approval to those for outline permissions is approximately 1:4. This would appear to indicate that little use is made of the provision in the Planning Act which enables an applicant who has obtained an outline permission to make that permission operational by the granting of an approval. It therefore appears likely that most outlines are followed up by an application for permission (rather than approval) or that they are not followed up at all.

Table 12 shows that the 'refusal rate' for outline permissions - at approximately 26% - is more than twice the average rate. The refusal rate for approvals is approximately one tenth of the average rate.

Table 9: Planning Applications by Type of Application

Year	Type of Application			Total
	Outline Perm	Approval	Permission	
1991	4 486 (10.7)	773 (1.8)	36 737 (87.5)	41 996
1992	4 510 (10.8)	799 (1.9)	36 402 (87.3)	41 711
1993	4 048 (10.3)	822 (2.0)	34 616 (87.7)	39 486
1994	3 910 (9.2)	1 023 (2.4)	37 394 (88.4)	42 318
1995	4 225 (9.3)	1 052 (2.3)	39 984 (88.3)	45 261
1996	4 556 (9.0)	1 228 (2.4)	44 948 (88.6)	50 732
1997	5 877 (10.5)	1 431 (2.6)	48 261 (86.9)	55 929
1998	8 068 (12.0)	1 932 (2.9)	57 075 (85.1)	67 075

Table 10: Planning Applications by Area and by Type 1998

Area	Outline	%	Approval	%	Perm'sn	%	Total
Carlow	84	10.4	16	2.0	710	87.7	810
Cavan	200	15.5	35	2.7	1 058	81.8	1 293
Clare	402	17.2	85	3.6	1 855	79.2	2 342
Cork	797	12.8	122	2.0	5 308	85.2	6 227
Donegal	746	20.4	137	3.8	2 769	75.8	3 652
Dun Laoghaire/Rathdown	59	2.7	9	0.4	2 108	96.9	2 176
Fingal	62	3.0	16	0.8	2 010	96.3	2 088
Galway	989	20.2	274	5.6	3 623	74.2	4 886
Kerry	735	20.2	255	7.0	2 648	72.8	3 638
Kildare	102	4.0	17	0.7	2 455	95.4	2 574
Kilkenny	178	11.6	34	2.2	1 319	86.2	1 531
Laois	163	14.1	51	4.4	939	81.4	1 153
Leitrim	144	19.8	18	2.5	567	77.8	729
Limerick	275	12.9	52	2.4	1 806	84.7	2 133
Longford	74	13.3	12	2.2	471	84.6	557
Louth	261	13.8	119	6.3	1 517	80.0	1 897
Mayo	464	13.7	100	3.0	2 813	83.3	3 377
Meath	113	4.6	36	1.5	2 293	93.9	2 442
Monaghan	170	15.7	35	3.2	878	81.1	1 083
Offaly	202	16.9	40	3.3	953	79.7	1 195
Roscommon	185	14.7	76	6.0	997	79.3	1 258
Sligo	136	11.6	27	2.3	1 009	86.1	1 172
South Dublin	43	2.6	7	0.4	1 601	97.0	1 651
Tipperary NR	228	18.8	49	4.0	939	77.2	1 216
Tipperary SR	190	14.3	43	3.2	1 098	82.5	1 331
Waterford	179	13.7	46	3.5	1 077	82.7	1 302
Westmeath	252	16.4	76	5.0	1 204	78.6	1 532
Wexford	385	12.2	102	3.2	2 659	84.5	3 146
Wicklow	118	5.5	20	0.9	2 018	93.6	2 156
Sub-total	7 936	13.1	1 909	3.2	50 702	83.7	60 547
Cork	31	3.2	6	0.6	945	96.2	982
Dublin	52	1.4	3	0.1	3 727	98.5	3 782
Galway	28	3.1	13	1.4	871	95.5	912
Limerick	4	0.9	0	0.0	459	99.1	463
Waterford	17	4.4	1	0.3	371	95.4	389
Subtotal	132	2.0	23	0.4	6 373	97.6	6 528
Total	8 068	12.0	1 932	2.9	57 075	85.1	67 075

Table 11: Planning Decisions by Type of Application

Year	Outline		Type of Application		Permission		Total
	Permission		Approval				
1991	3 842	(10.0)	664	(1.7)	33 942	(88.3)	38 448
1992	3 697	(9.5)	742	(1.9)	34 346	(88.6)	38 785
1993	3 299	(9.3)	681	(1.9)	31 559	(88.8)	35 539
1994	3 325	(8.6)	895	(2.3)	34 629	(89.1)	38 849
1995	3 539	(8.6)	942	(2.3)	36 801	(89.1)	41 282
1996	3 876	(8.4)	1 085	(2.4)	41 058	(89.2)	46 015
1997	4 741	(9.4)	1 295	(2.6)	44 390	(88.0)	50 426
1998	6 337	(10.8)	1691	(2.9)	50606	(86.3)	58 634

Table 12: Refusals as a Percentage of Decisions by Type of Application

Year	Outline		Type of Application		Permission	All Types
	Permission		Approval			
1991	29.6		2.7		9.1	11.0
1992	30.9		2.3		8.8	10.8
1993	27.7		2.2		7.9	9.6
1994	23.4		2.9		7.5	8.9
1995	24.3		2.3		7.9	9.1
1996	24.0		2.7		8.1	9.3
1997	24.9		2.6		8.5	9.9
1998	26.2		1.1		13.3	11.5

Tables 13, 14 and 15

A decision on a planning application must be made by the planning authority within a period of two months. This period can be extended in two ways.

The first occurs when a planning authority requests additional information (S26 of the 1963 Act, Art. 33 of the 1994 Regulations). A second procedure, requiring the written consent of the applicant, allows the planning authority to extend the two-month period. This provision was introduced in the 1976 Act (Table 15).

Table 14 gives the total figures for both procedures. Table 15 gives the figures for the extension provision introduced in the 1976 Act.

In 1989 and in previous years deferred applications referred only to those arising from 'request for further information'. From 1990 onwards 'deferrals' also include cases dealt with under this second procedure. It should be noted that greater use is being made of this procedure every year. There was an increase of more than forty per cent between 1996 and 1997 and an increase of 136% from 1997 to 1998. Double counting is excluded.

Deferrals arising from the 1976 Act are increasing as a percentage of total deferrals: 1996: 14%; 1997:20%; 1998:24%.

Table 13: Applications Deferred by Type of Application

Year	Type of Application ¹						Total
	Outline Permission		Approval		Permission		
1991	1 786	(14.4)	155	(1.3)	10 444	(84.3)	12 798
1992	1 890	(15.2)	169	(1.4)	10 399	(83.5)	12 458
1993	1 651	(15.7)	218	(2.1)	8 651	(82.2)	10 520
1994	1 536	(13.6)	266	(2.4)	9 471	(84.0)	11 273
1995	1 628	(13.2)	239	(1.9)	10 432	(84.8)	12 299
1996	1 972	(13.3)	307	(2.1)	12 559	(84.6)	14 838
1997	2 438	(14.7)	351	(2.1)	13 816	(83.2)	16 605
1998	3 193	(15.4)	447	(2.2)	17 061	(82.4)	20 701

Note 1: *The figures for the categories outline permission, approval and permission for 1991 underestimated the real figures and did not add up to the total number of deferred applications because of data missing for certain planning authorities.*

Table 14: Applications Deferred as Percentage of Applications ¹

Area	Deferred total 1997	Deferral rate	Deferred total 1998	Deferral rate	Change in rate '97 to '98
Carlow	159	25.0	286	35.3	10.3
Cavan	297	30.0	371	28.7	(1.3)
Clare	999	51.0	1 187	50.7	(0.3)
Cork	1 790	32.1	2 092	33.6	1.5
Donegal	798	28.2	1 105	30.3	2.1
Dun Laoghaire/Rathdown	309	16.7	377	17.3	0.6
Fingal	486	26.8	732	35.1	8.3
Galway	1 159	30.2	1 328	27.2	(3.0)
Kerry	657	21.2	956	26.3	5.1
Kildare	1 014	49.2	1 346	52.3	3.1
Kilkenny	353	26.1	466	30.4	4.3
Laois	312	38.4	460	39.9	1.5
Leitrim	112	19.5	183	25.1	5.6
Limerick	668	35.2	748	35.1	(0.1)
Longford	163	32.7	146	26.2	(6.5)
Louth	378	23.7	486	25.6	1.9
Mayo	588	21.9	881	26.1	4.2
Meath	614	30.4	683	28.0	(2.4)
Monaghan	231	22.2	315	29.1	6.9
Offaly	435	44.4	542	45.4	1.0
Roscommon	288	29.2	376	29.1	(0.1)
Sligo	415	43.9	502	42.8	(1.1)
South Dublin	188	15.7	169	10.2	(5.5)
Tipperary NR	241	23.4	289	23.8	0.4
Tipperary SR	118	10.3	164	12.3	2.0
Waterford	296	28.1	358	27.5	(0.6)
Westmeath	419	31.3	535	34.9	3.6
Wexford	970	39.6	1 123	35.7	(3.9)
Wicklow	647	34.7	705	32.7	(2.0)
Sub-total	15 104	30.1	18 911	31.2	1.1
Cork	278	31.2	163	16.6	(14.6)
Dublin	614	18.9	1 062	28.1	9.2
Galway	521	60.9	455	49.9	(11.0)
Limerick	40	9.3	59	12.7	3.4
Waterford	48	12.0	51	13.1	1.1
Sub-total	1 501	25.8	1 790	27.4	1.6
Total	16 605	29.7	20 701	30.9	1.2

Note 1: See text in introduction to table. This table should be read in conjunction with the following Table 15. The data in Table 15 are incorporated in the figures in this table.

Table 15: Applications where Consideration Time has been Extended (S26(4A) of 1963 Act as amended)

Area	1993	1994	1995	1996	1997	1998
Carlow	3	2	1	3	2	4
Cavan	15	22	7	6	6	5
Clare	34	91	17	148	115	134
Cork	257	250	327	428	489	417
Donegal	7	12	58	109	110	173
Dun Laoghaire/Rathdown	N/A	38	40	32	54	49
Fingal	N/A	147	95	103	333	132
Galway	104	147	164	142	255	339
Kerry	44	36	73	75	467	74
Kildare	27	43	49	54	227	541
Kilkenny	34	44	52	84	80	87
Laois	11	29	25	11	24	11
Leitrim	0	1	1	0	2	4
Limerick	32	42	52	54	32	74
Longford	7	10	23	2	12	14
Louth	52	41	40	62	89	145
Mayo	202	51	72	68	98	248
Meath	16	9	24	42	41	100
Monaghan	1	27	7	8	9	8
Offaly	5	2	4	9	7	32
Roscommon	8	7	3	8	18	56
Sligo	23	17	19	39	30	134
South Dublin	N/A	N/A	18	15	11	193
Tipperary NR	18	22	29	27	33	60
Tipperary SR	29	12	8	18	11	20
Waterford	6	4	2	7	17	14
Westmeath	22	24	10	12	127	430
Wexford	17	7	5	15	21	75
Wicklow	37	48	18	222	81	217
Sub-total	1 192	995	1 186	1 615	1854	4390
Cork	77	78	N/A	51	113	63
Dublin	206	272	158	173	121	528
Galway	11	21	7	11	19	36
Limerick	4	1	0	10	12	11
Waterford	17	15	19	26	9	8
Sub-total	315	387	184	271	274	646
Total	1 507	1 382	1 370	1 886	2128	5 036

Tables 16 and 17

Tables 16 and 17 give information on the use of procedures through which elected representatives can influence the planning control process: S4 of the City and County Management (Amendment) Act, 1955, and the procedure of material contravention of the development plan, as provided for in the 1976 Act.

While only limited use is made of these procedures overall, some authorities do use them to a considerable extent. The S4 procedure was used in 8 authorities. One county authority accounts for almost half of the total usage.

By virtue of section 26(3)(c) of the 1963 Act, a section 4 motion which, if passed, would result in a material contravention of the development plan, lapses and the material contravention procedures come into operation. Accordingly, those section 4 motions which have been superseded by the material contravention procedures are now listed separately. They then appear on the Council agenda as material contraventions.

Sections 44 and 45 of the Local Government Act, 1991 introduced changes in both procedures from 7 June 1991. In both cases a decision to grant planning permission requires the vote of not less than three quarters of the members of the Council in favour. The reduction of approximately 42 per cent in 'S4 Motions' in 1992 as compared to 1991 did not continue into 1993 and there was little change in the numbers of 'S4 Motions' in 1994. 1995's figures for 'S4 Motions' showed an unprecedented reduction of 58.5 per cent, and this figures did not change substantially in 1996. There has however been a further reduction of twenty four per cent in 1997 and an increase this year of 14 per cent equivalent to 4 instances. However, the number of 'Material Contraventions' has not shown the same decrease in this period.

Table 16 Applications where either S4 Procedure or the Procedure for Material Contravention of the Development Plan was followed

Procedure	1993	1994	1995	1996	1997	1998
- S4 Procedure						
• On Agenda	98	94	39	37	28	32
• Passed by Council	52	63	12	9	3	8
• Superseded by Material Contravention	31	34	16	18	18	20
- Material Contravention						
• Notice of Intention	91	109	84	95	106	142
• Passed by Council	81	92	74	82	88	122

Table 17: Applications where either S4 or Material Contravention Procedures were used

Area	SECTION 4 MOTIONS			MATERIAL CONTRAVENTIONS	
	Agenda	Passed	Superseded by Material Contravention	Agenda	Passed
Carlow	5	2	3	4	4
Cavan	0	0	0	0	0
Clare	0	0	0	3	3
Cork	1	0	1	8	5
Donegal	14	4	5	10	7
Dun Laoghaire/Rathdown	0	0	0	1	0
Fingal	0	0	0	0	0
Galway	0	0	0	18	15
Kerry	2	0	1	6	5
Kildare	0	0	0	7	7
Kilkenny	0	0	0	0	0
Laois	0	0	0	1	1
Leitrim	0	0	0	0	0
Limerick	0	0	0	0	0
Longford	0	0	0	0	0
Louth	1	0	1	8	7
Mayo	0	0	2	2	0
Meath	2	0	0	1	1
Monaghan	0	0	0	0	0
Offaly	0	0	0	4	4
Roscommon	0	0	0	1	1
Sligo	0	0	0	2	1
South Dublin	0	0	0	4	3
Tipperary Nr	0	0	0	0	0
Tipperary Sr	0	0	0	8	8
Waterford	0	0	0	4	2
Westmeath	0	0	0	17	17
Wexford	7	0	7	9	9
Wicklow	0	2	0	11	10
Subtotal	32	8	20	129	110
Cork	0	0	0	0	0
Dublin	0	0	0	2	2
Galway	0	0	0	3	2
Limerick	0	0	0	0	0
Waterford	0	0	0	8	8
Subtotal	0	0	0	13	12
Total	32	8	20	142	122

Tables 18, 18A and 19

Table 18 provides information on the type of development applied for in planning applications. It is derived from the information on planning fees and the land use categories that are defined in the Local Government (Planning & Development) Regulations, 1994. The 1994 Regulations give a slightly different fee class arrangement and there are some new classes not provided for in the 1984 Regulations. Table 18A, covering the years 1992 to 1994 is retained for comparison purposes.

Tables 18 and 19 provide data on the number of applications in each fee class. Small discrepancies may occur between the total number of applications in these tables and the actual number presented in Table 2. This can be for a number of reasons: certain applications are exempted from fees - there were 823, other applications falling into different fee classes may have been counted more than once, and applications received in the earlier part of the year may have been withdrawn by year end.

In 1998 almost eight out of every ten applications were for residential development (class 1 and class 2 - dwelling houses and 'extensions').

Table 18: Planning Applications by Class of Development

Year	Class of development ¹															Total
	1	2	3	4	5	6	7	8	9	10	11	12	13	14	15	
1995	19845	12345	2617	110	6852	8	84	156	204	152	500	58	18	5	1927	44881
%	44.2	27.5	5.8	0.2	15.3	0.0	0.2	0.3	0.5	0.3	1.1	0.1	0.0	0.0	4.3	100.0
1996	23237	13950	2184	230	7524	12	51	182	213	161	632	109	11	4	1931	50431
%	46.08	27.66	4.33	0.46	14.92	0.02	0.10	0.36	0.42	0.32	1.25	0.22	0.02	0.01	3.83	100.0
1997	27 642	14 826	1 564	120	8 503	8	58	163	201	163	652	103	34	14	2 160	56 649
%	48.8	26.2	2.8	0.2	15.0	0.0	0.1	0.3	0.4	0.3	1.2	0.2	0.1	0.0	3.8	100.0
1998	35 832	16 618	1 178	219	9 076	8	88	163	229	163	564	131	92	10	2 324	66 557
%	53.8	25.0	1.8	0.3	13.6	0.0	0.1	0.2	0.3	0.2	0.9	0.2	0.1	0.0	3.5	100.0

Table 18A: Planning Applications by Class of Development

Year	Class of development ²											Total
	1	2	3	4	5	6	7	8	9	10	11	
1992	18023	11193	1923	6960	73	196	137	178	697	55	1783	41218
%	43.7	27.2	4.7	16.9	0.2	0.5	0.3	0.4	1.7	0.1	4.2	100.0
1993	17469	10662	1733	6122	64	183	110	138	759	56	1559	38855
%	45.0	27.4	4.5	15.8	0.2	0.5	0.3	0.4	1.9	0.1	4.0	100.0
1994	19010	11676	2280	6237	159	175	97	138	668	52	1512	42011
%	45.3	27.8	5.4	14.9	0.4	0.4	0.2	0.3	1.6	0.1	3.6	100.0

- Notes: 1. As defined in Local Government (Planning and Development) Regulations, 1994. A small number of authorities did not provide a breakdown into fee classes. Consequently the total (see text in introduction) will not be equal to the sum of the fee classes.
2. As defined in Local Government (Planning and Development) (Fees) Regulations, 1984

Table 19: Applications by Area and Class of Development 1998

Area	Class 1	Class 2	Class 3	Class 4	Class 5	Class 6	Class 7	Class 8
Carlow	401	141	15	2	72	0	0	2
Cavan	789	301	54	1	127	1	9	1
Clare	1 468	398	66	0	229	0	7	5
Cork	3 644	1555	124	28	775	1	18	14
Donegal	2 608	548	21	2	285	3	6	9
Dun Laoghaire/Rathdown	406	1 310	1	0	330	1	0	3
Fingal	764	783	18	6	379	0	2	13
Galway	3 564	610	71	1	454	0	2	4
Kerry	2 460	549	62	0	386	0	5	8
Kildare	1 266	697	36	17	390	1	3	5
Kilkenny	834	379	62	1	182	0	1	2
Laois	710	230	29	0	146	0	0	1
Leitrim	473	158	20	0	68	0	0	0
Limerick	1 189	495	61	5	239	0	4	3
Longford	366	107	32	0	53	0	0	1
Louth	862	539	21	4	285	1	6	0
Mayo	2 278	375	29	89	279	0	4	3
Meath	1 177	719	67	36	321	0	8	2
Monaghan	569	172	53	5	151	0	0	1
Offaly	825	254	13	0	100	0	1	0
Roscommon	771	264	31	0	129	0	0	4
Sligo	621	267	23	0	153	0	2	1
South Dublin	371	732	0	2	371	0	2	14
Tipperary NR	768	252	43	5	148	0	0	3
Tipperary SR	685	233	75	0	181	0	0	6
Waterford	733	343	34	5	126	0	1	11
Westmeath	870	342	31	0	173	0	0	0
Wexford	2 013	581	63	4	315	0	3	5
Wicklow	1 047	627	21	6	315	0	4	7
Sub-total	34 532	13 961	1 176	219	7 162	8	88	128
Cork	191	391	0	0	239	0	0	4
Dublin	646	1 569	0	0	1 185	0	0	22
Galway	261	380	2	0	236	0	0	9
Limerick	89	199	0	0	76	0	0	0
Waterford	113	118	0	0	124	0	0	0
Sub-total	1 300	2 657	2	0	1 914	0	0	35
Total	35 832	16 618	1 178	219	9 076	8	88	163

Table 19: Applications by Area and Class of Development (Continued)

Area	Class 9	Class 10	Class 11	Class 12	Class 13	Class 14	Class 15	Total
Carlow	1	0	2	8	1	0	10	655
Cavan	19	2	14	4	0	0	33	1 355
Clare	3	6	4	5	1	0	118	2 310
Cork	48	16	32	3	3	3	253	6 517
Donegal	1	31	16	2	1	1	65	3 603
Dun Laoghaire/Rathdown	7	0	24	0	2	0	58	2 142
Fingal	15	2	31	10	2	2	51	2 078
Galway	2	10	5	1	0	0	128	4 852
Kerry	23	8	11	2	0	0	119	3 633
Kildare	4	5	33	17	61	0	110	2 527
Kilkenny	14	3	12	6	3	1	49	1 549
Laois	0	5	1	0	0	0	12	1 134
Leitrim	0	0	0	0	0	0	0	719
Limerick	21	3	9	0	0	0	64	2 093
Longford	0	0	0	4	0	0	35	598
Louth	4	4	6	2	0	0	79	1 813
Mayo	0	3	12	8	0	0	31	3 111
Meath	9	4	5	7	1	0	97	2 453
Monaghan	3	20	12	6	3	0	48	1 043
Offaly	2	4	4	4	2	0	57	1 266
Roscommon	0	2	0	0	3	0	45	1 249
Sligo	1	1	2	0	0	0	66	1 137
South Dublin	12	0	44	2	1	0	77	1 628
Tipperary NR	5	3	3	1	0	1	49	1 281
Tipperary SR	2	2	13	6	0	0	31	1 204
Waterford	1	1	4	16	0	0	27	1 302
Westmeath	0	6	6	0	0	0	87	1 515
Wexford	7	1	17	2	4	2	42	3 059
Wicklow	4	4	34	8	4	0	64	2 145
Sub-total	208	146	356	124	92	10	1 905	59 971
Cork	1	8	18	3	0	0	42	951
Dublin	17	0	135	0	0	0	239	3 813
Galway	3	2	30	1	0	0	38	962
Limerick	0	4	18	3	0	0	53	442
Waterford	0	3	7	0	0	0	47	412
Sub-total	21	17	208	7	0	0	419	6580
Total	229	163	564	131	92	10	2 324	66 551

Tables 20 and 21

Tables 20 and 21 list the total amount of development contributions which planning authorities receive through the procedure of levying charges in planning conditions (Section 26(2)(g) and (h) of the 1963 Act).

The amount received in contributions has continued to rise since 1987 with an exceptional decline of approximately 2.5 per cent between 1992 and 1993. There was an increase of approximately 26% for 1997 and a further increase of almost 15% in 1998. Increases or decreases in the figures, may be the result of a number of factors such as changes in the rates charged, size and type of developments carried out in a particular year, the overall level of implementation of planning permissions and perhaps increased enforcement of planning conditions.

Table 20: Development Contributions

Year	Total Sum Received £
1987	5 181 562
1988	6 450 699
1989	9 016 987
1990	10 690 887
1991	12 348 630
1992	15 895 196
1993	15 483 241
1994	20 544 507
1995	22 398 667
1996	36 179 998
1997	45 531 558
1998	52 236 043

Table 21: Development Contributions by Area

Area	Contributions	
	1997	1998
Carlow	189 070	83 684
Cavan	130 522	377 913
Clare	534 980	792 011
Cork	3 545 595	4 359 083
Donegal	666 526	775 759
Dun Laoghaire/Rathdown	1 614 411	1 949 762
Fingal	4 497 763	6 667 806
Galway	762 620	304 135
Kerry	1 068 446	1 187 994
Kildare	7 004 855	5 886 787
Kilkenny	334 167	697 754
Laois	236 288	337 710
Leitrim	71 850	46 250
Limerick	428 591	765 074
Longford	141 263	48 491
Louth	592 735	1 470 243
Mayo	271 089	551 334
Meath	1 615 943	2 532 673
Monaghan	22 410	67 710
Offaly	282 189	360 093
Roscommon	203 770	344 755
Sligo	298 624	85 270
South Dublin	6 600 000	6 300 000
Tipperary NR	1 523 146	385 897
Tipperary SR	540 369	451 897
Waterford	315 619	454 775
Westmeath	606 880	1 021 340
Wexford	345 654	1 135 357
Wicklow	1 848 533	1 848 019
Sub-total	36 293 908	41 289 576
Cork	603 442	924 813
Dublin	5 230 218	6 022 167
Galway	1 753 609	2 117 787
Limerick	664 435	996 362
Waterford	985 946	885 338
Sub-total	9 237 650	10 946 467
Total	45 531 558	52 236 043

II Enforcement

Tables 22, 23, 24 and 24A

These tables give information on the number of enforcement cases under three principal procedures:

- Prosecution under Section 24 of the 1963 Act (as amended);
- Serving of an Enforcement Notice under Sections 31 and 35 as well as Sections 32, 36 and 37 of the 1963 Act;
- Serving of a Warning Notice under Section 26 of the 1976 Act (as amended).

Where S24 of the 1963 Act and S26 of the 1976 Act (both as amended) are concerned, convictions include both summary prosecution and prosecution on indictment. 'Cases initiated' under these sections include only those cases where legal proceedings have been brought, whereas under the other sections (i.e. enforcement notice) such cases refer to the number of notices that have been issued, not all of which would have necessitated further action in the courts.

Table 24A gives the figures for compliance with these notices and for which therefore no further action was required. This is the third year for which this information has been collected. As the issuing of the notice and the compliance with it need not necessarily take place within the same reporting year these tables will be better evaluated in the light of next year's returns.

With the exceptions of 1992 and 1993 the figures for enforcement cases initiated have remained stable as have 'cases convicted' though 1994 shows a drop of over 50 per cent. Enforcement procedures are time consuming and, accordingly, the number of convictions in any one year does not necessarily relate to the number of cases initiated in that year.

Table 22: Enforcement Cases Initiated, by Procedure

Enforcement procedure	1993	1994	1995	1996	1997	1998
S24 1963 Act	38	33	38	40	20	6
S31 1963 Act	907	813	916	948	874	952
S32 1963 Act	3	6	7	4	1	6
S35 1963 Act	36	77	73	55	85	61
S36 1963 Act	0	0	2	0	0	0
S37 1963 Act	0	0	0	2	0	0
S26 1976 Act	401	185	301	379	293	272
Total	1 385	1 114	1 337	1 428	1 273	1 297

Table 23: Enforcement Cases Convicted, by Procedure

Enforcement procedure	1993	1994	1995	1996	1997	1998
S24 1963 Act	13	2	4	10	3	3
S31 1963 Act	110	45	126	221	189	203
S32 1963 Act	0	1	0	1	0	0
S35 1963 Act	2	4	7	9	8	10
S36 1963 Act ¹	-	-	-	-	-	-
S37 1963 Act	0	0	0	2	0	0
S26 1976 Act	42	26	47	28	20	33
Total	167	78	184	271	220	249

Note 1: S36 makes no provision for conviction

Table 24: Enforcement Cases Initiated and Convicted by Area and Procedure in 1998

Area	S24/1963		S26/1976		S31/1963		S32/1963		S35/1963	
	I	C	I	C	I	C	I	C	I	C
Carlow	0	0	0	0	9	1	0	0	0	0
Cavan	0	0	8	1	1	0	0	0	0	0
Clare	0	0	78	0	82	24	0	0	0	0
Cork	0	0	4	1	32	3	0	0	4	1
Donegal	0	0	0	0	54	4	0	0	5	0
Dun Laoghaire/Rathdown	0	0	1	0	50	17	0	0	0	0
Fingal	0	0	14	3	108	47	0	0	1	1
Galway	0	0	23	0	112	20	0	0	1	0
Kerry	0	0	0	0	36	6	0	0	3	0
Kildare	0	0	49	0	79	18	0	0	0	0
Kilkenny	0	0	0	0	4	0	0	0	0	0
Laois	0	0	5	0	25	3	1	0	2	1
Leitrim	0	0	0	0	31	0	0	0	0	0
Limerick	0	0	1	0	0	0	0	0	0	0
Longford	0	0	0	0	0	0	0	0	0	0
Louth	0	0	12	1	13	2	0	0	0	0
Mayo	0	0	0	0	0	0	0	0	0	0
Meath	0	0	2	2	4	2	0	0	0	0
Monaghan	0	0	18	0	4	0	0	0	0	0
Offaly	0	0	0	0	4	0	0	0	1	1
Roscommon	0	0	0	0	0	0	0	0	0	0
Sligo	0	0	6	1	10	1	0	0	1	0
South Dublin	0	0	8	7	51	10	0	0	0	0
Tipperary NR	0	1	0	0	4	0	0	0	2	0
Tipperary SR	2	0	2	0	55	8	5	0	0	0
Waterford	0	0	0	0	10	1	0	0	3	0
Westmeath	0	0	1	0	1	0	0	0	0	0
Wexford	0	0	8	0	12	0	0	0	0	0
Wicklow	0	0	0	0	33	4	0	0	17	2
Sub-total	2	1	240	16	824	171	6	0	40	6
Cork	1	0	1	0	20	5	0	0	0	0
Dublin	0	0	7	1	29	4	0	0	0	1
Galway	2	1	19	15	72	23	0	0	21	3
Limerick	0	0	3	0	2	0	0	0	0	0
Waterford	1	1	2	1	5	0	0	0	0	0
Sub-total	4	2	32	17	128	32	0	0	21	4
Total	6	3	272	33	952	203	6	0	61	10

I = Initiated and C = Convicted

Table 24A: Enforcement Notices - Compliance

Area	S31/1963	S32/1976	S35/1963	S36/1963	S37/1963
Carlow	8	0	0	0	0
Cavan	0	0	0	0	0
Clare	48	0	0	0	0
Cork	8	0	2	0	0
Donegal	12	0	0	0	0
Dun Laoghaire/Rathdown	21	0	0	0	0
Fingal	40	0	0	0	0
Galway	49	0	0	0	0
Kerry	24	0	2	0	0
Kildare	60	0	0	0	0
Kilkenny	3	0	0	0	0
Laois	11	1	0	0	0
Leitrim	0	0	0	0	0
Limerick	0	0	0	0	0
Longford	0	0	0	0	0
Louth	8	0	0	0	0
Mayo	0	0	0	0	0
Meath	0	0	0	0	0
Monaghan	3	0	0	0	0
Offaly	4	0	0	0	0
Roscommon	0	0	0	0	0
Sligo	8	0	1	0	0
South Dublin	40	0	0	0	0
Tipperary NR	0	0	0	0	0
Tipperary SR	30	3	0	0	0
Waterford	9	0	3	0	0
Westmeath	1	0	0	0	0
Wexford	3	0	0	0	0
Wicklow	9	0	13	0	0
Sub-total	399	4	21	0	0
Cork	8	0	0	0	0
Dublin	12	2	2	0	0
Galway	49	0	18	0	0
Limerick	2	0	0	0	0
Waterford	3	0	0	0	0
Sub-total	74	2	20	0	0
Total	473	6	41	0	0

Tables 25A, 25B, 26A and 26B

The fourth principal enforcement procedure is based on the jurisdiction of the High Court and the Circuit Court to grant injunctions where unauthorised development is taking place. Not only the planning authority but any member of the public can make an application to the Court under Section 27 of the 1976 Act (as amended). The use of this procedure has therefore been separated into two categories: initiation by the planning authority and initiation by 'other bodies or individuals.'

As both statistics are based on figures provided by the planning authorities, the second category may be underestimated because the planning authority need not necessarily be aware of applications by third parties.

Table 25A Applications for Injunction Order to High Court S27 1976 Act (as amended)

Year	Applications by Planning Authority		Applications by Others	
	Number of applications	Number granted	Number of applications	Number granted
1993	35	19	5	2
1994	35	15	3	1
1995	66	20	2	2
1996	42	27	2	1
1997	29	17	0	0
1998	51	25	1	0

Table 25B Applications for Injunction Order to Circuit Court

Year	Applications by Planning Authority		Applications by Others	
	Number of applications	Number granted	Number of applications	Number granted
1993	22	9	3	2
1994	30	16	2	2
1995	21	8	0	0
1996	37	17	2	2
1997	37	13	2	2
1998	52	31	2	0

Data on applications to the Circuit Court were collected for 1992 for the first time when there was zero return.

Table 26: Applications for Injunction Order to the High Court S27 1976, by Area

Area	By Planning Authority		Applications by Others	
	Number of applications	Number granted	Number of applications	Number granted
Carlow	0	0	0	0
Cavan	0	0	0	0
Clare	0	0	0	0
Cork	0	0	0	0
Donegal	0	1	0	0
Dun Laoghaire/Rathdown	2	2	0	0
Fingal	23	7	0	0
Galway	0	0	0	0
Kerry	1	1	0	0
Kildare	1	1	0	0
Kilkenny	0	0	0	0
Laois	0	0	0	0
Leitrim	0	0	0	0
Limerick	0	0	0	0
Longford	0	0	0	0
Louth	1	1	0	0
Mayo	0	0	0	0
Meath	5	3	1	0
Monaghan	1	0	0	0
Offaly	1	1	0	0
Roscommon	0	0	0	0
Sligo	1	0	0	0
South Dublin	4	3	0	0
Tipperary NR	0	0	0	0
Tipperary SR	0	0	0	0
Waterford	0	0	0	0
Westmeath	0	0	0	0
Wexford	0	0	0	0
Wicklow	3	1	0	0
Sub-total	43	21	1	0
Cork CB	0	0	0	0
Dublin CB	8	4	0	0
Galway CB	0	0	0	0
Limerick CB	0	0	0	0
Waterford CB	0	0	0	0
Sub-total	8	4	0	0
Total	51	25	1	0

Table 26A: Applications for Injunction Order to the Circuit Court

Area	By Planning Authority		Applications by Others	
	Number of applications	Number granted	Number of applications	Number granted
Carlow	1	1	0	0
Cavan	0	0	0	0
Clare	0	0	0	0
Cork	1	1	1	0
Donegal	15	5	0	0
Dun Laoghaire/Rathdown	0	0	0	0
Fingal	0	0	0	0
Galway	1	1	0	0
Kerry	2	2	1	0
Kildare	2	0	0	0
Kilkenny	0	0	0	0
Laois	0	0	0	0
Leitrim	0	0	0	0
Limerick	5	5	0	0
Longford	0	0	0	0
Louth	2	2	0	0
Mayo	1	1	0	0
Meath	0	0	0	0
Monaghan	6	4	0	0
Offaly	0	0	0	0
Roscommon	0	0	0	0
Sligo	6	0	0	0
South Dublin	0	0	0	0
Tipperary NR	0	0	0	0
Tipperary SR	0	0	0	0
Waterford	0	0	0	0
Westmeath	1	1	0	0
Wexford	0	0	0	0
Wicklow	1	0	0	0
Sub-total	44	23	2	0
Cork CB	0	0	0	0
Dublin CB	0	0	0	0
Galway CB	8	8	0	0
Limerick CB	0	0	0	0
Waterford CB	0	0	0	0
Sub-total	8	8	0	0
Total	52	31	2	0

III Fees and Administration

Tables 27, 28, 29, 30 and 31

The changes in fee class classification are noted in the introduction to Tables 18 and 19. Table 28 is retained as a reference point. Tables 27, 28 and 29 deal with planning application fees. The total sum received from planning application fees decreased in the years 1991 to 1993. In subsequent years increases were partially explained by the increase in fees in the 1994 Regulations. This year's increase of 35% is mostly attributable to the increase in the number of applications.

As in previous years, planning fees for Class 5 applications (previously class 4) continued to be quite high. Though

amounting to only fourteen per cent of all applications, class 5 continues to account for almost sixty per cent of fees.

Table 29 gives a detailed account of the fees received in each area specified by class of development (see Appendix A for the type of land use in each class). Tables 30 and 31 give the fees received under a number of other categories.

Table 27: Total Amount Received in Application Fees by Class of Development - with Percentage Breakdown*

1998	£s	Percentage	1998	£s	Percentage
Class 1	5 530 014	28.5	Class 9	88 702	0.5
Class 2	531 920	2.7	Class 10	58 730	0.3
Class 3	154 390	0.8	Class 11	119 754	0.6
Class 4	131 433	0.7	Class 12	17 153	0.1
Class 5	11 806 166	60.8	Class 13	23 871	0.1
Class 6	1 103	0.0	Class 14	2 096	0.0
Class 7	141 404	0.7	Class 15	635 555	3.3
Class 8	114 923	0.6			
Total				19 433 307	100

* The sum of the class fees is not equivalent to the total as a breakdown by class was not provided by Youghal UDC (£75,823).

Table 28: Total Amount Received in Application Fees by Class of Development

Class of Development	1990	1991	1992	1993	1994	1995
2	203 059	198 640	195 820	186 218	287 037	-
3	190 260	142 339	130 497	128 000	350 963	-
4	4 458 479	4 066 744	3 603 220	3 171 997	4 734 465	-
5	61 648	58 866	65 393	45 691	80 429	-
6	31 696	38 965	33 775	33 474	34 133	-
7	24 815	33 742	25 855	19 728	30 716	-
8	17 370	17 003	26 660	23 575	34 191	-
9	66 879	61 601	58 338	71 056	80 411	-
10	4 197	2 688	5 252	6 645	5 698	-
11	154 224	159 827	131 268	173 295	221 090	-
Total	6 803 274	6 109 980	5 695 338	5 336 469	8 120 165	9 697 489

Table 29: Amount Received in Application Fees by Area and Class of Development

Area	Class 1	Class 2	Class 3	Class 4	Class 5	Class 6	Class 7	Class 8
Carlow	50 060	4 674	1 461	531	72 858	0	0	1 534
Cavan	94 956	8 407	9 598	3 328	122 289	374	6 911	168
Clare	218 755	15 292	7 364	0	284 674	0	926	16 374
Cork	389 276	38 556	8 912	941	884 704	0	10 986	1 361
Donegal	255 336	17 861	2 255	685	415 927	459	400	468
Dun Laoghaire/Rathdown	123 577	32 836	58	0	415 420	52	0	10 123
Fingal	351 956	31 020	6 029	458	867 737	0	12 285	5 021
Galway	310 677	21 657	6 498	78	372 130	0	754	366
Kerry	1204 008	18 287	6 603	0	353 930	0	16 959	2 447
Kildare	369 440	35 664	5 300	0	527 890	0	1259	266
Kilkenny	138 073	10 324	7 141	58	215 460	0	650	10 195
Laois	110 811	9 191	11 117	0	106 262	0	0	58
Leitrim	41 128	5 278	1 144	0	132 345	0	0	0
Limerick	150 674	14 584	7 472	575	354 735	0	5 673	459
Longford	30 301	6 939	2 693	0	33 341	0	0	42
Louth	173 868	17 973	4 336	112 666	315 794	218	14 587	1 395
Mayo	1255 749	12 256	4 589	232	431 729	0	4 565	449
Meath	349 513	24 636	8 010	3 658	445 846	0	33 133	1 582
Monaghan	50 539	5 745	8 436	0	166 253	0	0	167
Offaly	85 283	7 764	2 268	0	126 230	0	364	0
Roscommon	61 881	8 353	3 053	0	87 955	0	0	469
Sligo	69 922	8 239	3 640	0	216 776	0	1592	414
South Dublin	172 100	18 082	0	172	837 374	0	8 621	3 112
Tipperary NR	77 885	7 736	4 345	449	121 897	0	0	1 324
Tipperary SR	79 557	7 383	13 520	0	96 675	0	0	2 732
Waterford	77 153	9 510	3 771	888	74 371	0	1 345	1 837
Westmeath	1165 927	9 316	4 050	0	200 980	0	0	0
Wexford	263 993	20 417	8 402	4 028	400 448	0	2 559	2 940
Wicklow	192 083	18 798	2 068	2 360	520 214	0	8 017	9 778
Sub-total	4 991 4481	446778	154 193	131 107	9 202 244	1 103	141 072	76 074
Cork	87 111	17 519	0	0	310 193	0	0	1 030
Dublin	322 168	40 462	0	326	1 514 587	0	332	4 156
Galway	119 304	16 527	197	0	455 153	0	0	33 663
Limerick	40 678	7 724	0	0	137 627	0	0	0
Waterford	46 272	2 910	0	0	186 362	0	0	0
Sub-total	615 533	85 142	197	326	2 603 922	0	332	38 849
Total	5 530 014	531 920	154 390	131 43311	806 166	1 103	141 404	114 923

Table 29: Amount Received in Application Fees by Area and Class of Development (Contd)

Area	Class 9	Class 10	Class 11	Class 12	Class 13	Class 14	Class 15	Fees Total
Carlow	146	0	559	984	1 407	0	102	134 316
Cavan	3 487	1 568	759	772	0	0	1 947	254 564
Clare	2 682	4 405	897	380	52	0	104 003	655 804
Cork	21 339	1 497	2 798	371	823	886	24 974	1 463 247
Donegal	52	1 984	487	104	52	52	6 581	710 961
Dun Laoghaire/Rathdown	1 417	0	6 648	0	235	0	9 048	599 414
Fingal	2 158	920	12 185	772	1 160	525	12 264	1 304 490
Galway	747	3 832	448	146	0	0	33 279	750 612
Kerry	3 695	5 092	1 933	608	0	0	43 569	657 131
Kildare	2 833	1 243	3 001	1 397	990	0	31 809	991 571
Kilkenny	2 615	1 679	1 202	509	2 984	130	15 447	406 467
Laois	236	1 617	52	0	0	0	22 407	261 811
Leitrim	0	0	0	0	0	0	0	179 895
Limerick	17 817	1 510	2 167	0	0	0	8 810	564 476
Longford	0	0	0	344	0	0	4 792	78 452
Louth	2 371	1 270	1 134	110	0	0	24 282	670 004
Mayo	2 108	554	874	746	0	0	9 894	723 745
Meath	1 224	1 687	2 159	670	3 119	0	16 846	892 083
Monaghan	0	4 797	2 897	543	2 319	0	8 709	250 405
Offaly	1 151	584	1 592	857	874	0	18 789	245 756
Roscommon	0	2 257	0	0	1 713	0	9 512	175 193
Sligo	52	627	82	0	0	0	27 170	328 514
South Dublin	1 510	0	22 810	110	200	0	9 184	1 073 275
Tipperary NR	787	974	372	182	0	146	6 021	222 118
Tipperary SR	4 718	1 053	1 477	1 462	58	0	11 214	219 849
Waterford	280	290	689	1 666	0	0	8 775	180 575
Westmeath	0	3 434	2 201	0	0	0	12 460	398 368
Wexford	1 172	1 215	4 488	125	4 526	357	10 050	724 720
Wicklow	790	3 327	2 210	2 305	3 359	0	35 404	800 713
Sub-total	75 387	47 416	76 481	15 163	23 871	2 096	535 240	15 918 529
Cork	219	8 302	5 520	1 185	0	0	8 757	439 836
Dublin	4 618	276	26 739	0	0	0	33 777	1 947 441
Galway	8 478	483	6 922	146	0	0	8 483	649 356
Limerick	0	728	2 613	659	0	0	44 010	234 039
Waterford	0	1 525	1 479	0	0	0	5 288	243 836
Sub-total	13 315	11 314	43 273	1 990	0	0	100 315	3 514 508
Total	88 702	58 730	119 754	17 153	23 871	2 096	635 555	19 433 037

Table 30: Fees Received Other than Application Fees by Area and by Type of Fee¹

Area	Extension	Register	Licence	Exemption	Compliance	Miscellaneous	Total
Carlow	0	0	0	0	0	33 790	3 790
Cavan	130	614	1 693	0	0	2 944	5 381
Clare	0	2 377	1 652	0	0	4 352	8 381
Cork	744	23 560	13 953	2 740	75	8 033	49 105
Donegal	557	0	557	0	0	16 682	17 795
Dun Laoghaire/Rathdown	295	8 577	0	0	200	21 895	30 967
Fingal	0	2 314	0	0	1 945	22 651	26 910
Galway	135	3 010	1 608	0	0	15 864	20 617
Kerry	0	0	568	0	983	17 365	18 916
Kildare	120	229	240	0	2 010	14 680	17 279
Kilkenny	0	0	0	0	0	628	628
Laois	165	0	1 267	0	0	8 731	10 163
Leitrim	0	781	366	0	0	2 115	3 262
Limerick	130	3 116	1 472	394	11 402	7 599	24 113
Longford	0	0	0	0	0	6 508	6 508
Louth	120	0	267	0	0	24 183	24 570
Mayo	180	2 900	723	0	200	3 773	7 776
Meath	535	1 214	1 668	440	2 745	21 323	27 925
Monaghan	0	817	3 182	0	1 320	3 611	8 930
Offaly	0	0	50	0	0	1 938	1 988
Roscommon	0	0	1 244	0	2 167	5 502	8 913
Sligo	80	0	1 365	20	1 328	3 590	6 383
South Dublin	90	4 694	0	0	0	3 294	8 078
Tipperary NR	90	1 737	2 464	10	2 517	889	7 707
Tipperary SR	0	755	2 554	40	2 031	2 948	8 328
Waterford	0	2 190	6 278	0	801	1 584	10 853
Westmeath	120	0	1 698	0	3 345	9 033	14 196
Wexford	0	0	32	130	0	18 551	18 713
Wicklow	90	100	155	160	310	21 242	22 057
Sub-total	3 581	58 985	45 055	3 934	33 379	305 298	420 232
Cork	80	0	906	0	0	9 363	10 349
Dublin	745	11 012	90 400	0	0	9 867	112 024
Galway	85	0	1 030	0	0	14 089	15 204
Limerick	0	0	135	0	4 910	2 374	7 419
Waterford	80	1 554	40	0	2 340	1 610	5 624
Sub-total	990	12 566	92 511	0	7 250	37 303	150 620
Totals	4 571	71 551	137 566	3 934	40 629	342 601	570 852

Note 1: The categories of Fees and Income are:

Extension and further extension application fees (Local Government (Planning and Development) Regulations, 1994) Sixth Schedule
Register fees (Local Government Planning and Development) Regulations, 1994) Sixth Schedule

Licence fees (S.89, 1963 Act) (Local Government Planning and Development) Regulations, 1994) Seventh Schedule

Fees for letters or certificates that development is exempt

Fees for letters or certificates that conditions/permission complied with, etc.

Miscellaneous - e.g. copies of documents, etc.

Table 31: Total Amount Received in Fees by Type of Fee

Type of fee	1993	1994	1995	1996	1997	1998
Application fees, gross	5 336 469	8 120 165	9 697 489	11 928 216	13 561 467	19 433 307
Application fees, refunds	- 136 199	- 200 715	- 123 077	- 270 071	- 301 134	- 312 478
Application fees, net	5 200 270	7 919 450	9 574 412	11 658 145	13 260 333	19 120 829
Other fees total	289 510	331 132	521 781	408 668	471 246	570 852
Total	5 489 780	8 250 582	10 096 193	12 066 813	13 731 579	19 691 681

Tables 32, 33, 34 and 35

Tables 32 and 34 give a breakdown of staff by full/part time and technical/ administrative. The category 'part time' includes part time employees as well as full time employees who are involved in planning work for only part of their time. The total staff complement has been calculated as the sum of technical and administrative staff. Technical staff include fire officers, health officers, etc., who are for part of their time involved with planning control duties.

Just over two-thirds of staff involved in planning in the local authorities are full time.. Reporting on the category "part-time" has been uneven and the category may not be correctly interpreted by all authorities.

Tables 33 and 35 give the costs involved in operating the planning control procedures. Costs are estimated in two ways. The first category deals with costs as given under Programme Group 4 (Planning and Development) of the annual estimates, while the second column gives an estimate of planning control costs as estimated by the planning authority. These are calculated by excluding costs of development plans, other development and promotion and industrial development from Programme Group 4, while adding staff costs from Programme Group 8 (Miscellaneous) which relate to planning control.

However, these figures can be treated in some instances only as estimates of staff numbers and costs. In comparing figures with previous years it must be taken into account that data are not always available for all authorities and that differences in interpretation continue to occur.

Table 32: Staff

Year	Full-time	Part-time	Technical	Administrative	Total
1990	672	415	603	484	1 087
1991	687	422	617	492	1 109
1992	695	421	617	499	1 116
1993	706	367	601	472	1 073
1994	694	357	573	478	1 051
1995	696	337	545	488	1 033
1996	711	336	537	510	1 047
1997	759	355	579	535	1 114
1998	810	304	589	525	1114

Note 1: The total staff complement has been calculated as the sum of technical and administrative staff. Small discrepancies with full time/part time staff data may occur.

Table 33: Costs of Planning Control

Year	Costs of Programme 4 £s	Costs of Planning Control £s
1992	31 583 768	16 795 877
1993	22 278 976	15 599 945
1994	33 518 017	19 497 809
1995	35 633 676	19 699 031
1996	33 334 066	19 894 749
1997	36 421 137	22 216 064
1998	38 273 724	25 896 743

Table 34: Staff by Area

Area	Technical		Administrative		Total
	Full time	Part time	Full time	Part time	
Carlow	1	8	2	2	13
Cavan	4	14	6	3	27
Clare	9	7	17	2	35
Cork	18	12	42	11	83
Donegal	13	19	19	3	54
Dun Laoghaire/Rathdown	25	0	38	0	63
Fingal	24	0	37	0	61
Galway	14	11	18	2	45
Kerry	10	6	12	3	31
Kildare	13	17	12	3	45
Kilkenny	1	1	0	3	5
Laois	4	0	6	0	10
Leitrim	2	6	3	1	12
Limerick	11	2	10	0	23
Longford	1	9	1	3	14
Louth	11	9	8	5	33
Mayo	5	4	8	2	19
Meath	9	1	13	4	27
Monaghan	3	12	5	4	24
Offaly	6	2	8	0	16
Roscommon	3	0	5	1	9
Sligo	6	10	6	3	25
South Dublin	21	8	32	0	61
Tipperary NR	14	4	3	6	27
Tipperary SR	6	7	6	10	29
Waterford	6	1	6	1	14
Westmeath	6	12	5	5	28
Wexford	9	6	9	2	26
Wicklow	15	12	17	5	49
Sub-total	270	200	354	84	908
Cork CB	16	5	10	1	32
Dublin CB	72	0	55	0	127
Galway CB	9	0	9	0	18
Limerick CB	3	9	5	3	20
Waterford CB	4	1	3	1	9
Sub-total	104	15	82	5	206
Total	374	215	436	89	1 114

Table 35: Costs of Planning Control by Area *1

Area	Cost of Programme 4 £s	Cost of Planning Control £s
Carlow	77 897	165 834
Cavan	720 545	452 140
Clare	1 310 119	645 915
Cork	4 573 250	2 037 215
Donegal	1 650 599	995 955
Dun Laoghaire/Rathdown	1 639 000	889 000
Fingal	3 391 000	1 416 000
Galway	8 152	950 372
Kerry	1 145 045	836 079
Kildare	1 605 775	923 363
Kilkenny	20 950	70 070
Laois	618 763	505 109
Leitrim	186 044	190 558
Limerick	1 779 571	858 791
Longford	7 043	153 244
Louth	887 251	1 058 449
Mayo	113 871	71 610
Meath	1 372 581	902 297
Monaghan	264 245	565 800
Offaly	318 693	289 100
Roscommon	446 000	232 000
Sligo	458 208	319 300
South Dublin	2 489 605	2 014 500
Tipperary NR	363 784	462 466
Tipperary SR	349 326	470 442
Waterford	371 745	347 900
Westmeath	304 177	455 953
Wexford	661 100	884 586
Wicklow	665 014	840 239
Sub-total	27 799 353	20 004 287
Cork CB	1 551 000	950 500
Dublin CB	8 136 000	3 928 500
Galway CB	373 770	476 099
Limerick CB	250 400	322 400
Waterford CB	163 211	214 957
Sub-total	10 474 381	5 892 456
Total	38 273 734	25 896 743

IV Other

Tables 36, 37, and 38

The Local Government (Planning and Development) Act 1990, which consolidated and amended the law on planning compensation, took effect from June 10, 1990. Up to 1994 data on compensation were provided in two tables to take account of claims lodged under 1963 legislation. All new claims are now made under 1990 legislation. Table 36 provides a summary from the year 1990 onwards and gives additional information on the number and cost of claims which were 'otherwise disposed of'. Five notices were served under Section 29 of 1963 (Obligation to purchase land) were reported.

Apart from the year 1990 when claims to the value of £41m were lodged, the amount of claims from 1987 to 1992 was between £9m and £11m. The 1993 figure, in excess of £1.3m, represented an 85 per cent decrease over the previous year and the amount claimed in 1994, £0.33m, represented a further decrease of 76 per cent. The figure for 1995 was £0.77m. There were no claims in 1996 and the five claims registered in 1997 were all disposed of. The small number of claims made no longer justifies a table by 'Area'. The authorities against which claims were made are counties Fingal, Kildare, Mayo, Roscommon and Wicklow. The claims lodged against County Wicklow (3), and subsequently 'disposed of', amounted to £5,800,000. County Fingal also has 3 outstanding claims amounting to £3.7m.

Table 36: Claims for Compensation ¹

Year	No	Claims	Number paid	Amount	No	'Disposed'
		Amount £s		paid £s		Value £s
1990	23	41 035 394	3	80 000	15	12 496 900
1991	22	11 162 505	3	25 000	11	6 966 985
1992	9	9 053 348	2	34 000	9	3 356 000
1993	6	1 363 000	5	171 700	8	2 051 000
1994	5	325 070	2	12 000	5	476 000
1995	4	774 500	0	0	1	11 500
1996	0	0	1	26 215	0	0
1997	5	2 320 000	0	0	5	2 320 000
1998	7	10 080 000	0	0	3	5 800 000

¹ Local Government (Planning and Development) Act, 1990 only.

Table 37: Serving of Notices under S29 of the 1963 Planning Act (obligation to purchase land)

Year	Number of notices	Decisions to comply		Cost £
		Planning Authority	An Bord Pleanála	
1992	1	1	1	500 000
1993	3	2	0	16 000
1994	4	0	1	N/A
1995	5	1	1	N/A
1996	4	0	0	N/A
1997	2	1	0	N/A
1998	0	0	0	0

Tables 38, 39, 40, 41, 42, 43 and 44

Table 38 gives the number of agreements made under S38 of the 1963 Planning Act. These are formal agreements (covenants) between the planning authority and the landowner. The use of this provision varies widely between planning authorities.

Table 39 shows the number of Tree Preservation Orders made and in force by the end of the year by area and for the period 1992 to 1996. Figures for Tree Preservation Orders continue to be unreliable. Where discrepancies cannot be otherwise resolved, figures from previous year are used. As no preservation orders appear to have been made in 1998 and none were revoked, the number in force for 1998 has not changed from 1997.

The annual statistics no longer record the number of Environmental Impact statements received by local authorities. These are available in a separate publication "Inventory of Environmental Impact Statements submitted".

The use of S4 of the 1982 Act, which allows an extension of the five-year validity period of a permission where development is under construction, is recorded in Table 42.

Table 42 records the levels of use of various sections of the Planning Acts.

Table 38: Agreements under S38 of the 1963 Planning Act by Area

	1993	1994	1995	1996	1997	1998
Carlow	2	0	4	4	10	35
Cavan	0	0	0	0	0	0
Clare	42	30	20	33	28	27
Cork	38	76	0	196	160	143
Donegal	3	5	7	6	8	22
Dun Laoghaire/Rathdown	-	0	0	1	3	7
Fingal	-	12	21	9	12	0
Galway	50	70	89	170	150	0
Kerry	6	2	3	5	2	0
Kildare	311	150	122	112	115	121
Kilkenny	1	3	2	6	6	0
Laois	4	6	5	7	7	19
Leitrim	0	0	0	0	0	0
Limerick	10	4	3	9	14	8
Longford	0	0	0	0	0	0
Louth	14	13	8	8	0	0
Mayo	0	0	0	0	0	0
Meath	10	14	31	21	30	23
Monaghan	1	0	2	1	1	2
Offaly	6	6	15	7	5	3
Roscommon	0	2	6	12	8	3
Sligo	0	0	0	1	2	13
South Dublin	-	0	0	0	0	0
Tipperary NR	1	0	0	1	5	1
Tipperary SR	1	0	0	0	3	2
Waterford	0	0	0	1	3	4
Westmeath	12	0	20	11	15	19
Wexford	2	0	0	0	1	0
Wicklow	36	85	50	48	67	87
Sub-total	553	487	400	668	655	539
Cork	1	0	0	0	1	0
Dublin	0	0	0	0	0	0
Galway	0	0	0	0	0	0
Limerick	0	0	0	0	0	0
Waterford	0	0	0	0	0	0
Sub-total	1	0	0	0	1	0
Total	554	487	400	668	656	539

Table 39: Tree Preservation Orders by Area

	Number of orders made					No. of orders in force at end of 1998
	1992	1993	1994	1995	1996	
Carlow	0	0	0	1	0	3
Cavan	0	0	0	0	0	0
Clare	0	0	1	0	0	1
Cork	0	0	0	0	0	8
Donegal	0	0	0	0	0	3
Dun Laoghaire/Rathdown	N/A	N/A	0	0	0	8
Fingal	N/A	N/A	0	0	0	3
Galway	0	0	0	0	0	1
Kerry	0	0	0	0	0	0
Kildare	1	0	0	0	0	4
Kilkenny	0	1	0	0	0	5
Laois	0	0	0	0	0	0
Leitrim	0	0	0	0	0	2
Limerick	0	0	0	0	0	2
Longford	0	0	0	0	0	0
Louth	0	1	0	1	0	4
Mayo	1	1	0	1	0	9
Meath	0	0	0	1	0	5
Monaghan	0	0	0	0	0	1
Offaly	0	0	0	0	0	14
Roscommon	0	0	0	0	0	3
Sligo	0	0	0	0	0	0
South Dublin	N/A	N/A	0	0	0	3
Tipperary NR	0	1	0	0	0	3
Tipperary SR	0	0	0	2	0	6
Waterford	0	1	0	0	0	24
Westmeath	0	0	0	0	0	17
Wexford	0	0	0	0	0	1
Wicklow	0	0	2	0	0	48
Sub-total	3	5	3	6	0	178
Cork Co.Bor.	0	0	0	0	0	11
Dublin Co.Bor.	0	0	1	0	0	2
Galway Co.Bor.	0	0	0	0	0	0
Limerick Co.Bor.	0	0	0	0	0	3
Waterford Co.Bor.	0	0	0	0	0	2
Sub-total	0	0	1	0	0	18
Total	3	5	4	6	0	196

Table 40: Extension of Duration of Permission for Substantially Completed Development (S4 1982 Act)

Year	Applied	Extensions Granted	Refused
1992	92	67	20
1993	96	74	16
1994	124	98	12
1995	142	112	19
1996	152	113	28
1997	134	106	20
1998	112	79	20

Table 41: S89 Licence Applications

Area	Applications	Granted	Refused
Carlow	1	1	0
Cavan	29	29	0
Clare	28	8	1
Cork	355	327	28
Donegal	27	27	0
Dun Laoghaire/Rathdown	0	0	0
Fingal	0	0	0
Galway	5	5	0
Kerry	8	0	0
Kildare	12	12	0
Kilkenny	0	0	0
Laois	4	1	0
Leitrim	2	1	0
Limerick	27	10	10
Longford	0	0	0
Louth	11	11	0
Mayo	0	0	0
Meath	11	11	0
Monaghan	7	7	0
Offaly	0	0	0
Roscommon	18	18	0
Sligo	5	1	1
South Dublin	0	0	0
Tipperary NR	26	17	7
Tipperary SR	179	179	0
Waterford	260	256	4
Westmeath	29	25	4
Wexford	11	11	0
Wicklow	31	10	3
Sub-total	1 086	967	58
Cork	53	29	14
Dublin	251	249	2
Galway	0	0	0
Limerick	16	16	0
Waterford	2	1	1
Sub-total	322	295	17
Total	1 408	1 262	75

Table 42: Use of Miscellaneous Sections of the 1963 Planning Act

Section ¹	1993	1994	1995	1996	1997	1998
S30 1963 Act	1	0	0	0	10	0
S44 1963 Act	0	0	0	0	0	0
S47 1963 Act	0	1	1	0	0	0
S48 1963 Act	0	0	1	0	0	0
S54 1963 Act	1	0	0	0	0	1
S76 1963 Act	9	18	16	5	6	0
S85 1963 Act	22	27	45	67	44	36

Note 1: The titles of these sections are listed in Appendix B

Table 43:

Under S19 of the 1963 Planning Act each planning authority must make a development plan for its area and this plan must be reviewed at least once in every five years. In Table 43, the year in which the most recent development plan was adopted is given for each planning authority. This table takes account of the situation up to the end of 1998, and draft plans have not been included.

Table 43: Development Plans by Planning Authority¹

Planning	Date Adopted	Date Review Due
<i>County Councils</i>		
Carlow	1997	2002
Cavan	1996	2001
Clare	1988	1993
Cork	1996	2001
Donegal & Rosnowlagh	1988	1993
- Ballyshannon	1997	2002
- Ballybofey	1996	2001
- Carndonagh	1994	1999
- Donegal town	1993	1998
- Killybegs	1993	1998
- Moville	1994	1999
Dublin	1993	N/A
Dun Laoghaire-Rathdown	1998	2003
Fingal	1999	2004
Galway	1997	2002
Kerry	1996	2001
Kildare	1999	2004
Kilkenny	1994	1999
Laois	1991	1996
Leitrim	1997	2002
Limerick	1999	2004
Longford	1997	2002
Louth	1997	2002
Mayo	1992	1997
Meath	1994	1999
Monaghan	1999	2004
Offaly	1996	2001
Roscommon	1993	1998
Sligo	1985	1990
South Dublin	1998	2003
Tipperary (NR)	1998	2003
Tipperary (SR)	1996	2001
- Cahir	1994	1999
- Fethard	1994	1999
Waterford	1999	2004
Westmeath	1994	1999
- Moate	1994	1999
- Mullingar	1994	1999
Wexford	1993	1998
Wicklow	1999	2004

Table 43: Development Plans by Planning Authority¹ (contd.)

Planning	Date Adopted	Date Review Due
<i>County Borough Corporations</i>		
Cork	1998	2003
Dublin	1999	2004
Limerick	1998	2003
Waterford	1994	1999
Galway	1999	2004
<i>Borough Corporations</i>		
Clonmel	1993	1998
Drogheda	1999	2004
Dun Laoghaire	1998	2003
Kilkenny	1994	1999
Sligo	1992	1997
Wexford	1993	1998
Galway Development Plan for Scheduled Towns of Athenry, Clifden, Gort and Tuam	1992	1997
Loughrea	1993	1998
<i>Urban District Councils</i>		
Arklow	1991	1996
Athlone	1990	1995
Athy	1990	1995
Ballina	1992	1997
Ballinasloe	1995	2000
Birr	1988	1993
Bray	1999	2004
Buncrana	1993	1998
Bundoran	1998	2003
Carlow	1998	2003
Carrickmacross	1993	1998
Carrick-on-Suir	1994	1999
Cashel	1995	2000
Castlebar	1991	1996
Castleblayney	1992	1997
Cavan	1996	2001
Ceannannus Mor	1994	1999
Clonakilty	1998	2003
Clones	1992	1997
Cobh	1993	1998
Dundalk	1996	2001
Dungarvan	1994	1999
Ennis	1992	1997
Enniscorthy	1992	1997
Fermoy	1998	2003
Killarney	1995	2000
Kilrush	1994	1999
Kinsale	1998	2003

Table 43: Development Plans by Planning Authority¹ (contd.)

Planning	Date Adopted	Date Review Due
Letterkenny	1993	1998
Listowel	1998	2003
Longford	1997	2002
Macroom	1996	2001
Mallow	1998	2003
Midleton	1998	2003
Monaghan	1993	1998
Naas	1999	2004
Navan	1996	2001
Nenagh	1986	1991
New Ross	1998	2003
Skibbereen	1998	2003
Templemore	1992	1997
Thurles	1993	1998
Tipperary	1994	1999
Tralee	1996	2001
Trim	1998	2003
Tullamore	1998	2003
Westport	1992	1997
Wicklow	1997	2002
Youghal	1997	2002

1 *Source: Department of the Environment
For counties Fingal, Dun Laoghaire/Rathdown (those areas not covered by the existing Borough Council Plan) and South Dublin, the County Dublin Plan adopted in 1993 remains operational until new plans are adopted.*

Appendix A

- Planning Fee Classes of Development

1. Dwellings
2. Domestic extensions etc.
3. Agricultural buildings and structures
4. Buildings or structures for keeping horses, ponies or greyhounds
5. Other buildings (other than 1, 2, 3, 4 - e.g. commercial)
6. Intensive agriculture, afforestation, peat extraction
7. Use of land for mining, quarrying etc, or for dumping
8. Use of land for caravanning etc, parking of vehicles or open storage
9. Provision of plant and machinery, or of storage tank or structures
10. Petrol filling stations
11. Advertisements
12. Electricity lines or overhead telecommunications lines
13. Use of land as a golf course or as a pitch and putt course
14. Use of land as a burial ground
15. Development not coming within any of the foregoing classes

Appendix B

- Miscellaneous Sections of the 1963 Planning Act

-
- S30 Revocation and modification of permission
 - S44 Requiring removal or alteration of hedge
 - S47 Creation of public rights of way pursuant to agreement
 - S48 Compulsory powers for creation of public rights of way
 - S54 Repair and tidying of advertisement structures and advertisements
 - S76 Extinguishment of public rights of way
 - S85 Placing of cables, wires and pipelines by planning authority
 - S89 Applications for various licences

Appendix C:

Enactments and Regulations relating to Physical Planning

Planning and Development Acts

Local Government (Planning and Development) Act, 1963 (No. 28 of 1963)

Local Government (Planning and Development) Act, 1976 (No. 20 of 1976)

Local Government (Planning and Development) Act, 1982 (No. 21 of 1982)

Local Government (Planning and Development) Act, 1983 (No. 28 of 1983)

Local Government (Planning and Development) Act, 1990 (No. 11 of 1990)

Local Government Act, 1991 (Sections 44 and 45) (No. 11 of 1991)

Local Government (Planning and Development) Act, 1992 (No. 14 of 1992)

Local Government (Planning and Development) Act, 1993 (No. 12 of 1993)

Local Government (Planning and Development) Act, 1998 (No. 9 of 1998)

Local Government (Planning and Development) Act, 1999 (No. 17 of 1999)

Planning and Development Regulations

European Communities (Environmental Impact Assessment) Regulations, 1989 (S.I. No. 349 of 1989)

European Communities (Environmental Impact Assessment) (Amendment) Regulations, 1994. (S.I. 84 of 1994)

Local Government (Planning and Development) Regulations, 1994 (S.I. No. 86 of 1994)

Local Government (Planning and Development) Regulations, 1995 (S.I. No. 69 of 1995)

Local Government (Planning and Development) Regulations, 1995 (S.I. No. 75 of 1995)

Local Government (Planning and Development) Regulations, 1996 (S.I. No. 100 of 1996)

Local Government (Planning and Development) Regulations, 1996 (S.I. No. 101 of 1996)

Local Government (Planning and Development) Regulations, 1997 (S.I. No. 78 of 1997)

Local Government (Planning and Development) Regulations, (No.2) 1997 (S.I. No. 121 of 1997)

Local Government (Planning and Development) (No.3) Regulations, 1997 (S.I. No. 261 of 1997)

Local Government (Planning and Development) (Fees) (Amendment) Regulations 1998 (S.I. No. 119 of 1998)

Local Government (Planning and Development) Regulations, 1998 (S.I. No. 124 of 1998)

Local Government (Planning and Development) (fees) (Amendment) (No. 2) Regulations, 1998 (S.I. No. 128 of 1998)

Local Government (Planning and Development) (No. 2) Regulations, 1998 (S.I. No. 194 of 1998)

Local Government (Planning and Development) Regulations, 1999 (S.I. No. 92 of 1999)

Planning and Development General Policy Directives

Local Government (Planning and Development) General Policy Directive, 1982 (S.I. No. 264 of 1982)

Local Government (Planning and Development) General Policy Directive, 1998 (S.I. No. 193 of 1998)

Appendix D: Other Publications

Other publications dealing with planning statistics include:

- Planning Statistics Quarterly, (Department of the Environment)
- Statistical Release - Planning Permissions (Quarterly), Central Statistics Office
- The Development Control System 1989 - A Survey of 1986 Applications and Development based on them in 1989 (with appendix), ERU, 1990
- Inventory of Environmental Impact Statements submitted (Annual publication) Department of the Environment.
- Environment Bulletin (Quarterly), Department of the Environment
- An Bord Pleanála Annual Report